

WEATHER

	Min.	Max.	Precip.
Wednesday, Oct. 1	40	70	0.00
Thursday, Oct. 2	33	54	0.00
Friday, Oct. 3	33	55	0.24
Saturday, Oct. 4	33	58	0.00
Sunday, Oct. 5	33	58	0.00
Monday, Oct. 6	41	71	0.00
Tuesday, Oct. 7	40	70	0.00

The Chelsea Standard

ONE HUNDRED SIXTH YEAR—No. 17

12 Pages This Week

Plus 4-Page Supplement

CHELSEA, MICHIGAN, THURSDAY, OCTOBER 9, 1975

15c per copy

SUBSCRIPTION: \$6.00 PER YEAR

QUOTE

"The defect of equality is that we only desire it with our superiors."
—Henry Beque.

Football Team Rally Downs Brighton, 26-20

Bulldogs met Bulldogs last Friday night for "a heck of a dog fight," according to Chelsea Bulldog Coach Phil Bareis. A fight resulting in a 26-20 victory for the Chelsea Bulldogs. A victory that was not without some strong opposition.

Bareis said that the Brighton team came to play football. "And they showed how they could play, scoring twice before Chelsea could even get into Brighton territory." Brighton's first score came after Chelsea fumbled a pitch-out and Brighton picked up the fumble and ran 26 yards for the score.

Their second touchdown came on a long drive of 70 yards as they moved with big gains. The Brighton Bulldogs scored on a one-yard run.

Bareis said that with the score 12-0, his Bulldogs began to wake up, much to the credit of punter Jim Marshall. Marshall punted 53 yards to Brighton's three; Brighton was then forced to punt and punted for only 19 yards, giving Chelsea a gain of 35 yards. Howard Salver took advantage of the situation and made the TD on a 16-yard run.

At half-time it was Brighton 12, Chelsea, 6.

Chelsea took the lead in the third quarter when Brighton gambled on fourth and one at the mid-field yard line. The defense held, giving the Bulldogs the ball. Chelsea drove with quarterback Randy Guenther going the last yard. Rex Miles made the kick and the Chelsea team led, 13-12.

"Then," Bareis said, "Chelsea came up with the big play when the defense again held, forcing Brighton to punt."

Salver gathered the punt on his 35 to race right behind blocks of Jim Boyer, Rex Miles, Paul Prinsing, Jim Marshall, Leon Brown, Bruce Stubbs and line blockers Joel Sprague, John Collins and Randy Guenther. He raced down the side line for a 65-yard touchdown run. Rex Miles again kicked to bring the score to 20-12. However, the Brighton Bulldogs didn't quit, using the pass, they scored and then passed for the conversion attempt to tie the score, 20-20.

Chelsea kept their poise and behind a fine return by end Joel Sprague, Chelsea started their running drive. The two big plays in this drive were passes, one to Tony Robards for 15 yards and the other to Dave Watson for 18. Finally, Randy Guenther scored from one yard out to give Chelsea a six-point lead.

The defense held Brighton's offense which had gone to the pass. Chelsea took over the ball in Brighton territory and with the aid of a penalty for roughing the punter, outran the clock for the victory.

Chelsea will meet South Lyon tomorrow (Friday) on the Lion's field.

Area Golfers Third in Detroit Tournament

Four area golfers tied for third place at the Detroit Golf Club Pro-Amateur tournament played last Friday in Detroit.

Playing the course was Inverness Country Club pro Carl Hegenauer, president of Inverness Club, Dan Ewald, Art Clemes and Leon Meabon.

"We had a great time," remarked Hegenauer. "The course was beautiful. Lots of trees. I was in them all day."

Hegenauer reported that the tournament was played on a best ball basis. He and his foursome came up with a 63 for the course tying with three other teams for third. Low score for the tournament was 61.

"Leon Meabon played real good golf," Hegenauer said. "I just wish I could have helped him out. He kept us in all day."

As far as the prize money, Hegenauer only knows that his share will be one-twelfth of the purse. "I don't know the amount. We just hope we get a little money to take care of our expenses," he concluded.



LONG-RANGE RECREATION PLANS: Members of the Chelsea Recreation Council met Oct. 1 to discuss long-range plans and goals for the council. Bob Ward (seated right), shows Ann Schaffner, president, some of the long-range proposals the council has

put together. Looking on is Director Holly Porter. Standing, from left, are Martin Tobin, School Board trustee; Bruce Galbraith, Village Council representative; Dave Lukasiak, Dennis Mull, Carol Kvarnberg, and Pat Whitesall, members-at-large.

Recreation Council Adopts Master Plan

The Chelsea Area Recreation Council has completed a 35-page document entitled "A Recreation Plan for Chelsea, Michigan" and submitted it to the Bureau of Outdoor Recreation in Lansing. This plan is the first step in the council's attempt to obtain a federal grant for Chelsea area recreation from Land and Water Conservation funds.

Robert Ward of 15 Chestnut Dr., a recreation council member, is the author of the document which traces recent history, current

status and future projections for recreation in the Chelsea area.

The report lists two major goals for recreation in Chelsea; the addition of a full-time recreation director and the acquisition of additional recreation land. "If the Recreation Council's dream of federal assistance is realized, one or both of these goals can be achieved in the near future," according to Ward.

Additional goals in the report include a senior citizen facility, a teen center and expansion of current activities.

Volunteer Orientation Set at Methodist Home

The Chelsea United Methodist Retirement Home is offering a Volunteer Orientation Program at the Home on Oct. 9, from 10 a.m. to 2:30 p.m., in the Crippen Building. This is an opportunity to learn about the Home and the activities in which volunteers can help to improve the quality of life for the residents.

Under the direction of the new assistant administrator, a number of new programs are planned: a craft workshop, an exercise program, and an afternoon with toddlers and their mothers. In addition to these, the need

is especially great for help with individual friendly visiting, particularly of nursing patients and blind residents. Letter writing, reading, shopping, escorting on walks are some of the things which are especially appreciated. Group programs such as sing-alongs, bingo, tea parties, and outings are other areas in which the need is especially acute.

If you have time, energy, talents and concern for the elderly, come to the get-acquainted meeting Oct. 9. Attendance at the meeting only (Continued on page six)

Electric Rate Hike in Effect

A 44.1 percent rate increase handed down from Consumers Power and scheduled effective Aug. 30, 1975 was suspended for 30 days by members of the Michigan Municipal Rate Payers Association. But now that period is up, remarked Village Administrator Fritz Weber. "We have no choice but to pass on the increase to the individual consumer."

Weber said that a study determining just how much of an increase will be passed on the consumer is now in the works. "As soon as we know you will."

Weber did say, however, that he expects the increase to hover somewhere around 30 percent. The actual increase to the village was stated as around 40 percent.

Back in August when Chelsea along with 11 municipalities, rural electric co-operatives and investor owned utilities were notified by

Consumer's Power of the proposed rate increase the group decided to act. Known as the Michigan Municipal Rate Payers Association, they filed for a delay of the effective date, terming the increase "extreme."

Consumer's Power stated their reasons for the increase as "inadequate wholesale earnings and ongoing inflation." They further stated that "it is apparent that rate relief is required to permit the company to carry on the financing necessary to sustain its construction program."

Presently the MMRPA is petitioning for a reduction in the amount of the increase. Weber said the process is a long and weary one. However, if they are successful, prior payments will be retroactive as of Sept. 30.

In the meantime, consumers will have to bear the cost.

Homecoming Activities Start Next Monday

Chelsea High school students will once again spend a week of decorating themselves in this year's Spirit Week festivities that precede the Homecoming game to be played Friday, Oct. 17 against Milan.

Each day on the calendar has been marked with a special theme and special activities to spark students' faculty and players alike for the culmination of the week's activities when the Bulldogs will do their best to knock off Milan.

Leading the way on Oct. 13 will be "Dress-Up Day." According to Sue Morrison, who heads up the planning committee of 10 Young ladies at Chelsea High school will be dressed in their finest, with the exception of long gowns, and the men may even be in coats and ties. Later that day at 7 p.m. the eight Homecoming Queen contestants will battle it out in a balloon-toss (that's water balloons). The winner,???? She presumably will not get wet. Half an hour later at 7:30 p.m., the freshmen will meet the seniors and the sophomores the juniors for a game of Powderpuff football. The winners will play off later in the week.

Bobby socks, slicked back hair, pleated plaid skirts, round collared blouses, a package of camels rolled up your t-shirt sleeve and lots and lots of bubblegum will be the order of the day for Tuesday, as students dress in 50's garb to reenact the college years of their parents. At 8 p.m. that evening they will join hands for a snake dance through downtown. That must be seen to be appreciated.

The Bicentennial theme has been encouraged to dress them; chosen for Wednesday. Students will be in colors of red, white and blue or to arrive at school dressed as a colonist. A tug of war will be held that evening during the half-time of the freshman football game.

Those who have the urge to put shocking combinations together will find that "Crazy Day" on Thursday has been tailored just for them. Have the urge to wear stripes, plaid and polka-dots? Perhaps you would prefer to put clashing colors together. What-

ever, wear it. That evening a Pep Rally will be held on the football field at 6:30 p.m. Cheerleaders will be out to fire everyone up; and not just for Friday's contest, but for the Powderpuff finals that will commence at 7:30 p.m.

"O blue and gold we're backing you..." And just to show their spirit for the Bulldogs, Friday has been dedicated as "Blue and Gold Day." A Pep rally will be held during school and skits will be performed by each class. Also appearing will be the Queen candidates. They will answer impromptu questions fired at them by M. C. Bill Rademacher.

And then there is the wait until 7:30 p.m. that evening when the Bulldogs find themselves up against one of their toughest competitors this season, Milan.

Half-time will provide some relief from the battle when Linda Fulcher, 1974 Homecoming Queen, returns to crown the 1975 winner. She will be crowned with a Tiara, compliments of Winans Jewelry. The band will play, "It's a surprise." And the game will resume.

The entire week promises to be an exciting one and full of activities that are sure to remind us of the "good old days."

United Way Campaign Hits 16% of Goal

Chelsea's United Way campaign is in full swing. Campaign chairman, Mrs. Robert Robbins remarked that "things are going well and people are working hard."

Reported after eight days of the drive is an estimated \$4,761, about 16 percent of this year's goal set at \$30,817. With only a few more days left, Mrs. Robbins is confident the goal will be met.

Among the sectors, professional workers have reported \$420; residential workers, \$34; rural workers, \$185; schools, \$900; commercial workers, \$1,272 and industrial workers, \$2,200.

Frank Staffan Dies at Ann Arbor Hospital

Frank W. Staffan of 2033 Medford, Ann Arbor, died Oct. 4 at St. Joseph Mercy Hospital following a brief illness. He was 75 years of age.

Mr. Staffan was born April 24, 1900 in Chelsea the son of George P. and Mae Wood Staffan. Mr. Staffan's grandfather was the first funeral director in Chelsea in 1858.

After he graduated from the School of Embalming at the University of Michigan, Mr. Staffan and his father opened Staffan Funeral Home in Ann Arbor in 1923. He was the president of Michigan Funeral Directors Association in 1952 and 1953; retiring in 1972 after 49 years in the business. He was a member of the Ann Arbor City Council for

12 years; a member of the First United Methodist church; Elks Lodge No. 325, Barton Hills Country Club and Lions Club of Ann Arbor. He is survived by his wife, Frances; one daughter Mrs. Robert (Nancy) Whitmire of Stevens Point, Wis.; two grandchildren; one brother, George L. Staffan and one sister, Mrs. Fred Wagner, both of Chelsea; several nieces and nephews.

Funeral services were held at the Moore Memorial Chapel in Ypsilanti at 1 p.m. Wednesday with the Rev. Fred Maitland and the Rev. Gordon Jones officiating. Private graveside services followed in Oak Grove Cemetery.

Memorial contributions may be made to the American Cancer Society.



RECENTLY ELECTED PRESIDENT of the Ann Arbor Board of Realtors for 1976 is Robert Thornton. He is head of his own real estate agency, Robert H. Thornton, Jr., P.C., with his main office in Chelsea and branch offices in Ann Arbor and Stockbridge. He has been in the real estate business since 1968, opening his own office two years later in Chelsea.

Robert Thornton Elected To Head Realtor Board

Robert H. Thornton, Jr., has been elected president of the Ann Arbor Board of Realtors for 1976. Thornton, 49, is head of his own real estate agency, Robert H. Thornton, Jr., P.C., with his main office in Chelsea and branch offices in Ann Arbor and Stockbridge.

Also elected at the Realtor group's annual meeting Thursday were William C. Rogers as vice-president, Randolph W. White as treasurer and Louis K. Binder as secretary. Rogers just this week opened a new real estate office, The Plymouth Colony, in Ann Arbor after spending the last two years as a partner in Markeson, Zahn & Rogers, White, elected to a second term as treasurer, is the president of Wilson-White Co., Inc., in Ann Arbor. Mrs. Binder is an associate broker with the firm of Spear & Associates, Inc.

Elected to two-year terms on the Board of Directors were Realtors John Gillies of The Gillies Co., Carolyn Dana Lewis of Earl Keim Realty of Ann Arbor and Rogers. Besides re-electing Realtor Thornton (Continued on page three)



DEVELOPMENTAL LEARNING MATERIALS: Chelsea Kiwanis Club purchased learning equipment for use in the learning disabilities classes at both North and South school. Both pieces of equipment, a balance beam and the balance board, are to assist children in the development of good motor co-ordination. Showing how it is used are Sandy Young (left) and Susan Young (right).

Standing, from left, are Sylvester Wojcicki, principal of South school; learning disabilities instructor Susan Miller; Robert Benedict, principal of North school; and Kiwanis Club president, Sam Johnson. Mrs. Miller said "This is the first year we have had our own materials. Prior to this year we borrowed them from the Washtenaw Intermediate School District."

Established 1871 **The Chelsea Standard** Telephone 475-1371

Excellence Award By Michigan Press Association
1951-1952-1960-1964-1965-1966

Walter P. Leonard, Editor and Publisher

Published every Thursday morning at 300 North Main Street, Chelsea, Mich. 48118, and second class postage paid at Chelsea, Mich., under the Act of March 3, 1879.

Subscription Rates (Payable in Advance)

In Michigan:		Outside Michigan:	
One Year	\$6.00	One Year	\$8.50
Six Months	\$3.50	Six Months	\$4.50
Single Copies	\$.20	Single Copies	\$.25

MEMBER
NATIONAL NEWSPAPER
Association - Founded 1885

National Advertising Representative:
MICHIGAN NEWSPAPERS, INC.
257 Michigan Ave.
East Lansing, Mich. 48823

Uncle Lew from Lima Says:

DEAR MISTER EDITOR:

If you had to boil down the discussion at the country store Saturday night to one topic, you'd have to call it cat skinning. Zeke Grubb, kiked things off with a report on how Tucson, Arizona worked out the problem of buses allus running behind schedule, and the fellers took off from there in all directions.

Zeke said the Tucson Transit System figured out buses were running late because they had to stop and pick up to many riders. So they worked out runs for the buses where there wouldn't be as many people to pick up and they got right on time. Course allowed Zeke, folks still is waiting for the bus where it use to run but slow buses was the problem, not people wanting to get from one place to another. Zeke said he reckoned that was a headache for a different study commission that probable would work on it six month and recommend that

Tucson build moving sidewalks so folks could travel while they wait for the bus.

Ed Doolittle said he didn't see why changing the routes wouldn't work for the buses after the success the trains had with this plan. When the railroads decided 100 pounds of coal was a heap easier to move than a 100 pound woman with four hatboxes and two big suitcases, they figured out all kinds of ways to haul more coal and less people. Try to travel by train in this country today and you'll see how good the railroads got it worked out, was Ed's words.

Actual, Clem Webster said, what the buses ought to do is give a contract to haul mail. When the Postal Service organized like a corporation, Clem said, they must of picked Penn Central Railroad for a model. Since the more mail they move the more money they lose, the post office probable would be happy to tie in with the buses on a deal where the less service you give the better off you are. The Postal Service was to close half their post offices and just deliver mail on short runs where they ain't many people, they could cut that \$2 billion loss expected this year. True, Clem said, folks wouldn't get their mail, but high costs is the problem. Gitting the mail delivered is another problem.

And there was the feller that heard the telephone companies were going to start charging for long distant information. Bug tookum had saw where he had wrote to more than 900 phone companies and got their directories so he could look up the number of anybody he might want to talk to. Now he's got a room full of phone books, and all them books he ordered through the mail meant more business and more loss for the post office. Bug figured the feller can come out ahead by opening his own long distant information service and undercut the phone company's rates.

Like I said, Mister Editor, sometime you skin the cat and sometime you git skinned.

Yours truly,
Uncle Lew.

Dial-A-Garden Topics Listed

Dial-A-Garden, with pre-recorded daily gardening tips, is in operation 24 hours per day, 7 days per week. The Dial-A-Garden phone number is 994-1022.

Friday, Oct. 10 and week-end through 13—Roasting Sunflower Seeds.

Tuesday, Oct. 14—The Truth About Potatoes—Something Good That's Good for You.

Wednesday, Oct. 15—Drainage—Wet or Water Logged?

Thursday, Oct. 16—Harvesting Black Walnuts.

4-H members take part in an average 2.3 learn-by-doing projects annually. Most popular are animal science, food-nutrition and preservation, and bicycle care and safety.



JUST REMINISCING

Items Taken from the files of The Chelsea Standard

4 Years Ago...

Thursday, Oct. 7, 1971—

Attorney David C. McLaughlin, a Chelsea native has returned to Chelsea to enter into a law partnership with Attorney William Rademacher. The firm will now be known as Rademacher and McLaughlin.

More than 150 persons from the Chelsea area witnessed the cornerstone laying ceremonies at Our Saviour Lutheran church, 1515 S. Main, Sunday, Oct. 3. Officiating at the ceremony were the Rev. William Keller, organizer of the congregation and its new pastor, and the Rev. Norbert Mueller of St. Paul Lutheran church in Ann Arbor.

Kiwanis Club of Chelsea added two new members and elected a new slate of officers for the 1971-72 year at their regular weekly meeting Monday night. George Staffan was elected club president. Louis Burghardt, first vice-president, and Charles Cox, second vice-president, Norman Bauer and Sam Vogel were inducted into the club.

Chelsea Police Chief George Meranek was taken to St. Joseph's Mercy Hospital in Ann Arbor last Thursday afternoon after suffering severe chest pains.

14 Years Ago...

Thursday, Oct. 12, 1961—

Norbert Merkel, chairman of the Steer Club Committee of the Chelsea Chamber of Commerce, has announced that the next year's club will be organized at an open meeting of prospective members and their parents in the Chelsea high school cafeteria.

Roland Eder, general chairman of the Jaycees chicken barbecue held Sunday at Pierce Park under ideal weather conditions, said yesterday that the exceptional success of the affair was the result of outstanding team work on the part of all Jaycees. A total of 1,500 chicken halves were barbecued and served.

Donald Sexton, 18, son of Mr. and Mrs. A. L. Sexton of Cavanaugh Lake received a citizen award for valor last night at a meeting of the Law Enforcement and Industrial Security Association of Washtenaw county.

The Rev. Paul M. Schnake was the speaker at the Kiwanis club meeting Monday evening and told about his recent trip to Ecuador to deliver livestock gifts on behalf of Church World Service.

24 Years Ago...

Thursday, Oct. 11, 1951—

The Community Fair parade Saturday was delayed because of the rain and it was approximately 2:15 when it got underway at the starting point at the public school. Included in the line-up were a dozen floats entered by organizations, schools, factories and garages. First place went to the Chelsea Chamber of Commerce entry with a replica of Pierce park.

Mrs. Herbert Sanborn has announced that the 1951 fund-raising campaign for the Salvation Army will begin in Chelsea next Monday, Oct. 15. Mrs. Sanborn and Mrs. Charles Lancaster are co-chairmen of the Chelsea campaign.

Mrs. Stephen Slane has tendered her resignation as PTA president of the high school it was revealed at a meeting of the executive board held at the home of Charles Cameron Tuesday evening. Mrs. Donovan Sweeney accepted the nomination as a candidate for the office.

Eric Keil formerly of Bayreuth Bavaria in Germany is making his home here with Mr. and Mrs. John Weber of Madison St.

Telephone Your Club News To 475-1371.

BOURN'S ORCHARD
6146 Dexter-Ann Arbor Rd.

APPLES

Red Delicious
Northern Spy
Picked or U-Pick
9 a.m.-6 p.m.
Closed Thursdays

MICHIGAN MIRROR

By Elmer E. White, Secretary, Michigan Press Association

Politics vs. Justice?
Should you the voter have a say in picking the men and women who'll sit on the benches of Michigan's highest courts?

Or should those decisions be made by officialdom: the governor and a special Judicial Qualifications Commission?

Gov. William Milliken says the second idea—appointment rather than election of judges to the Supreme Court and the Court of Appeals—is the better idea. And he plans to work for a change in the current election system when the legislature is back at work this fall.

"In a recent Office of Criminal Justice Programs survey, our courts ranked relatively low in public confidence," Milliken said. "Among the 14 criminal justice agencies tested, the Supreme Court and local courts ranked ninth and tenth in public confidence—and I think this public attitude is most unfortunate."

Milliken says he is concerned that "political visibility, rather than judicial qualifications, all too often has been the basis for public awareness of court candidates. The appointment process," he says, "could do much to counteract the adverse image indicated by this survey."

The proposed constitutional amendment that would authorize appointment of the Supreme Court and Court of Appeals judges "would raise the quality of justice throughout the state by eliminating much of the political element inherent in direct election," the governor said.

That amendment, endorsed by the State Bar of Michigan, requires a two-thirds vote of the legislature and a vote of the people before it could be implemented.

Race Is On
Hot and heavy campaigning won't begin for a while, yet, but the race and guessing games already are underway for the upcoming contest to fill the U.S. Senate seat of Michigan's Phil Hart.

Hart, a Democrat, announced earlier this year that he'll retire from the Senate at the end of this, his third term in office. Candidates are cropping up in all corners of the state. And political commentators are discussing the relative merits and demerits of various individuals.

On the Democratic side, those most frequently mentioned as potential successors are: Atty. Gen. Frank J. Kelley; Secretary of State Richard H. Austin; Congressman James G. O'Hara of Utica; and Flint Congressman Donald W.

Regle, Jr., who switched from the GOP side two years ago after strong disagreements with the Nixon Administration over conduct of the Vietnam War.

Republicans also find themselves with several would-be candidates. They include: Congressman Marvin Esch of Ann Arbor; former Congressman Robert Huber from Troy; University of Michigan Regent Deane Baker; and House Republican Leader Dennis O. Cawthorne, of Manistee.

Beans with Blight?

Farmers who want their bean seed tested for bacterial blight—disease organisms that can affect the quality and yield of their harvest—can do so with the help of the Michigan Agriculture Department these days.

The MDA is again offering the tests, at the reduced rate of \$7 per five-pound sample, through Dec. 15. (If growers want germination tests too, they'll be asked to pay an extra \$2.50.)

Between Dec. 16 and March 15, MDA charges \$15 per sample, and there are no samples accepted for testing from March 16 to Oct. 1.

Anyone who wants to use the MDA testing service may get the proper forms to send along with the seed samples from the

Department, county extension agents, and most elevators in bean-growing areas.

Jobless at School
Economic problems, which meant a tight job market for Michigan this past year, may have put more people in the classroom.

That is the conclusion drawn by Wayne State University, which posted a new all-time high in student credit hours for the 1970-76 academic year.

WSU officials say 1,262,334 credit hours were taught during the year—topping the previous record year (1971-72) by well over 5,000 hours.

Cider Ready
The lines at one Southeast Michigan area mill stretched nearly a city block—two and three abreast—one recent weekend.

It's older time, and Michigan fans of the tangy drink are ready. The Michigan Apple Committee made up of many of the state's apple growers, predicts more than 17 million bushels of apples will be produced in the state this season.

Reflectors Installed on I-94 Median Barriers
At Jackson, Ann Arbor

Lansing—Reflectors have been installed on concrete median barriers on Interstate 94 Freeway near Jackson and Ann Arbor, in an experiment to provide more visibility in darkness, the Department of State Highways and Transportation said today.

The reflectors, approximately two inches square are constructed of plastic and installed near the top of median barriers on eastbound I-94 near Airport Rd., west of Jackson, and eastbound I-94 just east of the M-14 interchange west of Ann Arbor.

The experiment will be evaluated after one year. In the meantime, public comments regarding the reflectors should be addressed to: Research Unit, Traffic and Safety Division, Dept. of State Highways and Transportation, Drawer K, Lansing 48904.

1975 Cross Country Schedule

Thursday, Oct. 9—Milan*	Home
Saturday, Oct. 11—Mason Invitational	
Tuesday, Oct. 14—Dexter*	Away
Thursday, Oct. 16—Saline*	Home
Saturday, Oct. 18—Manchester Invitational	
Wednesday, Oct. 22—League Meet	
Saturday, Oct. 25—Regional Meet	
Saturday, Nov. 1—State Meet	

Girl Charged With Larceny From Store

A 16-year-old Chelsea girl was petitioned in 14th District court Tuesday on charges of simple larceny.

According to police reports, the young girl is accused of having shoplifted two sweaters from Dancer's Main St. store. The sweaters are valued at \$32.

Manager of Dancer's, Mark Hurst, reported that he observed the young lady taking numerous items into the dressing room, returning some, and then taking more. When she returned them to the rack for the final time, Hurst believed some were missing.

Outside the store he questioned her and discovered two sweaters inside a white cloth bag she was carrying.

She was taken to the police station where officers held her until her mother arrived.

Youth Pleads Guilty to Two Charges

Charged on two counts, assault and battery and malicious destruction of property, Ronald Eugene Joseph of 532 McKinley St., appeared in court Tuesday pleading guilty on both counts.

Joseph was charged with both counts at the end of September.

According to police reports, Joseph assaulted a 65-year-old woman as she was entering the rear door of her home on McKinley St. The woman told police that Joseph shoved her in the back and knocked her down. She later identified him from a photo police had taken.

Later that evening, Joseph broke windows at another home in the vicinity. Joseph denied the charge, but a lie detector test later showed he had indeed broken the window. When confronted with the evidence he admitted to the crime.

Joseph awaits sentencing, set for Nov. 25.

How John and Bobby went from rent payments to home payments...



John and Bobby wanted to put their money into home payments not rent payments. So they turned to Ann Arbor Federal Savings for the money to buy the home of their choice.

A 95% loan was arranged for a 30 year term. They put \$1,700.00 down. Ann Arbor Federal Savings provided a mortgage for \$31,200.00. The annual percentage rate came to 9.75. Now John and Bobby are repaying their loan like rent at \$355.00 a month. Of this amount \$256.68 is for principal and interest while the remainder pays their taxes, hazard insurance and private mortgage insurance. It is a good, solid deal.

For John and Bobby, buying a home was a smart investment. Every month part of their payment goes to building equity, a form of forced savings. Most of the rest of their payment goes to pay taxes and interest which are deductible from their income at Income Tax time. And their home will be a good hedge against inflation.

If you, too, are interested in buying or building a home, turn to the mortgage experts at Ann Arbor Federal Savings or ask your realtor or builder about Ann Arbor Federal Savings Gold Key Mortgages.

ANN ARBOR FEDERAL SAVINGS

10 OFFICES TO SERVE YOU IN: ANN ARBOR, CHELSEA, DEXTER, MANCHESTER, YPSILANTI, BRIGHTON, SALINE

Member: Federal Home Loan Bank System • Federal Savings and Loan Insurance Corporation



THE LUTHERAN RETIREMENT COMMUNITY, INC.

SUBORDINATED DEBENTURES

up to **10%**

per annum, current yield, maturing in seven and one half years, interest payable semi-annually. The above interest rate is the maximum rate payable under the variable rate plan which is computed to be one-percent over the prime interest rate prevailing at the Detroit Bank & Trust Co., trustee for the LRC, Inc. Available only to bona fide Michigan residents.

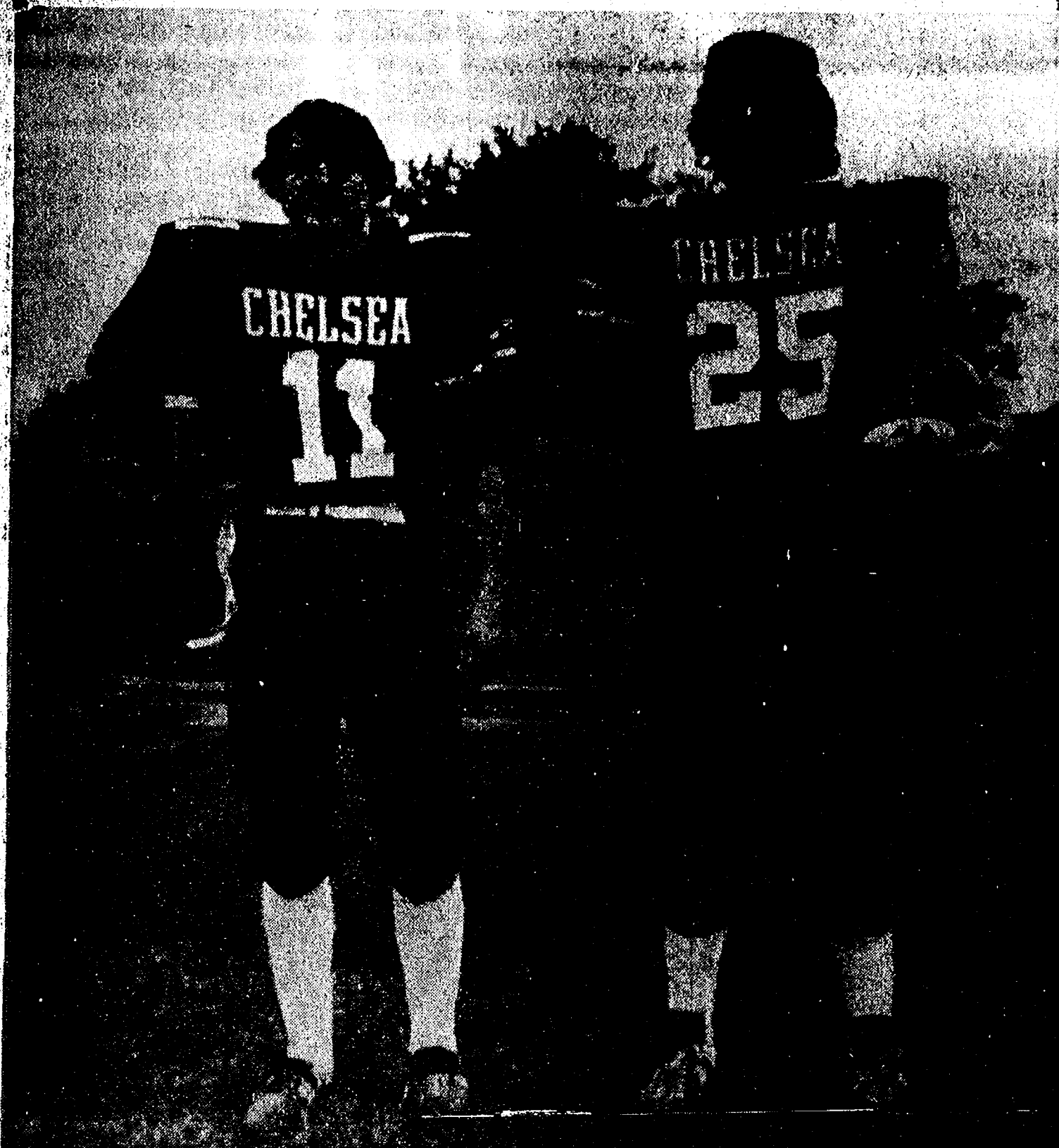
This announcement is neither an offer to sell nor solicitation of offers to buy these debentures. Such offering is made only in the information statement on request.

THE LUTHERAN RETIREMENT COMMUNITY, INCORPORATED
16935 West Fourteen Mile Road
Birmingham, Michigan 48009 644-8912

Please send information to:

Name _____
Address _____
City _____ State _____
Zip _____ Phone _____

Gridders of the Week



DAVE WATSON (11): "I think we have got the most talent in the league. We just have to put it together," said senior defensive back and split end Dave Watson as he spoke of the '75 Bulldog squad. The 5'9" 145-pounder continued, "It's more than just good players though, it's unity and a good leader. This year we have got them both." According to Watson, the Bulldogs may not have won their game with Brighton last Friday if it had not been for Dennis Bauer. "He fired us all up," he remarked. As far as his own personal performance, the second-year veteran said, "I just wish I would get some more passes." Dave has three sisters, Bonnie, 25, Jackie, 24, and Becky, 12; and a brother, Kirk, 20. He is the son of Mr. and Mrs. D. Watson of 12 Sycamore Dr.

MARK BURNETT (25): A senior defensive safety in his second year on the varsity squad, Mark Burnett played ball in both his sophomore and freshman years. In the spring he runs track. Speaking of their victory over Brighton, Burnett said that even though the Bulldogs won, they did not play as they could. "After beating a tough team like Novi you have a mental letdown when it comes to a team like Brighton." And as far as a season title, Burnett does not want to make any predictions. "We still have the two toughest teams in front of us, Milan and Saline. If we win over Milan it will put us into the Saline game a lot better." The son of Mr. and Mrs. Gene Burnett of 109 Grant St., Mark has three sisters, Elaine, 22; Jody, 23; and Vicki, 19.

JV Gridders Score Big Win Over Brighton

Mother Nature finally co-operated with Chelsea's JV football squad last Thursday by providing the players with sunshine and a dry field instead of the usual Thursday rain and mud. The Junior Bulldogs responded with a near perfect game, shutting out a tough Brighton squad, 20-0.

Highlighting the game was the Chelsea offense, (they) "finally showed what they are capable of," remarked coach Jon Schaffner. The Junior Bulldogs marched 80 yards the first time they had the ball, mixing the running of Tim Welshans and Mike Young with a pass from Rock Brandel to Matt Fischer. Young capped the drive with an eight-yard run; he also provided the extra points on a three-yard run.

Also scoring were Chuck Broderick on a 58-yard pass from Jeff Powell and Tim Welshans on a two-yard plunge. "Young and Welshans had excellent games," Coach Schaffner said, "carrying for 103 and 75 yards, respectively." Schaffner said the linemen were also responsible for the yardage gained, opening holes time after time.

Coach Tom Neumeyer singled out Dave Scrotenboer, Todd Headrick, Don Harris, Jason Lindauer, Victor Verchereau, Todd Weber, Chuck Broderick and Steve Pennington.

Not to be outdone, by their teammates, the Chelsea defense held their fourth consecutive opponent to under 100 yards on offense. In addition, the Bulldog defense had 15 consecutive scoreless quarters to their credit. "We are getting very fine play out of our defensive line of Tread, Headrick, Victor Verchereau, Jason Lindauer, Jamie Bollinger and Todd Weber," said Coach Neumeyer. "Our defensive backs; Steve Pennington, Matt Fischer, Jeff Powell and Rock Brandel and our linebackers, Mike Young and Tim Welshans played real well against the first real passing team we've faced."

Pacing the defense were Victor Verchereau with one fumble recovery and nine tackles and Mike Young with one interception and seven tackles. The other tackles were made by Jeff Powell, 11; Todd Weber, 9; Rock Brandel, 8; Jamie Bollinger, 7; Jason Lindauer and Todd Headrick, 3; and Don Harris, Steve Check, Brandy Rinehart and Scott Stafford with one each.

Today (Thursday) the Junior Bulldogs play a tough South Lyon team. "It will be another test for both the offense and defense," remarked Neumeyer. South Lyon

Girls JV Cagers Soundly Trowned By Novi, 56-16

Chelsea girls JV basketball team was soundly defeated by Novi on their home court last Tuesday. The score was 56-16. "We've never beaten Novi's JV team and I think the biggest factor in this year's defeat was our lack of experience. We only have four returning sophomores on the team this year and Novi took advantage of our weaknesses," said Coach Cindy Bradbury.

Leading scorers for Chelsea were Lori Miles and Nancy Knott with four points each. Adding two points each were Joan Lutovsky, Linda Breza, Verónica Satterthwaite and Sheryl Kiel.

Thornton...

(Continued from page one).
ton to the board of directors for a one-year term, Realtor-Associate Charles T. Wagner of Fletcher & Klein, Inc., was also elected for a one-year term.

The new officers and directors elected at the Realtor group's Oct. 2 annual meeting will be formally installed into office in December and officially assume their new duties Jan. 1. Realtors Clifford Bennett of Swisher Realty and John Shattuck of Dalitz Realty are carry-over directors for an additional year and complete the board's leadership team for 1976.

President-elect Thornton has been in the real estate business since 1968 when he became licensed as a salesman with the firm of Eibler, Frisinger & St. Amour. Two years later, in November of 1970, he opened his own real estate office in Chelsea. His real estate career followed more than 15 years in the automobile business. After seven years as a sales analyst with Ford Motor Co. in Dearborn, he became marketing manager for Al Mikulich Pontiac agency in East Lansing where he remained until buying his own dealership, Jackson Chrysler-Plymouth in Jackson.

A native of Philadelphia, Thornton attended Temple University for one year before transferring to Indiana University where he earned his BS degree in accounting and an MBA degree in management. He is a member, and past president, of Inverness Country Club at North Lake where he now resides with his wife, Alice, and their family.

now stands at 4-0 and has a first rate defense that has been unscorced upon in four contests.

Girls Varsity Cagers Lose To Novi, 19-44

Chelsea High school's girls varsity basketball team was run over by the Novi Wildcats. "Our girls could not contain Novi's high percentage of shots made from the outside. The Wildcats were held outside the key but that didn't slow their act of gaining points," said Coach Cheryl Turner. The final score was Chelsea 19, Novi 44.

High scorer for Chelsea was Karen Keiser with six points with Teri Lutovsky and Mickey Bridges close behind with four points each. Teresa Breza, Penny Collinsworth and Karin Roskowski contributed the rest of Chelsea's points.

FRESHMAN FOOTBALL SCHEDULE

Oct. 15—Napoleon home
Oct. 22—Tecumseh away
Oct. 28—Saline away
All games start at 7 p.m.

Arrested on Charges of Assault and Battery

Arrested by Chelsea police Sunday on charges of assault and battery filed by the Washtenaw County Sheriff's Department was Kurtis Lee Keleman.

Chelsea police observed Keleman, who lives at 171 Madison St., going eastbound on Orchard St. They stopped him and made the arrest. He was then transported to the Washtenaw County Jail to await further action.

BELIEVE IT OR NOT!

The price of a season ticket to all 6 Kiwanis Travelogues in the 1975-76 series is only \$8.00!

SOUTHERN BOY MANOR MOTEL

Efficiency Units - By Day, Week, or Month

13190 M-52

PHONE (517) 851-4213

(2 miles south of Stockbridge)

HUMMEL SHOWINGS

See a FREE MOVIE on the making of HUMMEL Figurines at LEWIS JEWELERS

Hummel representative will be on hand to answer all questions.

FREE HUMMEL FIGURINE

Will Be Given Away

2 SHOWS WEDNESDAY, OCT. 15

1:00 p.m. and 3:00 p.m.

FREE PARKING

LEWIS JEWELERS

PHONE 994-5111
MAPLE VILLAGE SHOPPING CENTER
Maple & Jackson Rds., across from Fox Village Theatre

A Standard Want Ad Gets Results!

FULL LINE SUPERMARKET

BEER - WINE - LIQUOR
AUTHORIZED
FOOD STAMP STORE
LOTTERY TICKETS
MARATHON GAS PUMPS

Jiffy market

Big Enough To

Serve You . . . Small Enough To Know You!

Open 7 Days A Week

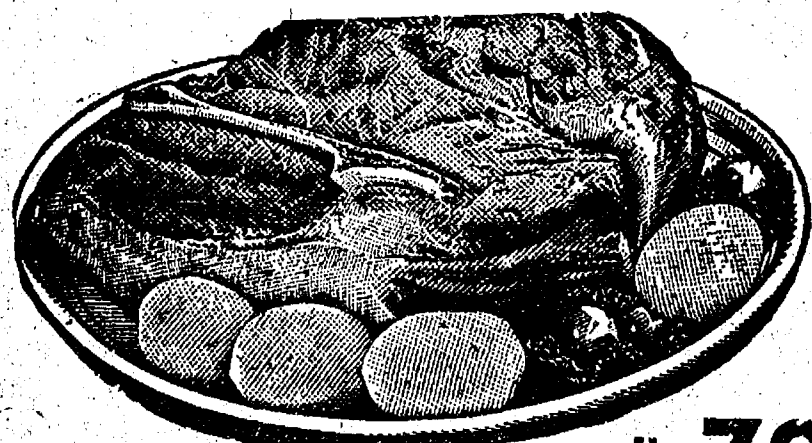
7 a.m. to 10 p.m.

Corner Sibley & Werkner Rds.
PHONE 475-1701

Sale Prices Effective
Thursday, Oct. 9 thru Sunday, Oct. 12

TOP VALUE FOODS - GUARANTEED SATISFACTION - COURTEOUS SERVICE

U.S.D.A. Choice



Blade Cut Chuck Roast . . lb. 79¢

Center Cut Chuck Roasts lb. 89¢

ARM CHUCK ROAST \$1.19 lb. ENGLISH ROAST \$1.19 lb. RIB STEAKS \$1.59 lb.

BEEF STEW \$1.19 lb. GROUND CHUCK \$1.19 lb. GROUND ROUND \$1.29 lb.

U.S.D.A. CHOICE BEEF

SIDES - FRONTS - HINDS
WHOLE RIBS - WHOLE LOINS

CUSTOM CUTTING - WRAPPING - FREEZING
QUICK SERVICE ON BUTCHERING
YOUR BEEF OR OURS

BORDEN'S GLACIER CLUB

ICE CREAM

1/2 gal. 79¢

KIMBIES

Toddler-Daytime Diapers

Box of 12 \$1.69

MEAT DEPT.

SPECIAL

FARMER PEET'S

RING

BOLOGNA

98¢ lb.

KLEEN - MAID

BREAD

WAY BAKING CO.

3 1 1/4-Lb. Loaves \$1.00

WHITE BREAD

JIFFY MARKET IS CHELSEA'S MARKET

OPEN
7 DAYS
7 to 10

U.S.D.A.
CHOICE
FRESH
MEATS

Large Dept.
Produce
Dairy
Frozen Food

LIQUOR
BEER
WINE
GAS PUMPS

Supermarket
Groceries
Borden's
Ice Creams

DAD'S

VANILLA WAFERS

1-Lb. Pkg.

48¢

FANTA

SODA POP

COCA-COLA CO.

Root Beer 1 Qt., 1 Pt. 49¢
Red Cream Soda (48 Oz.)
Orange No Return
Sprite Bottles
LIMITED SUPPLY

VELVET CREAMY PEANUT BUTTER

5-Lb. Pail \$2.59

HOME TOWN

POTATO CHIPS

JIFFY SPECIAL

9-Oz. Bag

49¢

JIFFY MARKET'S MARATHON GAS PUMPS

MARATHON ALL SEASON

REGULAR GAS

58.9

PREMIUM LEAD FREE

59.9

PRICES INCLUDES ALL TAXES

10W-30 MOTOR OIL

ONE U.S. QUART

69¢

Jiffy Market - Chelsea's Milk Stop



FARM MAID

HOMOGENIZED

MILK

gal. \$1.19

FARM MAID PURE

ORANGE JUICE

1/2 gal. 59¢

Delicious and Sweet

HOME PROCESSED

APPLE CIDER

1/2 Gal.

79¢

1 Gal.

\$1.49

Mich. State Lottery Tickets - Fresh Meats - Beer - Wine - Produce - Frozen Foods - Ice - Health and Beauty Aids - Groceries - Fresh Meats - Daily and Sunday Papers

Letters to the Editor

Dear Editor:

I want to compliment the Chelsea High School Band and direction for the great half-time performances they have put on at the football games. In my opinion I feel they should recognize the flag carriers. As of yet I have not heard their names announced. These girls work just as hard as everyone else and I feel they should be recognized and have more of a chance to be seen and show their talents. Keep up the good work girls.

Unhappy citizen.

Kensington Metropark near Milford is one of Michigan's favorite year-around playgrounds. Attractions include fall color, boat launching, fishing, picnicking, golf nature trails and playgrounds. For details phone 635-1631 (Milford).

New 4-H Woodcraft Club Being Organized

A new 4-H group is being formed in the Dexter area. This group will be working in woodcraft. Anyone between the ages of 7 and 13 years who is interested in learning woodworking projects, please contact Donald Gibb at 878-3707 after 6 p.m.

Co-Op Nursery Awards

Winners of the Chelsea Co-Op Nursery drawing held Oct. 2 are Allan Dancer of Dexter and Floyd Northrup of Chelsea. Banner was presented with a Sony portable television set. Northrup won a week-end for two at the Marriott Inn in Ann Arbor.

Purpose of the drawing was to raise funds for the nursery which serves both Dexter and Chelsea residents.

Subscribe today to The Standard!

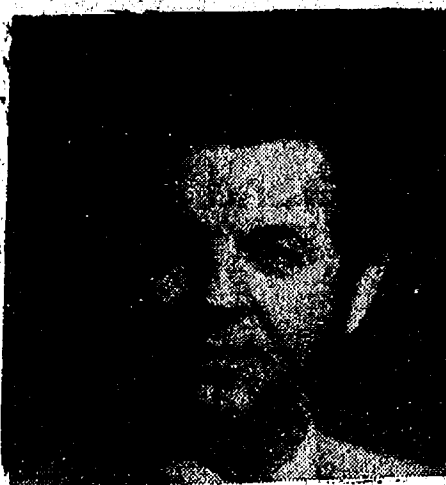
CHIROPRACTIC FOR LIFE

CHIROPRACTIC CENTER

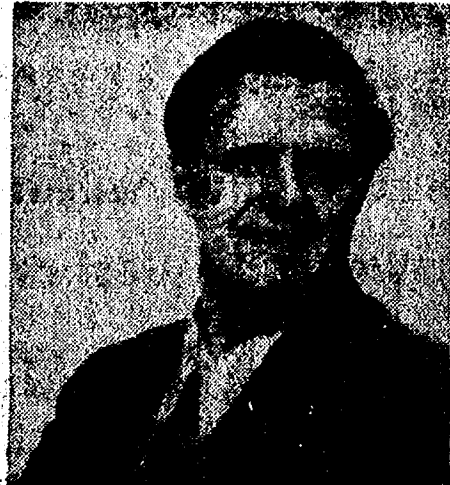
PHONE (313) 475-7633

7970 Clark Lake Rd.

Chelsea, Mich.

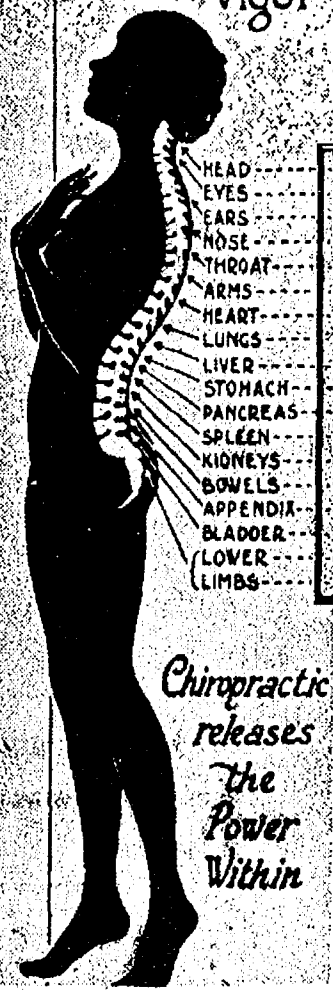


DR. RAY ELWART



DR. TONY LaFRAMBOISE

The Spine is the Human Switchboard controlling Health and Vigor



Chiropractic is universally recognized as the foremost drugless health science. Its fundamental principles are readily explained and are readily understood by the intelligent mind. Millions of cases have been restored to health by the competent application of these principles, and in thousands of cases Chiropractic has proved successful after medicine and other methods had failed to get the patient well.

Graduates of The Palmer School of Chiropractic are engaged in the professional practice of Chiropractic in every state of the United States, and in practically every foreign country and territory in the world.

You are asked to investigate the merits of Chiropractic, because its record of achievement in restoring the sick to health can successfully challenge that of any other known health method.

Two Doctors of Chiropractic to serve you in Chelsea and the surrounding area: Director Dr. Ray Elwart and Dr. Tony LaFramboise... 6 day a week office... 475-7633.

St. Louis School Notes

The boys at St. Louis school were anxiously awaiting the arrival of their Superior General, Father Olimpio Giampedraglia, late Monday afternoon who will stay with them for one week. The father is spending his last year in office as Superior General of his order, traveling all over the world to see schools run by the fathers. This is his second visit to St. Louis School. While in the United States, the Father will also visit the orders other school for boys in Springfield, Pa.

Last Sunday parents of the boys visit the order's other school for boys in Springfield, Pa.

annual get-acquainted meeting and at St. Louis school held their election of officers. Elected president was Mr. Marviesin. All other officials were re-elected. The group selected members and chairpersons so that they can begin to plan for the remainder of this year and 1976.

Frisbees of the "flying pickle" variety are flying at St. Louis school. The boys received two boxes of them, compliments of Mrs. Gentz of Detroit. And they are just beginning to calm down after the excitement of a ride on Mac Packard's famous 1939 Dodge red fire truck. Packard took the boys on a ride around the grounds of the school. "They had a ball," remarked Fr. Umberto. "When the people of Chelsea wonder what they can do for the boys of St. Louis school, it is things like this, simple things, perhaps just an hour or two of their time that makes the boys so happy."

Fr. Umberto reported on a unique sports league recently formed for boys in special schools and institutions. Coaches from some six schools in the area were invited to attend a meeting at Highpoint in Ann Arbor, where discussion centered on the formation of in-

tercenter sports activities. The main objective is to provide the students with seasonal sports activities, to develop self-confidence, muscle co-ordination and the spirit of competition. Among sports played in the intercenter group are flag football, floor hockey, wrestling, basketball, gymnastics, swimming, diving, track and field. Three home flag football games are presently scheduled at St. Louis school. The first will be played Oct. 10.

Speaking of sports, the Knights of Columbus will again sponsor the boys swimming program. A program, which Fr. Umberto stresses as very important for the boys. The Fr. also remarked that he was very pleased to be initiated into the second and third grades of the Knights of Columbus at a meeting held in Michigan Center.

Mrs. Lenox Kimball who has worked with the boys at St. Louis school for five years in the capacity of counselor and who now heads-up the work study program was honored last week on her birthday. A party was given complete with cake, ice cream and gifts by the boys at staff at the school.

Frosh Grid Team Loses To Brighton

A fine Brighton team rolled to a 14-0 half-time lead, then held off Chelsea's second half charges to defeat the Bulldogs, 28-6, Tuesday, Sept. 30.

The first Brighton TD came midway in the first period on a six-yard cross buck. The game saw-sawed until the middle of the second period when Brighton struck again with a 27-yard scoring pass. A run provided the extra points. Chelsea took the ensuing kick-off at their own 37 and mounted a drive of their own. The big play was a third down pass from Jesse Colburn to Gary Thornton for 12 yards to keep the drive alive. However, a touchdown never came as the clock ran out with the Bulldogs on Brighton's 12-yard line. Chelsea picked up where they left off in the third period. Taking the kick-off, the Bulldogs drove 66 yards in 13 plays with Greg Reed scoring from nine yards out. The big plays on this drive were runs of 16 and 17 yards by Chuck Young and Reed. Young's second interception of the evening gave Chelsea another opportunity from Brighton's 40 a few minutes later, but a fumble stalled this drive on the 25.

Brighton got on the board again early in the final quarter with a 27-yard pass and the conversion lead, 22-6. Chelsea steamed back down, aided by a penalty and a pass from Colburn to Young for 13 yards.

A pass to Joe Verway moved the ball to the 23, but a fourth down play fell short of the mark, ending Chelsea's last serious threat. The Bulldogs got the ball twice more, but turned it over both times on interceptions, the second one resulting in a Brighton touchdown on the final play of the game.

Offensively the Bulldogs had 200 total yards and completed four of eight passes; however, they couldn't seem to get the critical plays to succeed. Defensively, Chuck Young had two interceptions, and Greg Reed 11 tackles in a fine game. Scott Powers and Joe Verway also turned in steady performances. The defense blunted Brighton's attack, but couldn't consistently keep it bottled up. "We played excellent ball in streaks," said Coach Bill Bainton. "We just have to keep it up."

Correct addresses are of major concern to the Veterans Administration. Each month the agency mails 7.3 million checks to veterans and their dependents for compensation, pension and education benefits.

TODAY'S BEST BUY

A Season Ticket to the 1975-'76

KIWANIS TRAVELOGUES

6 Great Shows
Only \$8.00!

HEATING OIL
GASOLINE - DIESEL
OIL BURNER SERVICE

Washtenaw Farmers Oil

Phone 971-7230

District Court Proceedings

Week of Sept. 30-Oct. 6

Robert Strong pled guilty to charges of driving with a suspended license. Fines and costs, \$75 plus three days in jail or 20 days.

Vicki Berlin pled guilty to charges of being drunk and disorderly. Fines and costs, \$50.

Henry Koetz was found guilty of speeding. Fines and costs, \$21.

Fredrick Piedrahita was found guilty of speeding. Fines and costs, \$20.

Vivian Visel pled guilty to charges of leaving the scene of property damage. Fines and costs, \$100 plus six months probation.

Isamel Rangel was sentenced to spend five days in jail on violation of probation.

Glenn Davis was sentenced to pay fines and costs of \$250 and to attend at the Alcohol program at Bexly Hospital on charges of driving while under the influence.

Lawrence Bash was sentenced to pay fines and costs of \$350, and one year probation on charges of impaired driving.

Jack Benefel, Jr., was sentenced to pay fines and costs of \$100, to one and one-half years probation and to five days in jail on charges of being drunk and disorderly.

Jerry Spiess pled guilty to charges of careless driving. Fines and costs, \$30.

Richard Boggett pled guilty to charges of speeding. Fines and costs, \$21.

Mary Randall pled guilty to the possession of open intoxicants in a motor vehicle. Fines and costs, \$35.

Adrienne Bobo pled guilty to charges of speeding. Fines and costs, \$10.

Edward Snidar was found guilty on charges of no personal flotation devices. Fines and costs, \$16.

Richard W. Wilson was found guilty to careless driving. Fines and costs, \$34.

Michael Laraway pled guilty to charges of failing to stop within a safe assured distance. Fines and costs, \$31.

Mark Pomorski pled guilty to charges of speeding. Fines and costs, \$31.

Gregory Lear pled guilty to charges of reckless driving. Fines and costs, \$50.

Richard A. Hahles pled guilty to charges of careless driving. Fines and costs, \$50.

Davis Mason pled guilty to charges of being drunk and disorderly. Fines and costs, \$50.

Benjamin Colmery III pled guilty to charges of speeding. Fines and costs, \$21.

John Auey was sentenced to pay fines and costs of \$34 and to six months probation on charges of careless driving.

James Barnes was found guilty of being drunk and disorderly. Fines and costs, \$50.

David Britton was sentenced to pay \$100 fines and costs and to one year probation on charges of reckless driving.

School Children May Be Released For Bible Classes

The Rural Bible Mission, a missionary organization working with school-age boys and girls in Michigan in co-operation with local churches will offer released time Bible classes to the pupils of North and South schools and 5th graders at Beach school.

Taught by Don Koehn, of the Rural Bible Mission, the classes are non-sectarian in nature. They will be held at Immanuel Bible church Oct. 14, Nov. 11, Dec. 9, Jan. 13, Feb. 10, March 9 and Apr. 13 from 1:45 to 3 p.m.

Michigan law provides that pupils may be released during school hours to attend such activities. However, school officials are not permitted to release a pupil for this purpose during school hours unless they have written permission from parents.

Parents interested in having their children attend are advised to send written permission to their child's teacher in order that the child will be released from class.

For further information phone the Rev. LeRoy Johnson at 475-8936.

Chelsea Girls

Basketball Schedule

Oct. 14-Brighton*home
Oct. 16-Lumen Christiaway
Oct. 21-Lincoln*home
Oct. 28-Saline*away
Nov. 4-Lincoln*away
Nov. 6-Nov*home
Nov. 11-Dexter*home
Nov. 14-Brighton*away
Nov. 18-Saline*home
*League games.

Family Film Stated Saturday By Rec. Council

Chelsea Recreation Council will present another in its series of full length family feature films Saturday, Oct. 18 at 2 and 8 p.m. "The Cat" is the story of a cat boy and a killer wildcat. The color film is the adventure-drama of a young boy lost in the woods of California's mountain country and befriended by a killer wild cat.

A short cartoon, "Road Runner," will precede the feature.

Admission is 50 cents. Children under 12 must be accompanied by an adult at the 8 p.m. showing.

'Learn To Bowl' Classes Still Have Openings

The "Learn To Bowl" program offered through the Chelsea Recreation Council in conjunction with Chelsea Lanes, still has a number of openings for young people who are interested in learning the sport.

Classes will be offered Monday and Wednesday after school for young people 10-12 and 13-16, respectively. Each class will run from 3:30 to 4:30 p.m. for five consecutive weeks.

Fee for the course is \$3. Interested persons are asked to register through recreation director, Holly Porter at 475-9815.

APPLE BUTTER FESTIVAL

SATURDAY, OCT. 11

10 a.m. to 5 p.m.

at Unadilla Campground

Watch for the signs, see apple butter made pioneer style. Apple butter, home-made doughnuts and bazaar items for sale.

Sponsored by the Unadilla Presbyterian Church

FOR PROFIT

Feed Formulas Tested, Proved To Get Results

Extra proteins, vitamins and minerals in proper balance, scientifically blended, make our feeds real profit producers for you.

Farmers' Supply Co.

Phone GR 5-5511

DUNBAR'S DEXTER LOCKER

PAUL DUNBAR, OWNER

8083 MAIN ST., DEXTER

PHONE 426-8466

FREEZER BEEF BUNDLE SALE

40 lb. Bundle

2 pcs. CHUCK ROAST
2 pcs. SIRLOIN STEAK
4 pcs. RIB STEAK
10 lbs. BEEF PATTIES
6 lbs. SHORT RIBS
2 pkgs. GROUND BEEF
5 lbs. BACON
6 pcs. PORK CHOPS

\$44.50

70 lb. Bundle

2 pcs. SWISS STEAK
4 pcs. T-BONE STEAK
6 pcs. RIB STEAK
2 pcs. SIRLOIN STEAK
2 pcs. CHUCK ROAST
2 pkgs. SHORT RIBS
10 lbs. BEEF PATTIES
5 pkgs. GROUND BEEF
12 pcs. PORK CHOPS
6 lbs. BACON
6 lbs. WIENERS

\$73.50

100 lb. Bundle

3 pcs. SIRLOIN STEAK
4 pcs. T-BONE STEAK
6 pcs. RIB STEAK
3 pcs. CHUCK STEAK
3 pcs. CHUCK ROAST
2 pcs. ENGLISH ROAST
2 pkgs. SHORT RIBS
3 pkgs. GROUND BEEF
10 lbs. BEEF PATTIES
6 lbs. PORK CHOPS
6 lbs. PORK STEAK
10 lbs. BACON
6 pcs. CHICKEN

\$99.50

Prepared for Your Freezer

We Also Sell in Small Quantities

BEEF - VEAL - PORK - LAMB

Discount to Civic Groups - We Accept Federal Food Stamps

CUSTOM SLAUGHTERING & PROCESSING

CHELSEA JAYCEES
CHICKEN
BARBECUE
SUNDAY, OCT. 12
Corner of M-52 and Old US-12, Chelsea

Serving Starts at 11:30 a.m.

1,500 Dinners Will Be Served
PUBLIC INVITED
\$2.50 per serving

Sponsored By

CHELSEA JAYCEES

NORM COLBRY, Chairman



Mrs. Charles H. Rubino

Eileen R. Bristle, Charles H. Rubino Are Wed Saturday at Zion Church

Approximately 200 guests were present to hear the wedding vows spoken by Eileen Ruth Bristle to Charles H. Rubino Saturday evening at Zion Lutheran church. The 6 p.m. ceremony was officiated by the Rev. John Morris.

The bride is the daughter of Mr. and Mrs. Lenox Bristle. Mr. Rubino is the son of Mr. and Mrs. Joseph Rubino of Madison Heights. Miss Denise Grob of Ann Arbor was the organist. Miss Denise Leonard sang "Sunrise Sunset" and the "Wedding Song."

For her wedding to Mr. Rubino, the bride chose an empire waist white satin gown accented with white lace and ribbon. A white satin headpiece held her fingertip veil in place. She carried a bouquet of white roses.

The bride's sister, Mrs. Ronald Falcone of Fayetteville, N.C., served as matron of honor. She was dressed in a rust colored gown of polyester crepe with short sleeves. She wore a sprig of baby's breath in her hair.

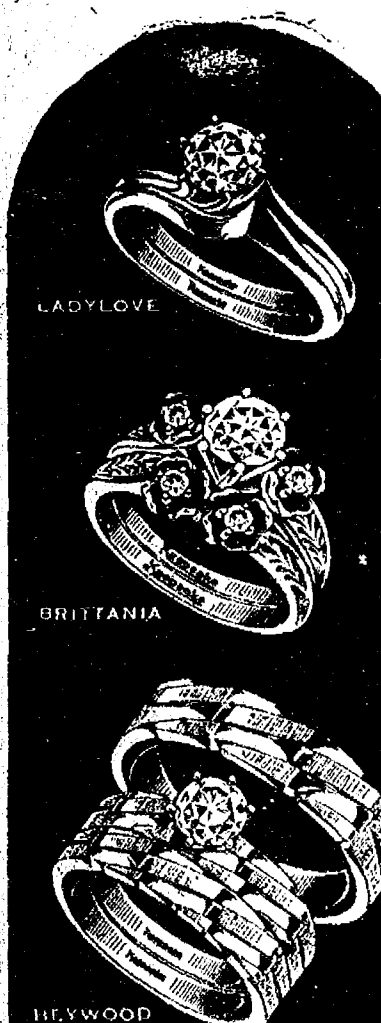
Bridesmaids were Miss Susan Skittenhelm, cousin to the bride of 13487 McKinley Rd. Mrs. Dennis Kelly of Utica and Miss Geri Rubino, sister to the bridegroom of Berkley. They were dressed in apricot polyester crepe short sleeved gowns and wore sprigs of baby's breath in their hair.

Mr. Daniel Kubik of Sterling Heights served as best man.

Magic Mirror Beauty Salon

Open Tuesday thru Friday
9 a.m. to 9 p.m.
Saturday, 8 a.m. to 3 p.m.

PHONE 665-0216



Keepsake
REGISTERED DIAMOND RINGS
Range from \$100 to \$10,000

Happiness
is a
diamond



A perfect diamond reflects full brilliance and beauty... the perfect symbol of your love. With a Keepsake we offer that perfection... now and forever.

WINANS JEWELRY
YOUR REGISTERED KEEPSAKE JEWELER

Federated Women's Clubs Convention Scheduled Oct. 15

The West and East Ballrooms of Weber's Inn, 3000 Jackson Rd., Ann Arbor, will be the location of the Southeastern District, Michigan State Federation of Women's Clubs annual convention on Wednesday, Oct. 15.

The affair will be hosted by the Washtenaw County Woman's Club and its president, Dr. Louella E. Cable. Members of the local clubs from Manchester, Milan, Ypsilanti, Ann Arbor, Saline, and Whitmore Lake have helped with the arrangements under the direction of Mrs. Carleton Heilbronn, Milan, and Mrs. Stanton G. Roesch, Manchester. Registration will begin at 8 a.m. with coffee and rolls available.

Seventy-two clubs in the Southeastern District are expected to send delegates and exhibits. Mrs. Moja Schjolin of Birmingham is the district president.

Theme of the day is Hawaiian, and entertainment will be provided by a skit written and produced by the Milan Woman's Club. "Hawaiian Interlude" and a swimming demonstration at the pool by the "Michigan" University of Michigan Swim Students. The menu for the luncheon at the Pool Patio will feature sweet and sour chicken, green beans with almonds, rice, rolls, beverage and assorted tarts. There will be many door prizes.

Firm reservations for the luncheon must be made with the individual club presidents.

Co-Op Nursery School Notes

The month of September has been a busy one for the parents and children at the nursery school. The three-year-old children have been learning to recognize basic shapes, coloring and pasting with squares, circles and triangles.

The children had their first special color day of the year with Blue Day. On this day, all of the children wore blue clothes to school brought blue show and tell items and had blueberry muffins for the treat. At the end of the session they were given blue circular stickers which they had fun sticking on themselves, each other, and all around the school.

The four-year-old classes spent the month studying about themselves. All of the children brought a baby picture of themselves to school and after enjoying each other's pictures they put them up on the bulletin board so that the parents could enjoy guessing "who was who?"

The children made fingerprints and footprints, measured their heights and had a pretend birthday party during which they made cakes out of paper, putting on the same number of candles as their age.

Later in the month they tasted different fruits and vegetables and decided which part of the plants they were eating. After going to the apple orchard, and picking apples, the children made caramel apples and applesauce.

During September school was closed for two days and the mothers met at school without their children for informal coffees. They spent the time learning about each other's families and interests, exchanging recipes, and enjoying each other's company.

At the October general meeting, the winners of the annual drawing were picked by Anita Slocum, seller of the most tickets. Alan Dancer of Dexter won the 12" portable TV and Floyd Northrop of Chelsea won the weekend for two at the Marriott Inn of Ann Arbor. It was announced at the meeting that on Tuesday, Oct. 21, Mother Earth's Creations will be presenting a plant party at the school at 8 p.m. Guests are welcome.

Lower Huron Metropark near Belleville is open year-around. Fall attractions include scenic drives, fall color, picnicking areas, playfields and an 18-hole "Par 3" golf course. For details phone 697-9181 (Belleville).

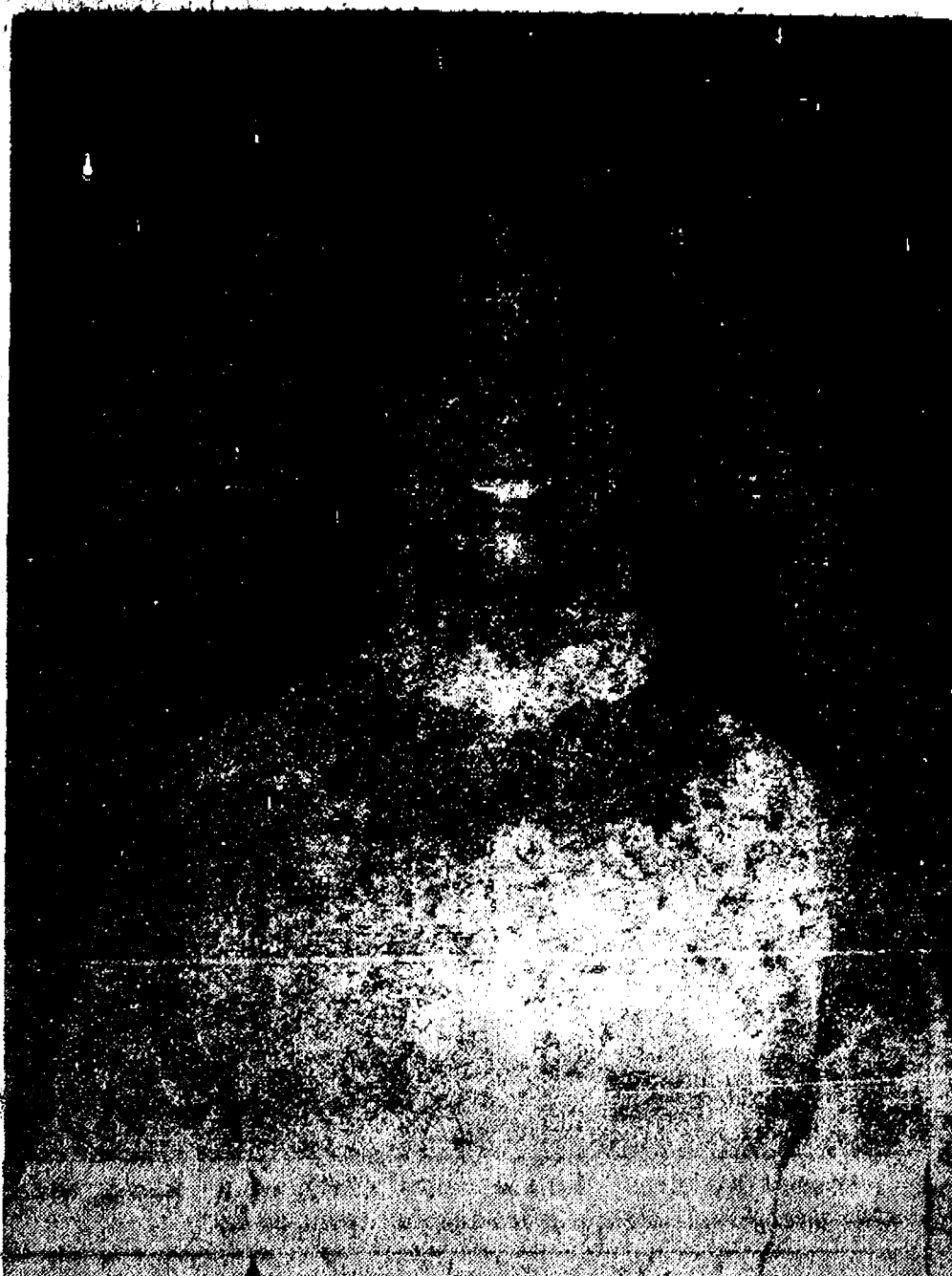
KAREN'S BOUTIQUE

118 S. MAIN ST.

STORE-WIDE SALE
25% Off

On All Merchandise
Except Hosiery and Indian Jewelry.

Thurs., Fri., Sat., Oct. 9, 10, 11
BANK AMERICARD LAY-AWAY
MASTER CHARGE NOW!



Mrs. Douglas Brink

Patrice L. Stoffer, Douglas Brink Exchange Vows at St. Paul Church

A 7 p.m. ceremony Saturday Oct. 4 at St. Paul United Church of Christ was the setting for the marriage of Patrice Louise Stoffer to Douglas Brink. The Rev. R. J. Ratzlaff presided over the evening ceremonies.

The former Miss Stoffer is the daughter of Mr. and Mrs. John Stoffer of 237 Adams St. Her husband is the son of Mr. and Mrs. Ronald Brink of Ann Arbor.

Dennis Stoffer selected two vocal numbers, "Wedding Song" and "Follow Me," to sing at his sister's wedding.

Serving her sister as maid of honor was Diane Lynn Stoffer of Ann Arbor. Danny Spalding was

the best man. The bridegroom's niece, Annette Thompson, was the flower girl. Ushers were Larry Brink, brother of the bridegroom, Dennis Stoffer, brother of the bride, and Joe Kern.

A reception at the Inverness Country Club followed the ceremony.

Following a trip to northern Michigan, the couple will make their home in Ann Arbor.

The bride is a 1971 graduate of Chelsea High school and is employed at St. Joseph Mercy Hospital in Ann Arbor. Mr. Brink is also a 1971 graduate of Chelsea High school. He is working as a carpenter.



CUB SCOUT NEWS

DEN 1, PACK 455
Our first meeting was held Sept. 30. We opened with the flag ceremony. Our leaders this year are, Mrs. Donovan and Mrs. Alexander. Brad Flanagan is Den Chief. The six boys in our den are: Danny Alexander, Danny Darrow, Brian Donovan, Tim Erskine, Eddie Mullaly, Dan Waidyke. Eddie is denner for October. We played a game and discussed our projects. We closed with the living circle. Eddie brought treats.
Brian Donovan, scribe.

DEN 4, PACK 455
We began our meeting by saying the pledge. We worked on our Bob Cat requirement. Mrs. Pierson helped. Jason brought treats. All are in attendance. We played games. Joey McDougall was the winner. We made scarecrows to hang on our door.
Jason Pierson, scribe.

A FAMILY AFFAIR

THE KIDS WILL PROFIT BY
THE 6 GREAT NEW SHOWS
IN THE COMING TRAVEL SERIES
SO WILL YOU!

SEASON TICKET
ONLY \$8

SCHOOL LUNCH MENU

Week of Oct. 13-17

Monday—Baked lasagne, buttered peas, bread and butter, chocolate and milk.

Tuesday — Hotdog and coney sauce, buns, baked beans, fruit, cake and milk.

Wednesday — "All American Lunch" cheeseburger and buns, trimmings, crispy potatoes, fiesta slaw, chilled peaches and milk.

Thursday—Sloppy joes and buns, slice cheese, french fries, harvard beets, dessert and milk.

Friday—Fishburgers and buns, tartar sauce, cole slaw, potato chips, cherry dessert and milk.

12-Year-Old Girl Presents Concert at Methodist Home

12-year-old Christina Pax gave a farewell concert of sorts to residents of the Chelsea Methodist Home and invited guests Thursday evening, Oct. 2.

Miss Pax, the daughter of Mr. and Mrs. Charles Pax, has been studying piano for five years now; four of those years with Pat Stirling.

When Mrs. Stirling learned that Christina and her family were moving to Maryland, she decided to do something special for her student... thus the concert.

Young Christina played six solo selections, among them the ever popular "Spinning Wheel," by Albert Elmerich and "Pineapple Rag" by the acclaimed Scott Joplin.

America's veterans include 294 living recipients of the Medal of Honor, the nation's highest award for military valor.

Marathon Bridge Program Underway With 40 Members

The Marathon Bridge 1975-76 program has successfully begun for some 40 Chelsea area members. The Woman's Club of Chelsea sponsors this event which in their fourth season has innovated some changes in their operating procedure.

Because of the growth of the group, which originated with 20 members, two leagues have been formed consisting of a day and evening league. The members play once a month for a duration of nine months and cap their year with a pot-luck and distribution of awards dinner in May of 1976.

Girl Scouts...

TROOP 145

At the Brownie Troop 145 meeting in the Brownie Ring we talked about our investiture service. After that we made our Brownie keepers. Before we left we made the Brownie ring again and closed with the Brownie squeeze.

Amy Wolfgang, scribe.

September standings are as follows:

DAY LEAGUE		Pts.
Team No. 6	1997
Team No. 5	4710
Team No. 2	2800
Team No. 7	2780
Team No. 8	2070
Team No. 6	1970
Team No. 1	1820
Team No. 9	1590
Team No. 4	1570
Team No. 3	1520
Team No. 10	1350
EVENING LEAGUE		Pts.
Team No. 17	5590
Team No. 13	4630
Team No. 20	2850
Team No. 19	2480
Team No. 16	2250
Team No. 15	2180
Team No. 11	1530
Team No. 12	1270
Team No. 18	820
Team No. 14	570

CARPET REBIRTH

Give your carpet a new lease on life
by cleaning it regularly.

JET SPRAY CARPET CLEANING

Use Your BankAmericard Phone 761-3025 or 475-1509
Ask for John Lixey.

HURON FARM'S GOLD BARN CIDER MILL

3431 N. ZEEB RD. - DEXTER

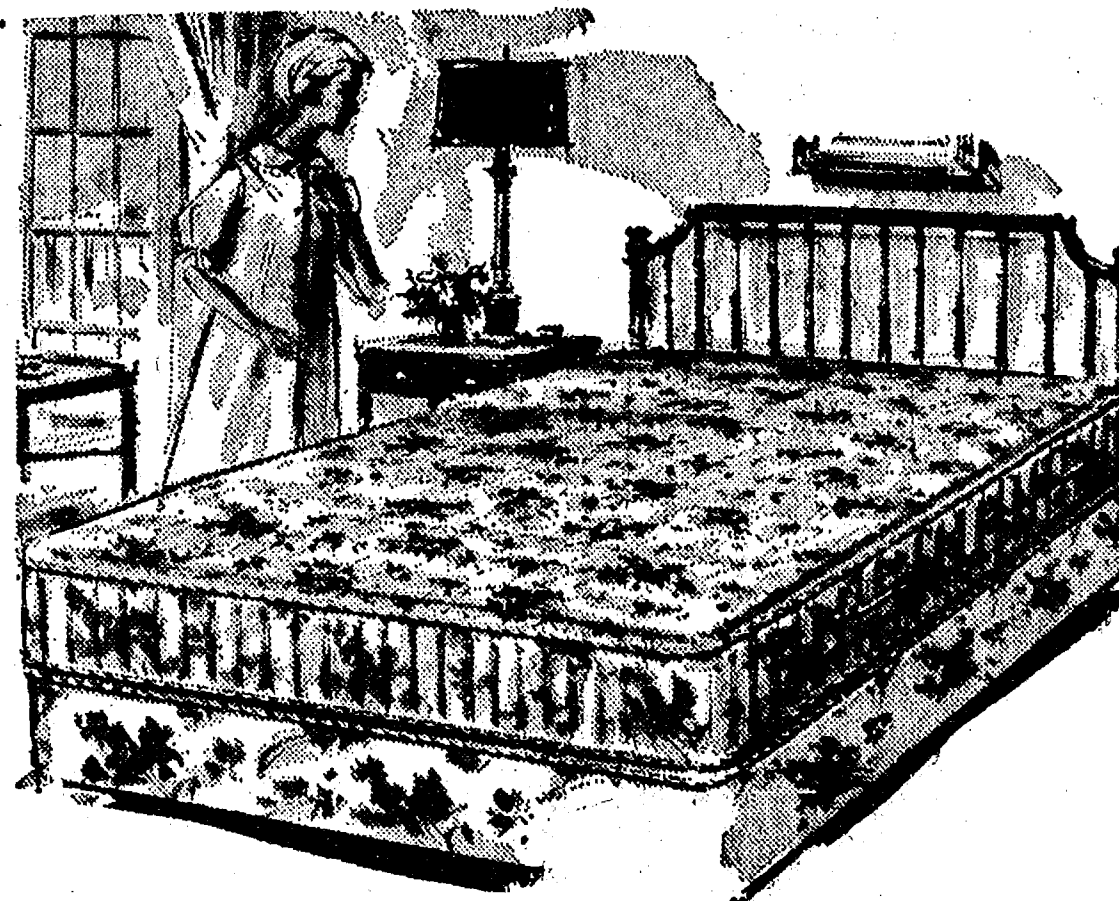
WEEK-END SPECIAL FRIDAY, SATURDAY AND SUNDAY

1 Bu. JONATHAN or MCINTOSH APPLES
Plus your choice of apple, blueberry or cherry frozen fruit pie.

\$6.00

Freshly Pressed Cider - Hot Donuts - Taffy Apples - Honey
All Varieties Apples - Seasonal Fruit

OPEN DAILY



the dawning of a new day: Posture Quilt on sale

Merkel's is proud to offer you a grand night's sleep, featuring firm, correct support. Stearns and Foster's "Posture Quilt" mattress and box spring is on sale! This sleep ensemble has a mattress with: 312 tempered steel 13 gauge coils; an Insulo Spring cushion; a seat edge border; and a rich, durable damask ticking. The box spring has 72 coils, 8 1/2 gauge. Choose 3-piece king set at \$299.95, 2-piece queen set at \$199.95, full set at \$159.95, or the twin set at \$139.95.

Merkel's
FURNITURE and CARPET

MAIN STREET IN CHELSEA PHONE 475-8621 • CHICAGO BLVD. IN TECUMSEH PHONE (517) 434-2205
OPEN MONDAY AND FRIDAY NIGHTS UNTIL 9:00 • PROFESSIONAL DESIGN CONSULTING

Community Calendar

Chelsea Child Study Club meeting at the home of Mrs. Diane Borton, Oct. 14 at 8 p.m. Subject, "Packing Your Suitcase."

Rummage sale, North Lake Methodist church, North Territorial Rd. at North Lake, Oct. 24-25, 9 a.m. to 4 p.m. Bake sale on Oct. 25 xadv19

Family Day for Girl Scouts and families, Camp Crawford, Crane Rd., Ypsilanti, US-23 at Willis, Sunday, Oct. 12 from 11 a.m. to 4 p.m. For information call 426-3294.

Chelsea Community Farm Bureau will meet Thursday, Oct. 16 at Sylvan Township Hall, 7:30 p.m., pot-luck supper. Please note change of date. Mr. and Mrs. Roy Kalmbach and Christine Heydlauff, hosts.

Ann Arbor Saturday night singles, Oct. 11 at the Ann Arbor Y, 350 S. Fifth Ave., 7:30 pot-luck, dance 9-12, information call 663-6068.

Senior citizens of the former Korner House will have their pot-luck supper Oct. 16 at the meeting rooms on Park St. The committee is Mr. and Mrs. William Wetzel.

Chelsea Jaycees first Tuesday of every month. Board meeting, fourth Tuesday of every month at Chelsea Lanes. Meetings begin at 7:30 p.m., guests are welcome.

Rebekah Lodge rummage sale, Oct. 10, 9 to 5 p.m., 1194 M-52, adv 17

Congressman Bob Carr's Mobile Office Van will be in Chelsea from 12 noon to 1:30 p.m. Monday, Oct. 13; Friday, Nov. 7 and Monday, Dec. 22.

Olive Lodge 156 F&AM regular communications Thursday, Oct. 9, 7:30 p.m.

Chelsea Woman's Club Rummage Sale, Oct. 16, 17, 18. Longworth Plating Service (former Buick Garage), 9-5 p.m., Sat. until noon. adv 18

Fall Meeting, Washtenaw Association of Retired School Personnel First Baptist Church, Ypsilanti, 1110 W. Cross St., Oct. 9 at 1:30 p.m., beginning with a dessert. Business meeting at 2 p.m., followed by a talk by Ford Caesar, state chairperson of the "Project Pride in America."

Past Matrons of Olive Chapter meeting to plan installation, pot-luck lunch at 12:30 Oct. 9 at the home of Mrs. Martin Steinbach, 246 Harrison St.

Weekly Tuesday Nite Singles Club, dance, 9 p.m. to midnight Ann Arbor "Y," with live band.

Date Change. Lima Township Board Meeting will meet Oct. 27 rather than the Nov. 3 date. The meeting will begin at 8 p.m. in the Lima Township Hall. Subsequent meetings will be held the first Monday of every month.

Chelsea Area Historical Society will meet Monday, Oct. 13 at 8 p.m. in the Congregational church.

Washtenaw County Medical Care Auxiliary, semi-annual meeting, Wednesday, Oct. 15 at 9:30 a.m. at the Juvenile Court Center, 2270 Platt Rd., Ann Arbor. Speaker, Thaddeus Konwiak, licensing specialist for adult foster care homes in Washtenaw and Monroe counties.

Regular business meeting, VFW Auxiliary Oct. 13 at 8 p.m. at the VFW Hall.

Modern Mothers Child Study Club will meet Oct. 14 at 8 p.m., Village Book Store.

Rogers Corners Farm Bureau Friday, Oct. 10, 8:30 p.m. at the home of Mr. and Mrs. Ray Manz, 2571 Loeffler Rd.

Special business meeting of Undilia Baseline Cemetery at Lloyd May residence, Oct. 13 at 7:30 p.m.

Chelsea Community Fair Board meeting, Oct. 8, 8 p.m. at the fairgrounds.

Annual Stockbridge American Legion dances start Oct. 4 and are held the first Saturday night of every month through April. adv 16

Friends of McKune Memorial Library. Annual membership drive is in progress. Call 475-8326.

Inquiries regarding the Chelsea blood bank may be directed to Harold Jones in the event that Mrs. Dudley Holmes is unavailable, or to Robert Moyer, American Red Cross in Ann Arbor, 971-5300.

Humane Society of Huron Valley has dogs and cats for adoption. Owners may reclaim their lost pets. Phone 662-5585. Open from 9 a.m. to 5 p.m. daily; Sunday, 1 p.m. to 5 p.m. 100 Cherry Hill Rd., quarter-mile south of Plymouth Rd. at Dixboro.

Washtenaw County bookmobile, sponsored by the Washtenaw County Library will be at the North Lake United Methodist church, 1411 North Territorial, every other Wednesday from 4:25 to 5:10 p.m., beginning April 9. Pap tests are free for all area

DEATHS

Mrs. Herman Hoyt Former Chelsea Resident Dies Monday in Florida

Mrs. Herman (Grace) Hoyt, 97, a former Chelsea resident, died Monday, Oct. 6, at Lakeland, Fla., after a long illness. Born March 15, 1878 in Putnam township, Livingston county, she was a daughter of Russell and Ellen Percival Lake. She married Jason B. Stanton; who died in 1946. In 1949 she married Herman Hoyt, who also preceded her in death.

Surviving are two nephews, Ray Lake of California and Max Schoenhals of Dallas, Tex., a grand-niece, Mrs. Paul (Ellen) Kalmbach and a grand-nephew, William Geddes, both of Chelsea. A niece, Mrs. William (Lura) Geddes preceded her in death on Feb. 24, 1973.

Prayer services were held in Lakeland on Oct. 7 at the Gentry-Morrison Funeral Home. Funeral services are scheduled for 1 p.m. on Friday, Oct. 10 at the Burghardt Funeral Home, where friends may call beginning on Thursday. Burial will be in Oak Grove Cemetery, Chelsea, following the Friday service.

Sunday Round-Up Slated at Sharon Church

Oct. 19, is Round-up Sunday at North Sharon Bible church, 17993 Washburne Rd., Grass Lake. This is the biggest event of the year and they are expecting 700 people to attend the service.

Everyone who attends will receive a free pumpkin and a North Sharon Bible church bumper sticker and for those who bring the most visitors, they will receive a free helicopter ride. The church telephone number is 313-428-7222.

women, Tuesday mornings, at St. Joseph Mercy Hospital, Ann Arbor. Call American Cancer Society office, 668-8857 for appointment.

Chelsea Area Historical Society is still taking 1975 annual memberships. Applications for membership may be picked up at McKune Memorial Library, or write Box 334, Chelsea 48118, or telephone 475-7290 for information.

Senior Citizen Fun Nite every Friday evening at 7:30.

Sylvan Township Board meeting the first Tuesday of the month, at 7 p.m., at Sylvan Township Hall.

Tours of Chelsea Community Hospital and surgical center are available for small groups. To arrange for tours, call: Neva Jordan, 426-8027, or Dorothy Miller 475-8020.

Chelsea Co-op Nursery applications for 1975-76 classes are now being taken. For information, call Jearl Mull, 426-8822 or Leslie Bowers, 475-1401. xadv12tf

Chelsea Home Meal Service delivers one hot meal a day to elderly and disabled living in the Chelsea area. For information call 475-8014 or 475-2923.

AA and Al-Anon meeting, Monday evenings at Chelsea Hospital, 8:30 p.m. Closed meetings.

Lamaze Association of Ann Arbor is now holding classes at the Chelsea Community Hospital. If interested, call 761-4402, or 475-9316.

American Legion and Auxiliary hospital equipment available by calling Guy Freysinger at 475-1961.



ROOM TO RUN: Howard Salyer (left), on a moves down the field against Brighton's defense, wide sweep finds a little more running room as he

Pioneer Day Sunday at Waterloo Farm Museum

When the signs of fall begin to appear—pumpkins in the fields, leaves starting to turn and the smell of apples in the air—members and friends of the Waterloo Historical Society are in the process of finalizing plans for the Society's annual Pioneer Day. As always this event takes place the second Sunday in October.

This year's Pioneer Day will be quite a contrast to the first one held 13 years ago which was an Open House just so people could see the first stages of restoration in the farm house. Quite a contrast to the completely restored nine-room farm house, outdoor bake house, milk-house, forge and the barn which is the latest addition to the museum buildings. Restoration of the barn is the project undertaken by the Society for its contribution to the Bicentennial. Members and friends have worked diligently all summer trying to get the barn in readiness for Oct. 12.

Demonstrations of crafts of all kinds will help set the scene for a fun day—weaving, canning, rushing, rug-hooking, wood carving, spinning, lace-making to name a few. For those who really are bitten by the pioneer bug there will be people on hand to show them how to make candles, soap, sauerkraut and cider. For the "dads" who take in the festivities Mr. Coulter, from Waterloo, will demonstrate the firing of an old musket and Mr. Rentschler, also

from Waterloo will again have his old gasoline engines. For the "small fry" Bill Landis will be on hand to give rides in his horse-drawn wagon. As a special attraction, the Bicentennial Choral Group of Stockbridge will sing some selections and then lead all interested spectators in a community sing which should provide fun for the participants and enjoyment for the listeners.

As always there will be farm fresh produce, cider and donuts, cookies and bread right from the out-door bake-over, as well as other goodies to purchase. There will be dried arrangements to buy as well as beautiful dried grasses and flowers for those who choose to make their own.

Pioneer Day is always a fun time for all and this year's Pioneer Day, Oct. 12, from 1 p.m. to 5 p.m., promises to be the best one of all.

The Veterans Administration provided \$4.1 billion in education and training assistance to 2.6 million Vietnam-era veterans and servicemen and 79,000 dependents in fiscal year 1975. Prompt notification of changes of address resulted in few delays in delivery of monthly checks.

Police Recover Auto Stolen In Ann Arbor

Chelsea police recovered a stolen auto late Monday evening while on routine patrol and arrested two St. Johns youths on the charges. Arrested were Mark Henry Rudy and Mike Wayne Ressegui.

According to police reports, officers were notified by the Ann Arbor police department that a 1967 Oldsmobile Cutlass belonging to an Ann Arbor resident had been stolen.

Later, officers were patrolling in the N. Main and Sibley Rd. area when they observed a vehicle matching the description given by the Ann Arbor police. The officers stopped the vehicle, questioned the youth and noticed that the ignition had been removed.

The vehicle was searched and impounded at Smith's Service Station and the youths were taken to the station to await their parents. The case remains open pending the filing of petitions to the Juvenile Court.

Volunteer Orientation

(Continued from page one)
indicates interest and is not necessarily a commitment. For additional information, call Patti Lawson, 475-8633.

Chelsea Police Arrest Grass Lake Man on Warrant for B & E

Chelsea police arrested a Grass Lake man late Friday evening at the Shell station, corner of M-52 and Brown Dr. on charges of a warrant arrest for felony from the Washtenaw County Sheriff's Department.

Arrested was Howard Dale Schenk.

According to police reports of officers had been advised of a valid warrant for Schenk's arrest. Late Saturday evening they observed him at the Shell Station and made the arrest for breaking and entering. The case was turned over to the Washtenaw County Sheriff's Department.

The Historical Marker at rapids view picnic area is one interesting feature at Hudson Mills Metropark, located near Dexter. Other attractions include fall color, picnic areas, nature trail and playfields. For details phone 426-8211 (Dexter).

Fair Board Annual Meet Set for Nov. 13

The annual meeting of the Chelsea Fair Board will be held Thursday, Nov. 13.

Persons interested in obtaining voting memberships may do so by paying \$1 to the fair board before Monday, Oct. 13.

The dollar entitles one to a one year membership to the fair board, attendance at the annual meeting and voting privilege.

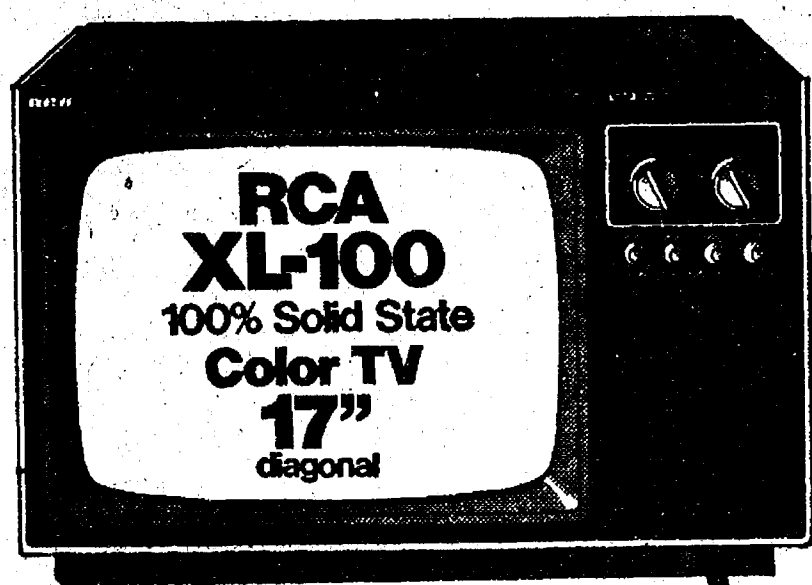
Purpose of the Nov. 13 meeting is to discuss the '75 fair and initial planning for the '76 fair.

For further information contact Fair Board secretary, Ed Keezer at Farmers' Supply, or phone 475-7510.

More than 7 million boys and girls 9-19 take part in 4-H projects and activities.

GO GAMBLER

for RCA '75 MODEL
CLOSE-OUT SAVINGS!



It's XL-100
100% Solid State
and more!

\$389⁹⁵

Save
Over \$50

Shop Now & Save on
CLOSE-OUT SPECIALS

Wall standards shelf brackets



GIVE YOU SHELVES
LIKE THESE IN
MINUTES!

★ WALL STANDARDS

Anachrome Finish
4 ft.\$1.73
5 ft.\$2.21
6 ft.\$2.52

★ SHELF BRACKETS

Anachrome Finish

6-inch68¢

8-inch71¢

10-inch77¢

12-inch86¢

★ PREFINISHED SHELVES

(Walnut-Tone Lauan)

8"x24"\$2.00	10"x24" \$2.50	12"x24" \$3.00
8"x36"\$3.00	10"x36" \$3.75	12"x36" \$4.50
8"x48"\$4.00	10"x48" \$4.95	12"x48" \$6.00
8"x60"\$5.00	10"x60" \$6.15	12"x60" \$7.50
8"x72"\$6.00	10"x72" \$7.45	12"x72" \$8.95

AT HOME SUPPLY HEADQUARTERS:

CHELSEA LUMBER

YEAR-AFTER-YEAR

The best in the business
at your doorstep
in the Kivamis Travel Series

6-ADMISSION TICKET
ONLY \$8.00

BARN SALE

SATURDAY, OCT. 11

at JERRY QUACKENBUSH RESIDENCE
13501 TRINKLE RD.

New Canning Lids - Antiques

Furniture - Misc. Items

DONATIONS WELCOME

Phone for Pickup, 475-1239 between 6 & 8 p.m.

Sponsored By

**CHELSEA HIGH SCHOOLERS
HOCKEY BOOSTERS CLUB**

\$30,000 Stock Liquidation Sale BEING OFFERED TO CHELSEA AREA AT OUR COST

ALL SPORTS

Football - Hockey - Basketball - Tennis
Baseball - Track - Golf

Shoes - Jackets - Socks - Gym Clothing - First Aid

Thursday, Friday, Saturday-9 a.m. to 8:30 p.m.

LUKE'S SPORTING GOODS
137 PARK STREET
CHELSEA

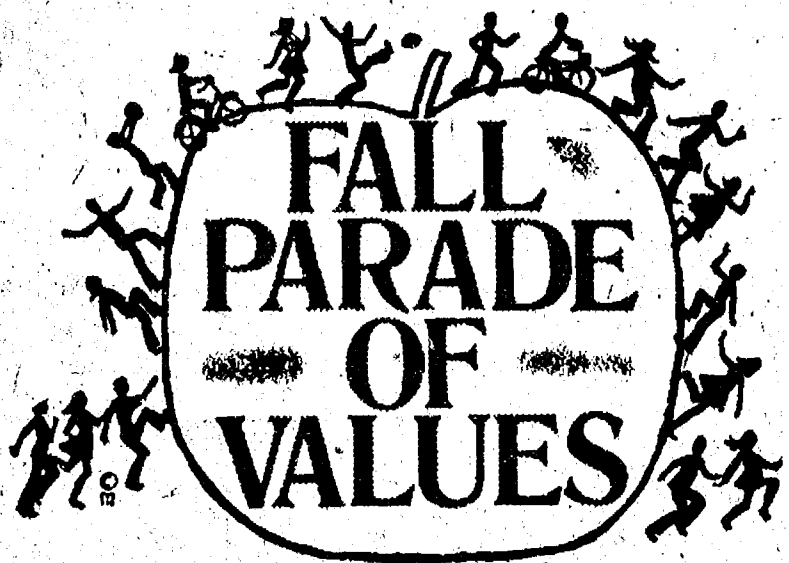
COOPER'S COMING

BIG DON HIMSELF

with a great western film
in the coming Travel Series.

Only \$8 a season ticket
BE THERE!

Layman's Sunday will be celebrated Sunday, Oct. 12 at the Chelsea United Methodist church at the 10 a.m. service. Speaking will be William Coelius who has taught speech in Chelsea schools for nine years and coaches the debate and forensics team. Coelius will speak on "Shaping our National Life." Also participating in Sunday's service will be Jim Lorenz, Sherri Plank, June Warren, Jim Mullison and Caralee Hoffmeyer. Layman's Sunday in an annual event at the Methodist church.



Friday & Saturday Only

20% OFF

ON ALL WOMEN'S NIGHT WEAR

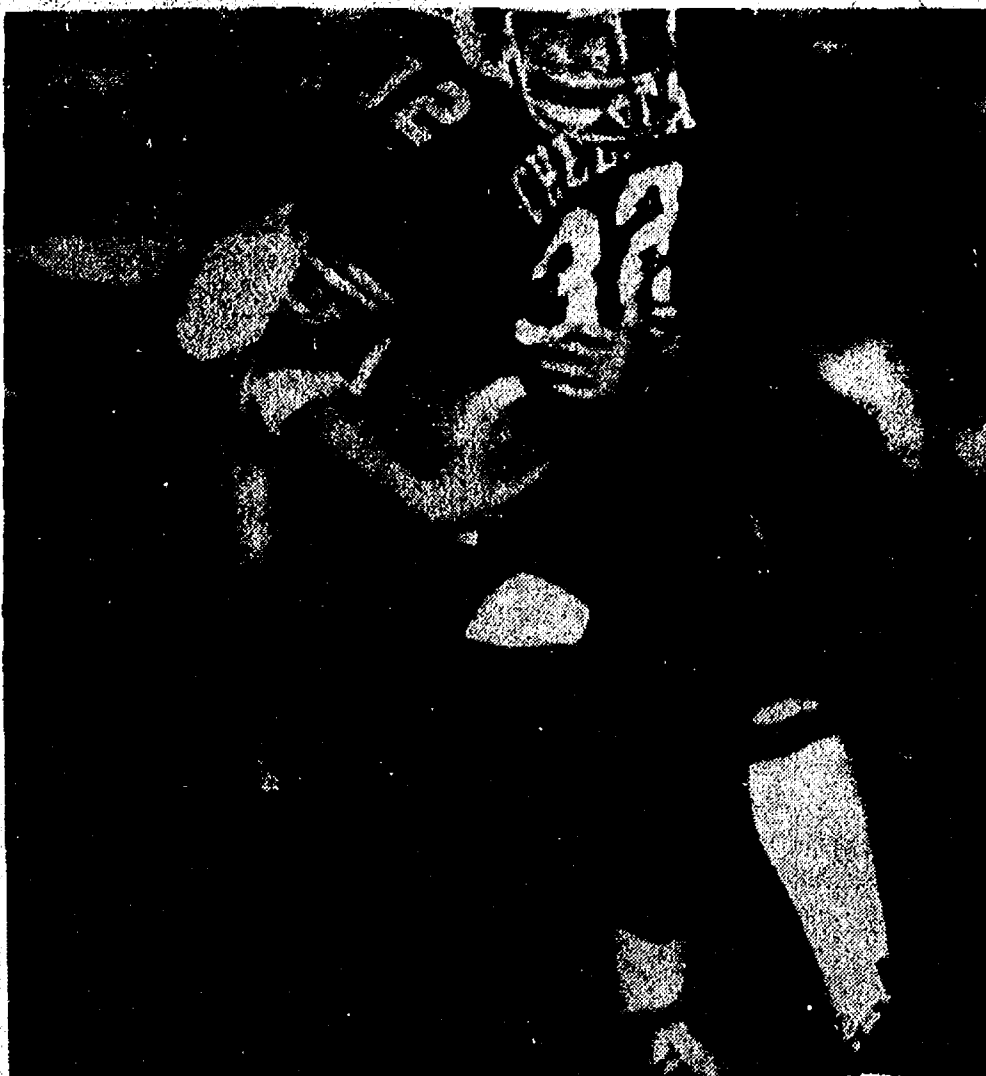
Great for a surprise gift or a present.

Apparel for the Entire Family

DANCER'S

Chelsea's Friendly Dept. Store

Milan Still Undefeated After Slipping Past Saline in 7-6 Game



IN QUICK PURSUIT: Brighton's defense is in quick pursuit of Chelsea halfback Howard Salyer as he rushes down the field on a belly play.

Milan 7, South Lyon 6. Milan's Big Reds have a lot to thank Larry Thomas for. He scored the team's only touchdown Friday evening, was credited with 28 tackles and gained 132 yards in 18 carries. If it weren't for Thomas and Milan's good offense, the Big Reds just may have lost their tie for first place with Chelsea in the SEC.

His touchdown and Bob Stevens' extra point conversion gave Milan all the points it needed for the narrow victory.

Both teams did their scoring in the first quarter of play, when the Lions turned a first quarter interception into six points and Milan came back to score and hold the Lions to 105 yards total offense.

A scoreless game for both teams was broken in the third quarter of play when Lincoln Rallsplitter, Dean Amrhein ran 73 yards for the touchdown. Tim Hess kicked the extra point and from then on the Rallsplitters worked fast for their victory. Amrhein led the attack, rushing 149 in 14 carries and two touchdowns. Other touchdowns were made by Tim Hess who had a 28-yard touchdown and conversion and one by George Czinski in the final quarter on a 68-yard run. The Dreadnaughts scored once in the third and fourth quarters.

Saline 20, Novi 8. The Hornets got a slow start on Friday night's game but picked up in the second half to defeat Novi, 20-8.

Scott Fosdick scored two touchdowns and earned a two-point conversion to give Saline 14 of its 20 points. The other Hornet touchdown was scored on a one-yard run by Gene Robinson.

Tom Morris scored for the Wildcats on a 60-yard drive in the second quarter with a one-yard run. Randy Wroten caught the two-point conversion pass from Tom O'Brien to complete the Novi scoring.

Chelsea 26, Brighton 20. It was a late touchdown that won the game for the Bulldogs Friday evening as they played Brighton, scoring 26-20.

Howard Salyer led off the Bulldogs, scoring a touchdown late in the opening quarter. Randy Guenther evened the score at 12-12 after a half-time score of 12-6 on a one-yard quarterback sneak and a kick by Rex Miles for the extra point.

Salyer brought the Bulldogs to a lead, 20-12, but Brighton fought right back to tie the game, 20-20. With only two minutes left to play Guenther capped a 49-yard drive to give the Bulldogs a win.

SOUTHEASTERN CONFERENCE Standings as of Oct. 5

Chelsea	3	0
Milan	3	0
Lincoln	2	1
Saline	2	1
Dexter	1	2
Novi	1	2
Brighton	0	3
South Lyon	0	3

Home Meal Service Still Needs Drivers

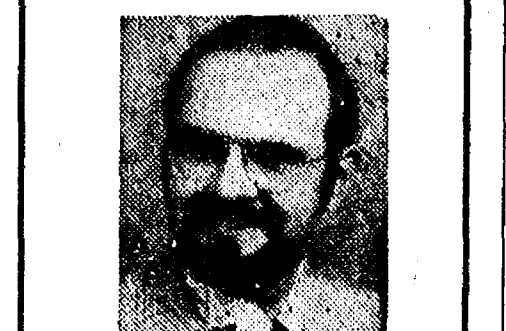
Home Meal Service of Chelsea is still in need of drivers, especially for the Sunday route. Time involved is one hour per week.

Young adults are welcome as well as elderly people who may enjoy driving and delivery with a partner.

Interested persons should call Virginia Wheaton, 475-7412; Caralee Hoffmeyer, 475-8014; or Mary Ann Merkel, 475-2739.

You and Your FARM

... one of the reasons we're in business. The first with a Farmowner's policy, the first with Agropian, the first with an environmental protection endorsement. All at a fair price. Check the facts



DAVE ROWE

107 1/2 S. Main
Ph. 475-8065

FARM BUREAU
INSURANCE
GROUP



NEW TO THE CHELSEA MEDICAL CENTER Thomas J. Brady and Dr. Paula Kim. Each is are, from left, Dr. Shirley A. McCormick, Dr. employed in family practice at the Medical Center.

Three Physicians Join Staff At Chelsea Medical Clinic

Three physicians were recently added to the staff of the Chelsea Medical Clinic according to Michael Papo, M.D.

New to the clinic are Dr. Shirley A. McCormick, Dr. Thomas J. Brady and Dr. Paula Kim.

Born in Ewen and raised in Detroit, Dr. Shirley A. McCormick graduated from Redford High school. She attended the University of Michigan receiving both her undergraduate and graduate degree in pharmacy and Hospital Pharmacy. She also received her degree in medicine from the U. of M. Dr. McCormick interned at St. Joseph Mercy Hospital in Ann Arbor. She completed her residency in Family Practice at St. Joseph Hospital in Flint.

Dr. McCormick, her husband and their two children reside in Chelsea.

Dr. Brady is a 29-year-old physician in family practice at the University of Virginia. Dr. Paula Kim completed her undergraduate work at the University of Rochester. She recently graduated from a three-year program in Family Medicine from the Oakwood Hospital Family Practice Residency in Dearborn.

Dr. Brady spent two years in the Public Health Service near Syracuse, N.Y.

A graduate in medicine from the University of Virginia, Dr. Paula Kim completed her undergraduate work at the University of Rochester. She recently graduated from a three-year program in Family Medicine from the Oakwood Hospital Family Practice Residency in Dearborn.

College Bound Juniors Reminded of PSAT Tests

Juniors at Chelsea High school who are college bound, or think they may be, are reminded of the PSAT and NMST tests to be administered at the high school Oct. 21.

According to counselor George Bergman, students may register at the main office next week. Fee for the tests is \$2.50.

At the time they register students will receive a bulletin and sample test.

Bergman noted that the purpose of the PSAT is to prepare students for the SAT to be taken in the spring prior to or early in their senior year.

Bergman also said that juniors who wish to qualify for the State of Michigan Competitive scholarships will be advised to take ACT tests in April or the summer preceding their senior year. ACT tests will also be given in October for seniors who did not have the opportunity to take them earlier.

Saturday, Oct. 18 is the date set for registered seniors to take the ACT test. Chelsea High school has been chosen a testing center. Registered students are requested to report to the cafeteria promptly at 8 a.m.

PUT YOUR BEST FEET FORWARD WITH A HAGGAR® SLACKS AND TOP COMBINATION.

Haggar® slacks and Haggar tops are designed to go together beautifully. The slacks come in a variety of fabrics in plaids, checks and solids that match and contrast with the tops like they were made for each other. (They were.)

And the tops feature a wide choice of solid colors in distinctive styles. But possibly the best thing about a Haggar slacks and top combination is the price.

It won't cost you an arm and a leg to look great from top to bottom.

Both under \$50 Slacks, \$14 to \$20
Tops, \$20 to \$25



STRIETER'S MEN'S WEAR

"The Place To Go for Brands You Know"

RICK'S MARKET

Just North of Chelsea on M-52 "The Friendly Store" Phone 475-2898

HEINZ
TOMATO KETCHUP ... 32-Oz. Bottle 89¢

HI-C
FRUIT DRINKS ... 46-Oz. Can 49¢

GREEN GIANT
NIBLETS CORN ... 12-Oz. Can 39¢

GREEN GIANT WHOLE OR FRENCH STYLE
GREEN BEANS ... 16-Oz. Can 35¢

THE ORIGINAL PANCAKE & WAFFLE MIX
AUNT JEMIMA ... 4 1/2-Lb. Box \$1.45

THE FOOD WAKER-UPPER
ACCENT ... 10-Oz. Box \$2.19

NORTHERN 2-PLY
BATHROOM TISSUE ... 225 Sq. Ft. 400 Sheet Rolls 4 Roll Pkg. 61¢

FRIDAY ONLY SPECIAL

25-LB. BAG
PURINA DOG FOOD . \$5.39

(LIMIT—1 per customer)

Ads
Taken
111 p.m.
Tuesday

Advertise the Action Way! The Want Ad Way!

Just
Phone
475-1371

WANT ADS

The Chelsea Standard

WANT AD RATES

PAID IN ADVANCE—All regular advertisements, 10 cents for 25 words or less, each insertion. Count each line as 10 words. Two more than 25 words add 3 cents per word for each insertion. "Blind" ads or box numbers add 25¢ extra per insertion.

CHARGE RATES—Same as cash in advance, with 25 cents bookkeeping charge if not paid before 1 p.m. Tuesday preceding publication. Pay in advance, send cash or stamps and save 25 cents.

DISPLAY WANT ADS—Rate \$1.40 per column inch, single column, width only 6-point and 14-point light type only. No borders or boldface type. Minimum 1 inch.

CARDS OF THANKS or MEMORIALS—Single paragraph style, \$1.30 per insertion for 25 words or less; 3 cents per word beyond 25 words.

COPY DEADLINE—1 p.m. Tuesday week of publication.

HALLOWEEN PUMPKINS, apples, Delicious, Jonathans and McIntosh. Potatoes, squash and cabbage by the bushel. 1 mile north of Chelsea, corner of Waterloo and Werkner Rd. Open Friday, Saturday and Sunday. Isadore Wencel. -x17

REAL ESTATE

OLD TOWN HALL building in village of Waterloo. \$5,000.

ON 5 1/2 ACRES—L-shaped, 3-bedroom home, fully carpeted, walk-out basement, only 2 years old. Gregory schools. \$34,500.

10 ACRES—20 minutes from Chelsea, \$11,500 cash or land contract, with low down payment.

ATTRACTIVE 2-bedroom with lake access, new gas heating system, new roof, newly decorated. \$29,900.

14 ACRES, heavily wooded, Webster township, 3 miles to US-23. Dexter schools. \$16,500. 7 1/2% land contract.

2 ACRES—Lyndon township, surveyed and perc. approved. Chelsea schools. \$8,500.

10 ACRES wooded, 546-foot road frontage, 4 1/2 well on property. 15 min. to Chelsea. Waterloo township. \$15,000. Land contract terms possible.

2-ACRE beautiful building site with trees. Waterloo township. \$7,000. Land contract terms possible.

10 ACRES with scenic view. Flowing creek connects two lakes, near state land. \$15,000.

WE NEED a 40- to 200-acre farm with or without buildings in Dexter, Chelsea, Manchester, Grass Lake, Stockbridge area.

WATERLOO REALTY

355 Clear Lake

JOANN WARYWODA, BROKER

Phone 475-8674

Evenings:
Sue Lewie, 475-2877
Paul Erickson, 475-1748

SEAMSTRESS—Will do construction of men's and women's clothing, alterations, draperies, tablecloths, etc. Call Kathy, 475-9363. -x17

Closing Estate Sale

Beautiful glassware, antiques, collector's items, etc. Oct. 10-11, 3337 Central, Dexter, 10 to 4.

1975 MONTE CARLO Landau—GM employee's car, loaded. Sticker price \$6,478. Asking \$4,995. After 6 p.m. weekdays call Gregory 1-313-498-2788. -x17

WANT ADS

PATCHING AND PLASTERING
Call 475-7489. -x317

CLOGGED

SEWER

Reynolds Sewer Service

We Clean Sewers Without Digging
Drains Cleaned Electrically

FREE ESTIMATES

2-YEAR GUARANTEE
Phone Ann Arbor NO 3-2277
"Sewer Cleaning Is Our Business—Not a Sideshow" -x381

A & K MOWER SERVICE—All types of small motor repair. Chain saws, rider mowers, rotary mowers. Free pick-up and delivery. Ph. 475-2823. -x30

C—Custom Built Homes

O—h! We Remodel too

U—can count on us

N—o Job Too Small

T—rim Inside & Out

R—ough-in Only If

Y—ou Want To Finish

S—iding Aluminum, 5" Gutters

I—mmediate Attention

D—ALE COOK & CO.

E—stimates, Free

BUILDERS

Please Call

475-8863

DALE COOK

BOB'S LOCK & KEY
Complete Locksmithing Service
Commercial, Residential,
Automotive
Luggage locks repaired.
475-9071 -x117

GEORGE W. SWEENEY

HEATING

Licensed Contractor
Furnaces, air conditioning,
and sheet metal work.

Phone 475-1867

CAR RENTAL

by the day, week,
end, week or month. Full insurance
coverage, low rates. Call
Lyle Christwell at Palmer Motor
Sales, 475-1301. -x217

J. R. CARRUTHERS

LICENSED
RESIDENTIAL BUILDER

CUSTOM HOMES
ADDITIONS/FIREPLACES
PATIO

ROOFING/SIDING/REPAIRS

475-7234

CHELSEA

FOR RENT—4,300 sq. ft. office and warehouse with loading dock. Paved off-street parking. In Dexter. Call 426-4002 after 6 p.m., or week-ends. -x121

WANT ADS

LEONARD REITH

Master Plumber

Licensed Electrician

Hot Water Heat

18238 N. Territorial

Rd.

Chelsea, Mich. 48118

Phone: 475-2044

All Insurance Needs

In the convenience of your own home — or mine

N. H. Miles, Allstate

Call GR 5-8334 after 5 p.m. -x35

Real Estate One Of Washtenaw

1196 M-52
Chelsea, Mich. 48118
We Make Things Simpler For You!

2 LOTS for the price of 1, overlooking quiet, peaceful Sweezy Lake. No problem with perk. Close to black-top roads. Easy driving to Ann Arbor or Jackson. Both lots only \$5,000.

COUNTRY LIVING with urban convenience. This cozy home on a paved road has been wired and offers many extras. Well priced at \$39,950.

LAKEFRONT HIDE-AWAY — Located in the seclusion of Waterloo Recreation Area. This fully treed, 1/2 acre is a steal at \$36,500.

DREAM by your own fireplace — and enjoy this versatile family room, 3 bedrooms, 1 1/2 baths, 2 1/2-car garage and full basement. Lake access to Portage Lake. Quality thru-out. Sodded yard. \$47,500.

RAISIN RIVER FRONTAGE—385 ft., near Manchester, 13.7 acres. Beautiful rural setting. Land contract terms. \$18,000.

DAYS - 475-8863

Evenings:
Jack Edgington, Manager 426-2592
Evelyn White 475-7551
Aileen Zsenyuk 428-7824
Ted Picklesimer 475-8174
Jerry Steen 971-1759
Joe O'Connor 994-1223
Steve Flint 475-1423 -x17

Just Arrived!

HOLLAND BULBS

—TULIPS

—HYACINTHS

—DAFFODIL

—CROCUS

—ANEMONE

Plant now for spring blooms.

Chelsea Hardware

Ph. 475-1121

HOUSE FOR SALE by owner—4 bedroom ranch, family room, 2 baths, full basement, 3 years old. Ph. 475-1791. -x147

YES

WE ARE MAKING
LONG TERM FARM
REAL ESTATE
LOANS

SEE US

Federal
LAND BANK
Association

P. O. Box 7006
Ph. 769-2411 3645 Jackson Rd.
Ann Arbor, Mich. 48103

WANT ADS

FOR RENT—Fair Service Center for meetings, parties, wedding receptions, etc. Weekdays or week-ends. Contact John Wehnitz, phone 475-1518. -x317

Headquarters for

RED WING WORK SHOES

Foster's Men's Wear

TRUCK DRIVER—No experience necessary. We train. Excellent salary and benefits. Guaranteed job training for only 3-year enlistment with U.S. Army. Call 665-3731 for appointment today. -x19

Special of the Week

1974 OLDS DELTA 88 ROYALE
4-dr. hardtop (air cond.)
22,000 miles

\$3995

USED CARS

1975 BUICK Electra 225 2-dr. hardtop, air cond., 4,200 miles \$5795

1975 CHEVROLET 1/2-ton pickup, 4-wheel drive, with snow plow \$5700

1975 OLDS Vista Cruiser wagon, 3-seat, air cond. \$5095

1975 OLDS Omega 2-dr. sedan, 1,600 miles \$3495

1974 OLDS Cutlass 4-dr. sedan, air cond. \$3595

1974 OLDS Cutlass 4-dr. sedan, air cond. \$3595

1972 PONTIAC Firebird 2-dr. hardtop, air cond. \$2995

1972 BUICK Electra 225 2-dr. hardtop, air cond. \$2495

1972 PONTIAC Catalina 4-dr. sedan, air cond. \$1895

1972 FORD Pinto Runabout, automatic \$1595

1971 PONTIAC Catalina 2-dr. hardtop, air cond. \$1695

1971 CHRYSLER Newport Royale 4-dr. sedan \$1395

1971 FORD LTD 2-dr. hardtop, air cond. \$1295

1970 BUICK Electra 225 4-dr. hardtop, air cond. \$1395

1969 OLDS Cutlass 4-dr. sedan, air cond. \$1295

1969 BUICK LeSabre 4-dr. sedan, air cond. \$895

1969 BUICK Skylark 4-dr. sedan, air cond. \$895

1966 BUICK LeSabre 4-dr. sedan \$195

1964 BUICK LeSabre 4-dr. sedan, 49,000 miles \$195

Mon. - Tues. - Wed. - Fri. 8:00-5:30
Thurs. 8:00-9:00
Sat. 8:00-1:00

CHELSEA

COUNTRY LIVING—4 bedrooms, beautiful stone fireplace, family room, barn, 2 miles from I-94, 3 acres. More land available. \$54,900.

ALL BRICK—Ranch home, 1.5 acres, Chelsea schools. 1,850 sq. ft. Fireplace, family room, dining room, 2-car attached garage. 15 minutes to Ann Arbor. \$48,900.

LAKEFRONT — Ideal starter home. Half Moon Lake, \$23,900. Also lakefront, 3-bedroom, \$29,900.

23 ACRES — Northwest corner Baker Road & Marshall Road, ideal location, 1/4 mile off I-94, small house. \$51,900.

4-BEDROOM brick colonial, 1 1/2 acres, Dexter schools. Family room, fireplace. \$49,900.

10 ACRES — Beautiful brick ranch home with many extras, central air, Jen-Air bar-b-q. Dexter schools. \$69,500.

CHELSEA—\$10,000, 4-room home. EASY TO I-94 and Village of Chelsea, 2-bedroom home, excellent interior. \$32,900.

COUNTRY SETTING — Quality, 3-bedroom on wooded 1-plus acre lot, lake access, Chelsea schools.

PICTURESQUE SETTING—Large older home to restore. Ideal for horses, barns, outbuildings, 26 acres, excellent location.

FRISINGER REALTORS

Chelsea 475-8681

Evenings:
Herman Koenn 475-2613
Bob Koch 428-4784
Toby Peterson 475-2718
Hope Bushnell 475-7180
Burke Fitzgerald 878-0903
Paul Frisinger 475-2621
George Frisinger 475-2903 -x171

WANT ADS

Fireplace Builder

Field stone mason, block and brick mason, tuck pointing.
FREE ESTIMATES
Call 475-8025 after 3 p.m.

Patrick Grammatico

Windows Repaired

Plexiglass for door panels.

Chelsea Hardware

Phone 475-1121

THORNTON

LUXURY RANCH—This beautifully decorated 3-bedroom home features family room, fireplace, 2 1/2 baths, 5-in-1 furnace (air conditioning), 1st floor laundry. Full basement and 2 1/2-car garage. On almost 3 acres. Easy access to Ann Arbor.

10 ACRES—Large 5-bedroom frame home in Chelsea schools. 2-car garage plus outbuildings and horse barn on property.

INVERNESS COMMUNITY—Pleasant family home with 4 bedrooms and 2 full baths. Extra large living area with fireplace. Enclosed porch and large deck. Golf and swimming. Upper \$40's.

16 ACRES—Small farm near town perfect for part-time farmer. Large and comfortable Dutch Colonial, 4 bedrooms, in good condition. Plus barn and workshop. Property adjoins state land.

RENOVATIONS are needed to restore this magnificent old home. A unique opportunity. Extra spacious living areas with 2 fireplaces plus 7 bedrooms. Call for details.

VACANT LAND

3 ACRES — High rolling land. Beautiful building sites near Village of Chelsea.

1 ACRE — Building lots available in North Lake Farm.

40 ACRES—Rolling, backs up to state land. Can be split.

2 1/2 ACRES — Excellent sites in Waterloo Township priced from \$6,000.

15 ACRES—Must sell immediately. Chelsea schools.

ROBERT H.

THORNTON

JR. PC
REALTOR

CHELSEA 475-8628
Chuck Walters 475-2808
Peg Hamilton 475-1870
Dolly Alber 475-2801
Helen Lancaster 475-1198
Mark McKernan 475-8424 -x17

Pickup Caps & Covers

For all makes and models. Standard and custom-designed. From \$147.00. Free brochure.

PIONEER COACH MANUFACTURING CO.

3496 Pontiac Trail
Ann Arbor, 688-6785 -x421

Norwood Realtors

30519 Ford Rd.
Garden City, Mich. 48135

BEST OF CHELSEA — 4-bedroom Cape Cod, attached 2-car garage, spacious kitchen with built-ins, 100'x200' lot, walk to schools. \$48,500. Land contract at 8 1/2%. Won't last. Call Norwood, 1-522-2900. -x17

APPLES — McIntosh, Jonathon, Golden Delicious, Snows. Sweet cider, gourds, Indian corn. Come out and browse. Peterson's orchards, Bruin Lake, Bartell at Hadley Rds. Closed Mondays. -x17

MAUSOLEUMS ★ MONUMENTS
BRONZE TABLETS ★ MARKERS

BECKER MEMORIALS

6033 Jackson Road
ANN ARBOR, MICHIGAN

WANT ADS

GAR-NETT'S

Flower & Gift Shop

Your Friendly Florist
112 E. Middle St., Chelsea
PHONE 475-1400

Funeral Flowers

Wedding Flowers
Cut Flowers (arranged or boxed)
Potted Flowering Plants
Green Plants - Corsages
WE DELIVER -x91

DEMO

75 DODGE Coronet Custom 4-dr., 360, auto., p.s., p.b., air cond., AM-FM, speed control, radials. -SAVE! -x91

Driver Training Cars

75 VALIANT Custom 4-dr., 225, auto., p.s., p.b., AM-FM, radials. -SAVE! -x91

75 DART Custom 4-dr., 225, auto., p.s., p.b. -SAVE! -x91

Quality Used Cars

74 DODGE D-200 pickup, 318, auto., p.b., AM-FM, cover, 13,000 miles. \$3595

74 FORD F-250 pickup, 6-cyl., 4-speed, AM radio \$2995

74 CHALLENGER 318, auto., p.s., p.b., rallye wheels \$3295

73 DODGE D-200 pickup, 360, auto., p.s., p.b., AM-FM, buckets, dual tanks \$1695

73 VEGA GT, 4-speed, AM-FM \$1695

73 CHARGER SE, 318, auto., p.s., p.b., air cond., AM-FM, radials \$3195

73 BUICK Century 2-dr. V-8, auto., p.s., p.b., air cond., AM-FM \$2695

72 FORD Custom Club Wagon, V-8, auto., p.s., p.b., 12-pass. \$1995

72 COUGAR 2-dr. hardtop, 351, auto., p.s., p.b., air cond., AM-FM stereo \$2195

72 COLT coupe, 1600 cc., auto., very clean \$1695

72 FORD Gran Torino, 4-dr., 351, auto., p.s., p.b., air cond., \$1795

12-ft. MIDWEST flatbed truck body \$250

9 1/2-ft. FLATBED truck body \$225

71 MERCURY Monterey station wagon, V-8, auto., p.s., p.b. \$995

68 PONTIAC Catalina 4-dr., V-8, auto., p.s., p.b. \$595

WANT ADS

— YOUNG —

We list and sell lake, country and town properties. Eugene Young, Real Estate & Builder, 878-3782, 11506 Dexter-Pinckney Rd., Pinckney 48169. x34tf

CARPENTER WORK — Inside or out. Mr. Coburn, 475-2893. 12tf

TRENCHING

Water line or electric
Phone 475-7978

51tf

COMPLETE ALUMINUM SERVICE

Siding - Awnings - Repairs
Gutters - Storm Windows
Remodeling

Free Estimates

Call 475-9209

Camelot Construction
Chelsea, Mich. x12tf

CUSTOM BUILDING

LICENSED & INSURED
FREE ESTIMATES
TOTAL CONSTRUCTION SERVICES

— Residential, commercial and industrial.
— Garages
— Remodeling - Additions
— Aluminum Siding
— Roofing
— Trenching

SLOCUM CONTRACTORS & BUILDERS

Serving Washtenaw County
For Over 20 years
20700 OLD US-12
CHELSEA
Phone 475-8321 or 475-7811

2tf

CUT FOOD COSTS

Grow your own fruit on Stark Bros. trees.
Reserve stock now for spring mail delivery.

Elson Bettner
15700 Cassidy Rd.
475-9223

15tf

ARE YOU FED-UP with Winter? Join your friends already in Florida. For Sale (Adult Park) 24'x54' Mobile Home including raised porch with storms and screens. For full details contact Bill Blass, 237 Timberlane Dr., Palm Harbor, Fla. 33565. x19

DYNE-O-MITE, that's what you'll say about the new Snow Jet snowblowers. With their new performance clutch and sonic tuned exhaust, Snow Jet will come up to your specs. Come see the Big Blue at Hanco Sports Center, 15801 Seymour Rd., Waterloo. Ph. 475-7212. 17

WANT ADS

FOR REAL DOLLAR SAVINGS be sure and see us before you buy any new or used car. Palmer Motor Sales, Inc. Your Ford Dealer to rover 60 years. 2tf

FOR SALE — Indian cents, postcards, books, foreign coins, Australian opals, and other articles. Lawrence E. Guinan, 1571 Sugar Loaf Lake. Call 475-2317. -37tf

WEDDING STATIONERY — Prospective brides are invited to see our complete line of invitations and accessories. The Chelsea Standard, Ph. 475-1371. 8tf

Complete Body Repair Service

Bumping - Painting
Windshield and Side Glass Replacement

Free Pick-up & Delivery
Open Monday Until 9

CONTACT DON KNOLL
FOR FREE ESTIMATE

Village Motor Sales, Inc.
IMPERIAL - CHRYSLER
DODGE - PLYMOUTH
Phone 475-8661

1185 Manchester Rd., Chelsea
Hours: 8 a.m. to 6 p.m.
Tues. thru Fri. Until 9 Monday.
9 a.m. to 1 p.m. Saturday

x40tf

GUTTERS

SEAMLESS aluminum eaves-troughs installed. White and brown. Call Wilson Metal Shop, Manchester, 428-8488. x8tf

McCulloch

Portable Generators
Chain Saws

WE SELL SERVICE,
SHARPEN AND TRADE.

Chelsea Hardware

21tf

VACUUM CLEANERS

Authorized Electrolux
sales and service.

James Cox
428-2931, or 428-8688
118 Riverside Dr., Manchester

48tf

CONSTRUCTION TRAINEE — No experience needed, we train. Excellent salary and benefits. Guaranteed job training for only 3-year enlistment with the U. S. Army. Call 665-3731 for appointment to day. 21

Owner Says Sell!!

4-ROOM RANCH, 2 bedrooms. Nice lot, 60'x171'. Only \$10,600. Make an offer.

Call

Burke Fitzgerald
Office 475-8681 - Res. 878-6603
Representing

Frisinger Realtors

x14tf

FREE — One-half Himalayan kittens, litter trained, free to good homes. Ph. 475-8122. x17

WANT ADS

NOW

Full Time
Complete
Body Shop
Service

Stop in For An Estimate

PALMER FORD

222 S. Main St.
475-1301

27tf

PIANO TUNING, Chelsea and area. Facilities for reconditioning and rebuilding. Used piano sales; reconditioned grand and verticals. E. Ecklund, 428-4429. x50tf

SEE US for transit mixed concrete. Klumpke Bros. Gravel Co. Phone Chelsea 475-2530, 4920 Loveland Rd., Grass Lake, Mich. x40tf

TRAVEL TRAILERS — 13-ft. and up, 10x65 ft. trailers. John R. Jones Trailer Sales, Gregory, Mich. Phone 498-2655. 48tf

ELECTRICAL WIRING of all types New and rewiring. Ph. 428-4855. x20tf

FOR RENT — American Legion Hall. \$50. Call 475-1824. 40tf

Automotive Rust Proofing Cars and Trucks

Village Motor Sales, Inc.
IMPERIAL - CHRYSLER
DODGE - PLYMOUTH
Phone 475-8661

1185 Manchester Rd., Chelsea
Hours: 8 a.m. to 6 p.m.
Tues. thru Fri. Until 9 Monday.
9 a.m. to 1 p.m. Saturday

CHELSEA 3-bedroom Ranch, 2 baths, sunken living room, family room with bar, located on Howard Rd. \$49,900. For an appointment call 475-7643. 51tf

WANTED — Refrigerators and freezers. Working or not working. I'll be happy to haul if you will call. Ph. 475-7161. -17

PIANO LESSONS in your home. Master's degree. Theory, ear-training available. Program varied to student. 662-5850 before 11 a.m. -19

PIANO LESSONS — Experienced piano teacher in the village of Chelsea. Ph. 475-7084. 16tf

WILL DO BABYSITTING in my home. Any age. Please call 475-8331. 16tf

FOR SALE — New Centennial Winchester 30-30, \$140. New lawn tractor, 8 h.p., sacrifice, \$400. 475-9207. -17

REGISTERED MORGAN weanling colt, nice 4-H prospect or children's pleasure horse. Call 475-2154 persistently. x18tf

WAITRESS WANTED

Full or part-time.
Apply in person.

CHELSEA LANES

1180 M-52, Chelsea

ATTENTION LADIES — Work with the oldest Toy & Gift Party Plan in the Country — our 28th year! 20 percent Commission — PLUS Bonus! No Collecting — No Delivering — NO INVESTMENT! Car necessary! Call today! 1. (203) 673-3455, or write Santa's Parties, Avon, Conn. 06001. Also Booking Parties. x18

FARM ITEMS

HEAVY HORSE OATS
\$6.95 cwt.

SPECIAL PRICE ON
DRI MOLASSES
\$139.00 per ton

NEW STEER FEED — \$7.45 cwt.

Cole's
Elevator Co. Inc.
GREGORY
Phone 498-2735

WELL KEPT carpets show the results of regular Blue Lustre spot cleaning. Rent electric shampooer, \$1. Chelsea Hardware. -17

JUST SLIGHTLY more than fantastic, that's the new Alouette snowmobiles. Powered by the new liquid cooled engines that give you power and dependability. Come see the new liquid cooled Alouettes. Hanco Sports Center, 15801 Seymour Rd., Waterloo. Ph. 475-7212. 17

GARAGE SALE — 13400 E. Old US-12, Fri. 9-7 Sat. 9-2, Sun. 12-? Oct. 11-12-13. Winger washer, baby crib and mattress, walker, children's and adult's clothing, wedding dress (never worn), and many other items. 17

CARPENTERING REMODELING

ALUMINUM SIDING - KITCHENS PATIOS - GARAGES
PHONE 475-7474

CHARLES ROMINE
Licensed Contractor
18027 Old US-12
Chelsea

WANT ADS

SEAMLESS ALUMINUM eaves-troughs, roofing, siding, and carpentry work of all kinds. Experienced installers. All work guaranteed. For free estimate, call R. D. Kleinschmidt Co., 428-2858. x31tf

KETO USED CARS

8020 GRAND - DEXTER
426-4535

CARS BOUGHT AND SOLD

x38tf

A fine selection of

New and Used Cars

for immediate delivery

Harper Pontiac
Sales & Service

475-1306
Evenings, 475-1608

MUNITH AUCTION — 100 Main St., Munith, Mich. Auction every Sunday, 6 p.m. Danny Fleming, auctioneer. x12tf

STOCKBRIDGE, 13 acres, commercial, on M-52. (517) 851-8144. 35tf

D&G Allen Excavating

Septic Tanks and Drainfields
Back Hoe and Dozing

Sand, Gravel and Topsoil Hauled
Phone (517) 851-8398
or (517) 851-8278

43tf

BRICK MASON — Brick work, block work, fireplaces, chimney repairs, homes and additions. Ph. 475-2584. x44tf

1965 OLDS 98 — Air cond., power windows, p.s., p.b., electric seat, good tires, plus 2 snow tires. \$200 or best offer. Ph. 662-0524. x9tf

WANTED — Interior-exterior painting, \$5.50 per hr. or by job. Guarantee all work. Ph. 871-5751. x50tf

PAINTING — Exterior and interior. Quality workmanship, free estimates, references, reasonable rates. Ph. (517) 851-7055. x48tf

FOR REMODELING, roofing, pole barns, call Dan Hughes, 944-9350. 42tf

42tf

TRAP SHOOT

at the
Chelsea
Rod & Gun Club

Trap Range

9 a.m. to 1 p.m.

Every Sunday

Will open at special times
for clubs and organizations.

Public Welcome

x18

BABYSITTING done in my home. Nights preferred. Ph. 475-9353. 13tf

WANTED — Antique oak bedroom furniture. Ph. after 6 p.m., 475-7732. x17

GERMAN SHORTHAIK POINTER pups, 7 weeks old, AKC field champion lines. Ph. 434-3075. x17

FOR RENT — Available now in Chelsea, 3-bedroom, immaculate home, 2 1/2 baths, central air, fireplace, 2-car garage. \$385 per month plus \$385 security deposit. Fastidious family only. Call 475-8456. -x17

CHILD CARE available during the day. By day or week. Facilities for any age child. Ph. 475-8353. x10tf

MOBILE HOME SPACE for rent in Chelsea. For medium or small size trailers. Convenient location. Ph. 1-474-8552. x19

WANT ADS

NEED A ROOF? Call Toth Building & Remodeling, (313) 498-2178. 41tf

CAR & TRUCK LEASING. For details see Lyle Christwell at Palmer Motor Sales. 475-1301. 49tf

BUILDERS — House and barn roofing, all types of roof repairs, aluminum storm windows and doors, aluminum siding and gutters, awnings, porches, patios, garage and room additions, cement work. Call Joe Hayes for free estimates, Manchester 428-8520. x16tf

MANAGERS NEEDED to replace managers who won't work. Send summary of interest and experience. A & N Associates, P.O. Box 41, Chelsea. x48tf

Old Orchard Furniture Refinishing

ANTIQUES RESTORED

Old finish removed from wood or metal safely and economically.

513 Old Orchard
Stockbridge, Michigan 49285
(517) 851-8713

10tf

Manchester Area

NEW LISTING — 4-bedroom home on half acre in Manchester. Remodeled with new kitchen. Large rooms. Handy to all areas. \$37,500.

OLDER HOME — With eight bedrooms on five acres just three miles north of Clinton. Swimming pool and two barns included. Many possibilities for kids and horses! \$42,500.

ATTRACTIVE — 2-bedroom ranch with access to Pleasant Lake. Heated enclosed porch, nice winter and summer. Attached 2 1/2-car garage. Generous lot. \$33,900.

NINE ACRES PLUS a 3-bedroom ranch in the Manchester school area. Living room with fireplace, family room with fireplace, rec room, first floor laundry, walk-out lower level and attached 2 1/2-car garage. Semi-private lake in back. \$73,900.

3-BEDROOM CAPE COD — Maintenance free situated on a generous two acres just outside Manchester. Dining room, family room, and full basement. Completely carpeted. Attached 2 1/2-car garage. \$56,900.

OLDER BRICK HOME — In a nice area of Manchester. 4 bedrooms, 1 1/2 baths, carpeting and drapes, full basement and 2-car garage. Close to schools and downtown. \$41,900.

3-BEDROOM RANCH in Manchester. 1 1/2 baths, dining room, family room, full basement and garage. Convenient home, one year old. \$45,900.

CLASS AND CHARM are reflected in this lovely 4-bedroom home in Manchester. Study, 1 1/2 baths, dining room, family room, fireplace, full basement and 2-car garage. Large patio and enclosed porch.

ALMOST NEW custom built 3-bedroom home with family room and attached 2-car garage. Five acres and 30'x40' barn included. Ideal for horses. Edge of Manchester. \$48,500.

Spear & Assoc., Inc.
REALTORS
Manchester 428-8388

Maria Lehr..... 428-8182
Jim Mann..... 428-8074
Alice Pratt..... 428-8552

REMINGTON automatic shotgun, 12-gauge, model 1100. Almost new. Used trombone. Ph. 475-7951. 17

NEW RENT — 3-bedroom, lots of closets, fully carpeted, sun porch, in Stockbridge. \$180 per mo. Call 851-8077 or 851-8861 after 4 p.m. -17

2-BEDROOM APT. — Main St. location, downtown Chelsea. Ph. 475-1719. 17

FOR SALE — Sears garbage disposal. Call 475-8759 after 5 p.m. 19

ENGLISH SETTERS — American Field registered, seven months. Ph. 475-2817. 18

WANT ADS

REDUCE excess fluids with Fluidex. Lose weight with Der-A-Diet capsules. Chelsea Pharmacy. -18

'72 KAWASAKI 750-100 h.p., all fiberglass, Wurgess, alloy wheels, dual disc, very quick! 428-3188 after 4 p.m. x8tf

20 ACRES — Deer hunting between Grayling and Kalkaska. Borders State Forest. Beautifully wooded, nice deer herd, secluded. \$8,500 with \$1,000 down on 8 percent land contract. Call (616) 258-4873 or Write WILLOWOOD RETREATS, Route No. 1, Kalkaska, Michigan 49846. 20

WANTED TO RENT — Responsible couple wishes to rent a country farm home with outbuildings. Leave a message at 994-4309, ext. 101, Mr. Thomas. x17

FOR SALE — Tenor sax, Buscher Aristocrat, like new. Best offer. Ph. 475-8661. 13tf

HARDY MUMS — \$2.00, cash and carry. Chelsea Greenhouse. 7010 Lingane Rd. 17

WOOD BURNING FIREPLACES for sale. Ph. 475-1391. 18

BLACK SWAMP DIRT by the ton or yard, and backhoe work. Drain fields, basements dug. Driveways. Ph. 475-1963. -24tf

HELP WANTED — RN or LPN, first shift, Chelsea Methodist Home. Will consider part-time. Please call Mrs. Dehn, 475-8633. x17

FOR SALE — 5 1/4 acres in Sharon township. Ph. (517) 522-4465. x17

FINAL WEEK

— HURRY —

All New Furniture

Sofas from \$90. Sofa beds, \$79 and up. Upholstered chairs, regular \$79, now \$35. Sofa love seat and chair, \$185. Dinette set, 4 chairs and formica tables, \$30 each. New mattress and box springs (in wrappers) \$27.

BRING AD

FOR ADDITIONAL GIFT

Knights of Columbus
Hall

1915 Jackson Rd., Ann Arbor
Exit 94 at Jackson Rd.

Thursday and Friday, 11-8
Saturday, 10-8 - Sunday, 12-5

Bring trailer or truck
and save more!

x17

FOR RENT — Apts. in Chelsea, 2 bedroom and 1 bedroom. Phone 475-7696. 17

FOR SALE — Green bath fixtures, recessed tub, toilet, vanity with sink, medicine cabinet, \$50 for all. Ph. 475-1646. x17

FOR SALE — Dining room suit, 2 cane bottom chairs, breakfast set, dressing table. 13700 E. Mich. Grass Lake. 522-4405. -17

FOR RENT — Large 2nd floor apartment, conveniently located near downtown Grass Lake in nice residential section. Call after 6 p.m. (517) 522-4136. 18

OFFICE HELP — Part-time, downtown Chelsea. Prefer mature woman. Bookkeeping and typing. Please send resume to Box OC-9 care of Chelsea Standard, Chelsea. -17tf

FOR RENT — 1-bedroom home, 13990 N. Territorial. Ph. 475-1515. 17

SNOWBLOWER — Gilson 4 h.p., dual stage forward and reverse gears, 1975 model, used once. Original price, \$345, asking \$300. Ph. 475-7550. 17

FOR SALE — 1968 Chevrolet Impala station wagon, V-8, \$300. Runs good. Ph. (517) 522-4247. 18

FOR SALE — Youth bed, \$3; 5-panels white fiberglass drapes, \$5. Ph. 475-7047 evenings. x17

YARD SALE — 3 families, 9-5, Thursday, Friday, Saturday, Oct. 9, 10, 11. Dishes, clothing, rugs, misc. 10469 Hadley Rd. -17

GARAGE SALE — Pie face, pool table, chair, and much more, "junkie" 560 Chandler. Sunday only, 10 to 5, Oct. 12. 17

FOR SALE — '73 Corvette coupe, 350, 4-spd., p.s., p.b., AM-FM, with stereo 8-track, WSW, \$5,900. Ph. 475-7789. 17

HAVE A MOUSE OR TWO? We have the answer. Seven week old kittens, free. Both parents are good mousers. Kittens are used to being around children and dogs and are house trained. Call 475-1412. -17

RE-UPHOLSTERING done in my home. References available. Call after 3 p.m. Ph. 426-4312. x18

GARAGE SALE — Oct. 11, 12. Gas stove, firewood, bicycles, pool table, etc. 3556 Cushing Court, Dexter. Ph. 426-4526. x17

FOR SALE — Flute, Artley, excellent condition, \$100. 426-3257. x17

WANT ADS

FOR SALE — 8'x33" house trailer. Stove and refrigerator. Good condition. \$450. Ph. 498-2087. x18

POLE BUILDINGS by Huskee-Bilt Structures. Write or call Jan Warren, 916 W. Michigan, Ypsilanti 48197. Ph. 482-3934. x26

FOR SALE — AKC German shorthair pointers. Good pedigree. Call 682-3744 or 769-4887. x17

FOR SALE — Wooden trusses, solid oak, full 2x4 or 2x6 for barns, from 20-24 ft. wide, \$5 each. Cages, steel for rabbits or small animals in batteries of 3 to 10, \$2, \$3, and \$4 each. 426-4582. x17

AVON — I have an open territory nearby. It can be yours. Over 187! Call 682-5049. x17

FOR SALE — Gun cabinet, oak table and chairs, record cabinet, car carrier, also sofa (would trade for love seat). Ph. 475-1950. x17

RESPONSIBLE YOUNG COUPLE looking for house to rent in country. References. Ph. 475-9095. x17

APPLES — Red and Golden Delicious, Jonathan, Snow, 8485 Shield Rd. x17

FOR SALE — 12'x60' 3-bedroom Pioneer trailer with electric heat. Make offer. Ph. 426-2228. x17

GARAGE SALE — Boys' clothing, toys, household items. 9 to 12 Saturday only, Oct. 11, 3295 Central, Dexter. x17

WANTED — Band saw. Ph. after 6 p.m., 426-4211. x17

GOING OUT BUSINESS SALE — Rabbits, all ages and several breeds; cages, crocks, and tattoo kits. 12263 Grass Lake Rd. Call 517-522-8893 evenings. x17

WANTED — Job to care for elderly gentleman or lady in their home. Single woman. Ph. 475-1444. x18

71 NOVA 6 — Radial tires, undercoated, new carb, new valves. \$950. Ph. 475-7700. x17

GARAGE SALE — 4-family sale. Numerous miscellaneous items and winter clothing. 50 Chestnut Dr., Chelsea, Fri. and Sat., Oct. 10-11, 9 a.m. to 6 p.m. x17

Legal Notices

STATE OF MICHIGAN
In the Circuit Court for the County of Washtenaw

ORDER TO ANSWER
FILE NO. 75-16589-DO
BARBARA B. TOTH, Plaintiff
vs.
PHILIP J. TOTH, Defendant

At a session of said Court held in the Circuit Court Room in the Washtenaw County Building in the City of Ann Arbor, Michigan, on the 5 day of September, 1975.

Present: Honorable Edward D. Deake, Circuit Judge.

On this 5th day of September, 1975, an action was filed by Barbara B. Toth, Plaintiff against Philip J. Toth, Defendant in this Court to obtain a Judgment of Divorce.

It is HEREBY ORDERED that the Defendant, Philip J. Toth, shall answer or take such other action as may be permitted by law on or before the 16th day of Dec. 1975. Failure to comply with this Order will result in a Judgment of Default against said Defendant for the relief demanded in the Complaint filed in this Court.

Dated: September 2, 1975.
s/ EDWARD D. DEAKE, Circuit Judge
s/ JACK DULGEROFF, Attorney for Plaintiff.
Ann Arbor, Michigan 48108
683-1201. Sept. 8-25-Oct. 2-9

Legals

STATE OF MICHIGAN
In the Circuit Court for the County of Washtenaw

ORDER TO ANSWER
FILE NO. 75-16589-DO
BARBARA B. TOTH, Plaintiff
vs.
PHILIP J. TOTH, Defendant

At a session of said Court held in the Circuit Court Room in the Washtenaw County Building in the City of Ann Arbor, Michigan, on the 5 day of September, 1975.

Present: Honorable Edward D. Deake, Circuit Judge.

On this 5th day of September, 1975, an action was filed by Barbara B. Toth, Plaintiff against Philip J. Toth, Defendant in this Court to obtain a Judgment of Divorce.

It is HEREBY ORDERED that the Defendant, Philip J. Toth, shall answer or take such other action as may be permitted by law on or before the 16th day of Dec. 1975. Failure to comply with this Order will result in a Judgment of Default against said Defendant for the relief demanded in the Complaint filed in this Court.

Dated: September 2, 1975.
s/ EDWARD D. DEAKE, Circuit Judge
s/ JACK DULGEROFF, Attorney for Plaintiff.
Ann Arbor, Michigan 48108
683-1201. Sept. 8-25-Oct. 2-9

MORTGAGE SALE—Default has been made in the conditions of a mortgage made by LARRY A. LEONARD and SANDRA K. LEONARD, his wife, to COREY MORTGAGE CORPORATION, a Michigan corporation. Mortgages, Dated June 30, 1975, and recorded on July 3, 1975, in Liber 1360, page 754, Washtenaw County Records, Michigan, and assigned by said Mortgagee to Federal National Mortgage Association by an assignment dated July 30, 1975, and recorded on August 1, 1975, in Liber 1360, page 889, Washtenaw County Records, Michigan, on which mortgage there is claimed to be due at the date hereof a sum of TWENTY THOUSAND, FORTY SEVEN and 94/100 Dollars (\$20,047.94), including interest on said sum.

Under the power of sale contained in said mortgage and the statute in such case made and provided, notice is hereby given that said mortgage will be foreclosed by a sale of the mortgaged premises, or some part of them, at public vendue, at the Huron St. entrance to the Washtenaw County Building in Ann Arbor, Michigan, at 10:00 o'clock a.m. on the 15th day of November, 1975.

Said premises are situated in the Township of Ypsilanti, Washtenaw County, Michigan, and are described as:

Southeasterly 18.03' of Lot 294 and northwesterly 18.03' of Lot 295, both in the Township of Ypsilanti, Township, Washtenaw County, Michigan, according to the plat thereof as recorded in Liber 4 of Plans, Pages 21 and 22, Washtenaw County Records.

During the six months immediately following the sale, the property may be redeemed.

Dated: October 9, 1975.
FEDERAL NATIONAL MORTGAGE ASSOCIATION, Assignee of Mortgage
1475 Pershing Court, Detroit, Michigan 48226. Oct. 16-23-30-Nov. 6, 1975.

Gard of Thanks
We would like to express our thanks and sincere gratitude to our relatives, friends, and neighbors, for your kind expressions of sympathy shown us in the loss of our mother. The food that was brought in, the cards, flowers, and gifts, all this was deeply appreciated. A special thanks to pastor Hamilton for his comforting words and to the Burghardt Funeral Home.

The family of
Mrs. Maynard (Gracie) Case.

CARD OF THANKS
I wish to thank my friends, relatives, children and grandchildren for flowers, gifts and cards while I was in the hospital and on my return home.

Fred Klink, Sr.

THANK YOU
Thank you to all our relatives, friends and neighbors for your help and concern during the illness and loss of our father. A special thank you to Dr. Gillini and Dr. Waldeck and to all the nurses for the excellent care he received at Chelsea Community Hospital. Also to the Rev. Wood and Pastor Ratzlaff for their visits and prayers. We deeply appreciate all your kindness.

The family of
Herman Eisele

+ Services in Our Churches +

ST. THOMAS

EVANGELICAL LUTHERAN
Elsworth and Haab Rds.
The Rev. Jerome Dykstra, Pastor

Thursday, Oct. 9—
4:15 p.m.—Confirmation class.
8:00 p.m.—Choir rehearsal.

Sunday, Oct. 12—
9:30 a.m.—Sunday school and Bible class.

10:45 a.m.—Worship service.
Wednesday, Oct. 15—
10:00 a.m.—Bible study.

Thursday, Oct. 16—
4:15 p.m.—Confirmation class.
8:00 p.m.—Choir rehearsal.

ST. MARY CATHOLIC CHURCH
The Rev. Fr. David Philip Dupuis, Pastor

Mass Schedule:
Every Saturday—
4:00-5:00 p.m.—Confessions.

7:00 p.m.—Mass.
Immediately after 7 p.m. Mass—
Confession.

Every Sunday—
Winter schedule:
8:00, 10:00, 12:00 noon—Mass.

Summer schedule:
7:00, 9:00, 11:00 a.m.—Mass.

ST. BARNABAS
EPISCOPAL CHURCH
20550 Old US-12
The Rev. Fr. Jerrold F. Beaumont, B.S.P.

Every Sunday—
10:00 a.m.—Holy Communion
first, third and fifth Sundays, and
8 p.m. every Wednesday.

10:00 a.m.—Morning prayer. Second
and fourth Sundays; Church
and nursery every Sunday.

Every Wednesday—
9:00 p.m.—Study and discussion
groups.

First Wednesday of every month
Bishop's Committee.
Third Thursday of every month—
Episcopal church women.

FIRST CHURCH OF CHRIST
SCIENTIST
1883 Washtenaw Ave., Ann Arbor
Every Sunday—
10:30 a.m.—Sunday school, morning
service.

BAHA'I FIRESIDE
Every Thursday—
8:00 p.m.—At the home of Toby
Peterson, 705 S. Main St. Anyone
wishing to learn about the Baha'i
faith is welcome.

WATERLOO
FIRST UNITED METHODIST
Parks and Territorial Rds.
Every Sunday—
9:15 a.m.—Morning worship.
10:00 a.m.—Sunday school.

ST. JOHN'S
UNITED CHURCH OF CHRIST
Rogers Corners
The Rev. Carl Asher, Pastor
10:30 a.m.—Worship service.

Cards of Thanks
I wish to thank my friends, relatives, children and grandchildren for flowers, gifts and cards while I was in the hospital and on my return home.

Fred Klink, Sr.

THANK YOU
Thank you to all our relatives, friends and neighbors for your help and concern during the illness and loss of our father. A special thank you to Dr. Gillini and Dr. Waldeck and to all the nurses for the excellent care he received at Chelsea Community Hospital. Also to the Rev. Wood and Pastor Ratzlaff for their visits and prayers. We deeply appreciate all your kindness.

The family of
Herman Eisele

ZION LUTHERAN CHURCH

Corner of Fletcher, Waters Rds.
The Rev. John R. Morris, Pastor

Thursday, Oct. 9—
7:30 p.m.—Mid-month Bible study
at the home of Enderle.

Friday, Oct. 10—
Young adult hayride.
Saturday, Oct. 11—
8:00 a.m.—YI, 7th and 9th
grades.

10:45 a.m.—Junior choir.
Sunday, Sept. 12—
9:00 a.m.—Sunday school.

10:15 a.m.—Worship service.
Baptism and reception of new
members.

Monday, Oct. 13—
8:00 p.m.—Senior choir.
Tuesday, Oct. 14—
5:00 p.m.—Zion AA Sr. Citizens
here.

7:30 p.m.—Shuffleboard.
Wednesday, Oct. 15—
9:30 a.m.—H.R. Conference Pastors
at King of Kings, Ann Arbor.

Thursday, Oct. 16—
8:00 p.m.—SWCIM seminar on
"Death and Dying and The Promise"
at St. Johns in Bridge-
water.

ST. PAUL
UNITED CHURCH OF CHRIST
The Rev. R. J. Ratliff, Pastor

Thursday, Oct. 9—
3:00 p.m.—AAJ Association and
Executive Board meeting.

8:00 p.m.—Stewardship.
Friday, Oct. 10—
7:30 p.m.—Rothfuss-Parker re-
hearsal.

Saturday, Oct. 11—
9:00 a.m.—Eighth grade confir-
mation.

11:00 a.m.—Eleventh grade re-
hearsal.
6:00 p.m.—SYF Hayride.

7:30 p.m.—Rothfuss-Parker wed-
ding.
Sunday, Oct. 12—
9:00 a.m. and 10:30 a.m.—
Church school.

10:30 a.m.—Worship. Junior
high choir sings "D. Schnelder
guest speaker."

6:15 p.m.—JYF Hayride.
Tuesday, Oct. 14—
8:30 p.m.—Joyful noise.

7:30 p.m.—Spiritual Life.
Wednesday, Oct. 15—
1:00 p.m.—World Wide.

8:30 p.m.—Junior Choir.
8:00 p.m.—Chancel choir.
Thursday, Oct. 16—
7:30 p.m.—Sunday school teach-
ers.

IMMANUEL BIBLE CHURCH
145 E. Summit St.
The Rev. LeRoy Johnson, Pastor

Every Sunday—
9:45 a.m.—Sunday school, nursery
provided.

11:00 a.m.—Morning wor-
ship. Nursery provided.
7:00 p.m.—Evening worship.

Every Wednesday—
7:00 p.m.—Family hour, prayer
meeting, and Bible study.

CONGREGATIONAL CHURCH
(United Church of Christ)
The Rev. Carl Schwarm, Pastor

Sunday, Oct. 12—
9:00 a.m.—Confirmation.
10:30 a.m.—Sunday school and
worship.

FIRST UNITED

METHODIST CHURCH
The Rev. Clive Dickins, Pastor

Thursday, Oct. 9—
9:00 a.m.—United Methodist Women
Executive Committee meeting
at the home of Mrs. Joanne
Weber.

10:00 a.m.—United Methodist Re-
irement Home volunteers "get-
acquainted" meeting in the Crippen
Building.

Saturday, Oct. 11—
2:00 p.m.—Beeman-Draper wed-
ding.

Sunday, Oct. 12—
2:00 a.m.—Worship service.
Nursery provided.

10:30 a.m.—Church school. (four
years through the sixth grade).
11:00 a.m.—Coffee and punch hour.

11:15 a.m.—Junior-Senior and
Adult church school.
Monday, Oct. 13—
7:00 p.m.—Girl Scout Troop 169
Investiture service in the social
center of the church.

Wednesday, Oct. 15—
9:00 a.m.—Sarah Circle will
meet at the home of Mrs. Jean
Storey.

12:30 p.m.—Phoebe Circle will
meet for a pot-luck luncheon at
the Methodist Home.

1:00 p.m.—Ruth Circle will meet
in the Crippen building.

3:30 p.m.—Kinder choir.
4:00 p.m.—Glory choir.
4:30 p.m.—Praise choir.
8:00 p.m.—Chancel choir.

Thursday, Oct. 16—
9:00 a.m.—Elizabeth Circle will
meet for their Christmas workshop
at the home of Mrs. Neta Mills.

Bus transportation available: 428-
7222.

GREGORY BAPTIST CHURCH
The Rev. Paul White, Pastor

Every Sunday—
9:45 a.m.—Sunday school.
11:00 a.m.—Morning worship.

6:00 p.m.—Young people.
7:00 p.m.—Evening worship.
7:30 p.m.—Thursday mid-
week worship service.

SALEM GROVE
UNITED METHODIST CHURCH
3320 Notten Rd.
The Rev. Gerald R. Parker, Pastor

Every Sunday—
9:30 a.m.—Sunday school.
10:30 a.m.—Worship service.

NORTH LAKE
UNITED METHODIST CHURCH
The Rev. David Stiles, Pastor

Every Sunday—
8:30 a.m.—Early service.
10:00 a.m.—Worship service. Re-
ceiving of new members.

10:00 a.m.—Sunday school.

**BETHEL EVANGELICAL AND
REFORMED CHURCH**
(United Church of Christ)
Freedom Township
The Rev. Romah A. Reineck, Pastor

Every Sunday—
10:00 a.m.—Worship service.

WATERLOO VILLAGE

UNITED METHODIST CHURCH
815 Washington St.

Every Sunday—
11:15 a.m.—Worship service.

METHODIST HOME CHAPEL
Chaplain Ira Wood, Pastor

Every Sunday—
8:45 a.m.—Worship service.

FIRST UNITED
PRESBYTERIAN CHURCH
Unadilla

The Rev. T. H. Liang, Pastor

Every Sunday—
9:45 a.m.—Sunday school.
11:00 a.m.—Worship service.

FIRST ASSEMBLY OF GOD
The Rev. Thode B. Thodeson, Pastor

Every Sunday—
9:45 a.m.—Sunday school.
11:00 a.m.—Worship service.

NORTH SHARON BIBLE CHURCH
Sylvan and Washburne Rds.
The Rev. William Enslen, Pastor

Every Sunday—
10:00 a.m.—Sunday school.
(Nursery will be available.) Junior
church classes:

11:00 a.m.—Worship service.
6:00 p.m.—Senior High Youth
meeting. Youth Choir.

7:00 p.m.—Evening worship ser-
vices. (Nursery available.)
All services interpreted for the
deaf.

Every Wednesday—
7:00 p.m.—Bible study and pray-
er meeting. (Nursery available.)
Bus transportation available: 428-
7222.

CHURCH OF CHRIST
13861 Old US-12, East
Evangelist John M. Hamilton

Every Sunday—
10:00 a.m.—Church school.
11:00 a.m.—Worship service.

Nursery will be available.
6:00 p.m.—Worship service.
Every Wednesday—
7:30 p.m.—Bible study.

**ST. JOHN'S EVANGELICAL
AND REFORMED CHURCH**
(United Church of Christ)
Francisco

The Rev. Virgil King, Pastor.

Every Sunday—
10:30 a.m.—Worship service.
Sunday school.

CHELSEA BAPTIST CHURCH
377 Wilkinson St.
The Rev. James Stacey, Pastor

Every Sunday—
9:45 a.m.—Sunday school for the
whole family.

11:00 a.m.—Morning worship
service and children's church.

7:00 p.m.—Evening service, in-
formal singing, sharing, study and
discussion. (Nursery care provided
for all services.)
Home Bible Studies each week
in the homes of the leaders.
Teen Ministry, Sunday at 8 p.m.
and study groups during the week.

OUR SAVIOR LUTHERAN

CHURCH
1515 S. Main, Chelsea

The Rev. William H. Koster, Pastor

Thursday, Oct. 9—
7:30 p.m.—Choir.

Saturday, Oct. 11—
9:00 a.m.—10:45 a.m.—Confirma-
tion III.

Sunday, Oct. 12—
9:00 a.m.—Sunday school and
Bible classes.

10:30 a.m.—Worship service.

Tuesday, Oct. 14—
7:30 p.m.—Elders meeting.

Wednesday, Oct. 15—
4:00-6:00 p.m.—All Confirmation
classes meet.

ST. JACOB EVANGELICAL

LUTHERAN CHURCH
12501 Rietzinger Rd., Grass Lake

The Rev. Andrew Bloom, Pastor

Every Sunday—
9:00 a.m.—Worship service.

10:15 a.m.—Divine services.

**CHURCH OF JESUS CHRIST
OF LATTER-DAY SAINTS**
Meetings at
St. Barnabas Episcopal Church
20500 Old US-12

Every Sunday—
11:00 a.m.—Priesthood meeting.

12:30 p.m.—Sunday school.

5:30 p.m.—Sacrament meeting.

CUSTOM

BUMPING and PAINTING

FREE ESTIMATES - ALL MAKES

Get the Best for Less!

FRANK GROHS CHEVROLET

Phone 426-4677

Dexter, Mich.

CALL OR STOP IN

CHELSEA GLASS WORKS

WORKMANSHIP AND MATERIALS FULLY GUARANTEED.

Open Daily 8 a.m. to 5 p.m.; Sat., 8 a.m. to 1 p.m.

140 W. Middle, Chelsea

Phone (313) 475-8667

WE REPAIR AND REPLACE:

★ STORE FRONTS ★ MIRRORS
★ FURNITURE TOPS ★ PATIO DOORS
★ SHOWER DOORS ★ TUB ENCLOSURES
★ THERMOPANES ★
★ AUTO GLASS - Including Windshields
Free Pick-up and delivery on auto work.

Storm Door & Window Reglazing & Screens

COMMERCIAL BUILDINGS OR RESIDENTIAL

PROMPT SERVICE REASONABLE PRICES



BOWLING NEWS



Junior House

Standings as of Oct. 2

Dell's Paints	W	L
Boyer Automotive	27	8
Mac Tools	26	9
Chelsea Lanes	25	10
Dana Demons	24	11
3-D Sales & Service	24	11
Washenaw Engineering	21	14
Dana Maintenance	19	16
Jim Bradley Pontiac	18	17
Mark IV Lounge	17	18
Wolverine Bar	17	18
Smith's Service	16	19
Stocum Construction	14	21
Yost Asphalt Paving	11	24
Team No. 1	11	24
Rockwell International	9	26
Ann Arbor Kirby	5	30
Bush Cookies	4	31

600 series: F. Northrop, 654; T. Dittmar, 600.

525 or over: C. Dell, 535; R. Hinderer, 534; T. Steele, 544; S. Glazier, 540; L. Castle, 542; A. Sannes, 567; G. Beeman, 535; A. Fletcher, Jr., 572; D. Allen, 555; L. Salver, 557; D. Buku, 548; P. Clark, 539; E. Vassas, 525; O. Cavender, 537; P. Fletcher, 560.

210 or over: F. Northrop, 214; J. Kruso, 216; D. Clark, 222.

Charlie Brown & Snoopy Peanut League

Standings as of Oct. 4

Super Stars	W	L
Shoopies	6	0
Bowling Green	3	3
Pin Wheels	2	4
Bulldogs	2	4
Super Strikers	2	4

Games 70 and over: C. Schulze, 88; K. Nadeau, 106; 79; D. Collins, 98; P. Fletcher, 75; D. Thompson, 87; S. Cheever, 111; 103; J. Morgan, 96; 81; D. Settle, 109, 150; G. Bollinger, 83; J. Tobin, 113.

Series 100 and over: C. Schulze, 154; D. Collins, 117; K. Nadeau, 185; D. Peltch, 142; P. Fletcher, 122; D. Thompson, 107; J. Schaefer, 148; C. Bollinger, 167; C. Alexander, 102; L. Kaiser, 121; D. Popovich, 108; E. Brown, 131; S. Cheever, 214; J. Morgan, 177; D. Settle, 249; G. Bollinger, 140; J. Tobin, 184.

Chelsea Suburban

Standings as of Oct. 1

Waterloo Garage	30	5
Dancer's	24	11
State Farm	19	16
Mark IV Lounge	18	17
Frisinger Realty	18	17
Cavanaugh Lake Store	17	18
Chelsea State Bank	17	18
Chelsea Drug	16	19
Dairy Queen	16	19
Chelsea Assoc. Bldrs.	16	18
Dana Dee Lites	10	25
Fletcher Mobil	9	26
150 games and over: C. Stoffer,			
213, 182; A. Hocking, 190, 190, 190;			
F. Cole, 158, 158; A. Wood, 166;			
D. Worden, 152; D. McAllister,			
159, 181; K. Chapman, 155; V.			
Weber, 156; G. DeSmith, 164;			
N. Packard, 163; A. Coppemore,			
165; J. Burnett, 184; N. Collins,			
186, 190; S. Bowen, 177; P. Har-			
rook, 199; V. Stewart, 178; M.			
Neal, 152; T. Monroe, 177, 174;			
M. Usher, 182, 173, 158; J. Schulz-			
son, 184, 194; D. Vargo, 167; B. Rob-			
erson, 154; K. Snyder, 152; D. Sannes,			
157; R. Babbie, 197; M. DeLa-			
Torre, 175, 189.			
500 series and over: C. Stoffer,			
540; A. Hocking, 530; J. Schulz-			
517; M. Usher, 513.			
425 series & Over: F. Cole, 454			

500 series and over: C. Stoffer, 540; A. Hocking, 530; J. Schulze, 517; M. Usher, 513.

425 series & Over: F. Cole, 454; A. Wood, 430; D. McAllister, 479; G. DeSmith, 468; N. Collins, 433; J. Burnett, 467; N. Collins, 433; S. Bowen, 445; P. Harrook, 490; V. Stewart, 462; T. Monroe, 494; R. Babbie, 445; M. DeLaTorre, 493.

Leisure Time

Standings as of Oct. 2

<i>Leisure Time</i>		
Standings as of Oct. 2		
	W	L
Rug Rats	14	6
Sugar Loafers	14	6
Unpredictables	13	7
Four Stooges	12	8
Misfits	11	9
Slowpokes	10	10
Roadrunners	9	11
Lady Bugs	8	12
Holy Rollers	8	12
Highly Hopefuls	8	12
The Lakers	7	13
Crackpots	6	14
400 series and over: J. Hegadorn, 409; C. Engler, 418; D. Hafner, 426; E. Haycock, 447; S. Brown, 417; G. Tallman, 426; S. Centilli, 408; S. Friday, 417; V. Wheaton, 442; D. Dault, 458; A. VanderWard, 431; J. Staphis, 402; R. Farnier, 407; E. Heller, 403; W. Pratt, 413.		

Games 140 and over: J. Staphis, 141; R. Forner, 150; 143; E. Heller, 153; W. Pratt, 174; N. Primrose, 157; D. Traub, 163; 148, 144; A. VanderWard, 156; 143; J. Barkley, 140; M. Shears, 140; G. Tallman, 141, 141, 143; S. Centilli, 147, 147; D. Thompson, 143; S. Friday, 147, 155; V. Wheaton, 155, 155; P. Muncer, 140; M. R. Cook, 150; E. Swanson, 149; C. Kuron, 158; D. Hafner, 148, 143; E. Haycock, 154, 141, 152; J. Mull, 147; B. Tison, 156; J. Anderson, 141; J. Hegadorn, 179; C. Engler, 148, 147.

Chelsea Nite Owl League

Standings as of Oct. 6

Hanco Sports Center	W	L
McCalla Feeds	31	4
Southern Boy Take Out	24	11
Chelsea Finance	23	12
Steele's Heating & Cooling	21	14
Mich. Kitchen & Bathroom	21	14
Bollinger's Sanitation	20	15
Wahl's Oil	20	15
V.F.W. 4078	18	17
Norm's Body Shop	18	17
Ted's Standard	17	18
Associated Spring	16	19
LithoCrafters No. 1	14	21
Team No. 3	13	22
Cavanaugh Lake Store	12	23
LithoCrafters No. 2	8	27
LithoCrafters No. 3	7	28
Beiser's Construction	7	28

200 games and over: G. Ahrens, 233; J. Borders, 221; T. Steele, 200, 227; D. Wutke, 217.

500 series and over: C. Clouse, 501; F. Boyer, 543; A. Hawley, 511; D. Henry, 518; J. Richmond, 530; L. Suppl, 523; D. Wutke, 589; J. Elliott, 540; G. Ahrens, 583; F. Hill, 505; C. Staphis, 511.

600 series and over: J. Borders, 605; T. Steele, 608.

Kahuna Sunday Mixed

Standings as of Sept. 2

Golden Triangle	W	L
Foursomes	10	2
Spuds & Sads	9	3
Cladams	8	4
Young Century	8	4
Whiteleafs	7	5
Four on the Floor	7	5
Barflies	6 1/2	5 1/2
Unouchables	6	6
Bitter End	6	6
Menephunes	5	7
Moondoggies	5	7
Flying Dutchmen	4	8
Maybe's	4	8
Sunday Funnies	4	8
Four M's	2	10
Fox Fires	2	10

Women 400 series: K. Green, 461; E. Durrussell, 405; J. Schultz, 418; A. VanderWard, 438; J. Tobin, 443; M. Muller, 488; D. Graden, 476; R. Musbach, 437; E. Tindall, 402; N. Clark, 403; J. Buckingham, 413; M. Adams, 400.

Men, 500 series: G. White, 519; E. Greenleaf, 525; D. Du Russel, 523; L. Barkley, 531; H. VanderWard, 513; M. Robin, 520; M. Sweet, 537; C. Staphis, 500; D. Adams, 533.

Chelsea Women's Bowling Club

Standings as of Oct. 5

Parish's Cleaners	W	L
Palmer Ford	19	5
Washenaw Engineering	18	6
Thompson's Pizza	17	7
Chelsea Milling	16	8
Jiffy Mixes	15	9
Mark IV Lounge	13	11
Wolverine Bar	13	11
Norris Electric	13	11
Chelsea Grinding	11	13
Larry's Roadside Market	10 1/2	13 1/2
Lloyd Bridges Chevrolet	9	15
Niles' Amway	9	15
Rushing's Temp. Help	8	16
Klink Excavating	8	16
Joe & Judy's	8	16
Norm's Barber Shop	6	18
Glenn's Mobil	5 1/2	18 1/2

450 series and over: R. Hummel, 550; N. Packard, 537; D. Judson, 534; J. Norris, 532; E. Whitaker, 532; J. Stoll, 529; N. Kern, 523; P. Poertner, 512; A. Sindlinger, 509; D. Cozzens, 508; D. Alber, 504; J. Schleede, 503; J. Hafner, 493; P. Fitzsimmons, 458; A. Eisele, 465; D. Thompson, 459; C. Bradbury, 451; H. Morgan, 490; L. Alexander, 471; A. Fahrner, 476; M. Kozminski, 493; A. Judson, 488; D. Verwey, 469.

150 games and over: R. Hummel, 183, 188, 179; N. Packard, 156.

181, 200; D. Judson, 189, 199; J. Norris, 177, 200; E. Whitaker, 178, 200; J. Stoll, 154, 200, 108; N. Kern, 204, 188; P. Poertner, 190, 189, 153; A. Sindlinger, 167, 174, 188; D. Cozzens, 168, 193, 150; D. Alber, 157, 168, 183; J. Schleede, 169, 180, 158; D. Fouty, 159; Smith, 154; J. Alber, 153; J. Hafner, 159, 180, 154; P. Fitzsimmons, 153, 161; A. Eisele, 166, 154; T. Kenney, 157; M. Eder, 166; R. McGibney, 168; D. Thompson, 174; C. Fleischmann, 159; C. Bradbury, 171, 157; H. Morgan, 167, 202; L. Alexander, 157, 174; P. Devulder, 166; S. Zink, 161; L. Hafner, 170; B. Bush, 152; A. Fahrner, 161; 172; L. Niles, 151; D. Fortner, 154; B. Gross, 151; P. Norris, 151; B. Bridges, 157; M. Kozminski, 158; 188; A. Judson, 170; S. Robards, 155; D. Verwey, 151, 169; L. Behnke, 154; G. Kuhl, 163; M. Jacobinski, 178; K. McCalla, 166.

Women's Bowling Club

Standings as of Oct. 1

Palmer Ford	W	L
Parish's Cleaners	15	5
Washenaw Engineering	15	5
Jiffy Mixes	15	5
Thompson's Pizza	14	6
Chelsea Milling	13	7
Wolverine Bar	12	8
Norris Electric	12	8
Mark IV Lounge	9	11
Lloyd Bridges Chevrolet	9	11
Larry's Roadside Market	9	11
Chelsea Grinding	7	13
Rushing's Temp. Help	7	13
Klink Excavating	7	13
Norm's Barber Shop	6	14
Niles' Amway	6	14
Joe & Judy's	5	15
Glenn's Mobil	4	16

450 series and over: N. Packard, 598; D. Alber, 530; S. Klink, 518; J. Hafner, 507; C. Bradbury, 505; J. Rowe, 521; L. Hafner, 502; L. Orlovski, 499; P. Fitzsimmons, 480; P. Poertner, 473; B. Bush, 451; A. Fahrner, 459; R. Hummel, 467; J. Schleede, 452; D. Cozzens, 471; K. McCalla, 483; B. McGuire, 467; J. Norris, 462.

150 games and over: N. Packard, 198, 185, 203; D. Alber, 218, 166; J. Rowe, 179, 173, 189; S. Klink, 212, 184; J. Hafner, 162, 165, 180; C. Bradbury, 165, 166, 174; L. Hafner, 150, 202, 150; L. Niles, 175; J. Stoll, 169; A. Sindlinger, 156; P. Fitzsimmons, 159, 167, 154; P. Poertner, 137, 184; S. Settle, 150; M. Kruse, 163; S. Ringe, 178; A. Boham, 172, 151; B. Bush, 153; 170; A. Fahrner, 153, 179; J. Weir, 155; R. Hummel, 157, 185; P. Wurster, 158; N. Kern, 171; J. Schleede, 174; E. Whitaker, 167; G. Klink, 160; D. Fouty, 172; P. Dittmar, 163; L. Orlovski, 170, 154; 175; D. Cozzens, 159, 176; R. Whitaker, 167; S. Robards, 156; D. Verwey, 151; B. Gross, 190; C. Parsons, 152; M. Birely, 153, 156; S. McCalla, 163; K. McCalla, 171, 154, 158; J. Powell, 183; N. Rujia, 167; J. Merkel, 151; B. Bridges, 158; L. Behnke, 153; I. Fouty, 151; B. McGuire, 164, 179; J. Norris, 169.

Seven Point Mixed

Standings as of Sept. 30

Hi Hopes	W	L
The Foxes	27	8
ZAP	27	8
Dexter Gear	19	16
Strike Outs	18	17
Elliott & Sons	18	17
Bowling Wizards	17	18
Alley Runners	17	18
Flat Tires	15	20
River Rats	11	24
College Dodge	10	25

Men, 450 series and over: A. Hansen, 505; O. Inbody, 474; W. Teachworth, 458; G. Beeman, 595; F. Palacios, 443; D. Carpenter, 510; J. Fortner, 492; M. Fox, 522; R. Fox, 474.

Men, 160 games and over: A. Hansen, 172, 178; W. Teachworth, 209; O. Inbody, 178; F. Palacios, 167; D. Carpenter, 219; F. Fortner, 176, 179; G. Beeman, 220, 173; R. Fox, 170; M. Fox, 208, 163; F. Steers, 167.

Women, 425 series and over: M. Paul, 459; D. Dettling, 460; P. Fortner, 439; J. Ortring, 492; P. Elliott, 473; P. Norris, 468.

Powell, 489; L. Rettig, 427; P. Scherdt, 467; V. Guenther, 488; D. Beverly, 435.

Chelsea Lanes Mixed

Standings as of Oct. 3

Adamson & Henson	W	L
Floyd's Gang	23	12
D. J.'s	23	15
Buckeye Transplants	20	8
Mark IV Lounge	19	9
Hopetills	19	9
Torrie & Rawson	19	9
Countryside Builders	18	17
Doug's Painting	17	11
Federal Screw Outlaws	16	19
U. No's	16	19
Harmon & Cook	15	20
Rushing's Temp. Help	14	21
Bollinger's Sanitation	13	22
Team No. 16	10	18
Ann Arbor Centerless	11	24
Hook Line & Stinkers	7	28

Women, 150 games & over: B. Wisniewski, 157, 175; B. Smith, 177; B. Torrice, 169, 178, 159; D. Cook, 176; R. Dils, 173; S. Ellenwood, 171; M. Vassas, 164, 184, 168; D. Keezer, 158; M. Henson, 152; M. Adamson, 155; M. Scriptor, 157; L. Alexander, 160, 157; L. Behnke, 160, 191.

Men, 450 series: B. Wisniewski, 480; B. Torrice, 504; M. Vassas, 516; L. Behnke, 488.

Men, 175 games: T. Wisniewski, 201; A. Sannes, 234, 192; F. Northrup, 181; J. Torrice, 188; T. Karns, 178; D. Messner, 226; J. Harmon, 178; D. Bolanowski, 176; D. Dils, 201; F. Thiebault, 175; D. Ellenwood, 177, 179; E. Vassas, 200, 211; E. Keezer, 198; R. Morgan, 109; F. Dickinson, 182; T. Rousculp, 195; D. Alexander, 183, 192; G. Popp, 189.

Sunday Swingers

Standings as of Oct. 5

Sidekicks	W	L
Bottoms Up	19	2
Town Clowns	17	4
T & M	17	4
Spit & Suds	14	7
Goof-Ups	13	8
The Innates	12	9
Sour Krauts	11	10
Friday Funny Farm	11	10
Need-N-Luck	11	10
Pin Pals	7	14
Irrepressibles	7	14
C & A	7	14
Pin-Ups	7	14
Pin Problems	5	16
Extrajeros	4	17
Rockin' Pins	3	18
Team No. 11	0	14

Men, over 175: L. Engeler, 200; D. Anderson, 185; D. DuRussell, 180; K. Brown, 183, 207, 211; D. Cumper, 181, 190; T. Helmbolt, 191; M. McAllister, 203; W. Westphal, 185; L. Hawker, 210, 183; J. Quackenbush, 175; P. Case, 178, 183; J. Settle, 190, 181; D. Cook, 183; A. Steinaway, 180.

Men, over 500: D. Anderson, 528; K. Brown, 601; D. Cumper, 514; W. Westphal, 515; L. Hawker, 533; P. Case, 528; J. Settle, 536; D. Cook, 521.

Women, over 150: S. Arnold, 171; C. Timmerman, 156, 152; R. McGibney, 169, 151, 155; D. McAllister, 203, 181; E. Neibauer, 171, 151; T. Hawker, 159; A. Chritz, 159, 150; S. Brown, 154, 177; M. Quackenbush, 172, 154; K. Cook, 184; A. Steinaway, 152; N. Underhill, 163; N. Clark, 170.

Women, over 450: S. Arnold, 453; R. McGibney, 475; D. McAllister, 450; S. Brown, 473; M. Quackenbush, 464.

Tri-City Mixed

Standings as of Oct. 3

Baker & Fletcher	W	L
The Proud American	22	13
Palmer's Union 76	21	14
Portage Hardware	20	15
Smith's Service	19	16
Frealin Craft & Co.	19	16
Real Estate One	19	16
3-D Sales & Service	19	16
Stiver's	19	16
Chelsea Cleaners	19	16
E. P. Smith Pallet Co.	18	17
McEwan & Mock	18	17
Burnett & Sparks	17	18
L & R Restaurant	16	19
Vassas & Fike	16	19</

Gridders of the Week



JIM BOYER (88): Standing 6' tall and weighing in at 185 pounds, senior end and "sometimes guard" Jim Boyer believes he could be playing better ball. "Last Friday (against Brighton) was my bad game. We just weren't ready for them," Jim thinks the team will give a better showing this Friday when they meet South Lyon. When questioned as to why South Lyon might give the Bulldogs some good competition, Boyer answered "they almost beat Milan. Look at that, Milan won, 7-16." And according to Jim, the Milan game will be the "biggie" for the Bulldogs. But then we still have Saline. We can only take them one at a time. Aside from his interest in football, Jim has a budding interest in baseball, he played with the JV team last spring. He has four brothers and sisters, Bonnie, 16; Jeff, 13; Joel, 5; and Heidi, 3. He is the son of Mr. and Mrs. Winston Boyer of 515 Chandler St.

JERRY MILLIKEN (65): Up to his elbow in plaster, Jerry Milliken hopes to get some action in before the 1975 Bulldog season and his high school football career comes to a close in November. Milliken, who starred as middle guard in the Bulldogs' opening game with Tecumseh, has been a spectator since the third quarter of that game when a perhaps overzealous tackle left him with two broken knuckles. The good-natured 5'9" 185-pound player said that the cast comes off this week. He probably will not play, but he will dress—a first in some weeks. Jerry says the most frustrating aspect of the broken knuckles has been watching practice and games. In the spring his plans are to join up with the varsity track team and to avoid injury. The son of Mr. and Mrs. Jerold Milliken, Jerry has one sister, Karen, 16.

Cross Country Team Divides Two Toughies

Hoping to even up their whas and losses next week, Chelsea varsity cross country team now stands at 1-2 in the league and 3-5 over-all.

The Bulldogs lost to the defending champions last Thursday, 22-23. The South Lyon Lions took the Bulldogs and both first and second place for the three-mile run. John Storey took third with a time of 17:12. Other Chelsea times were

6th, Phil Frame, 17:27; 7th, Rick Haller, 17:34; 8th, Dean Thompson, 17:48 and 9th, Bill Rademacher, 18:06.

Tuesday the Bulldogs met Jackson Northwest (reported at the toughest team they would meet all year) and Eaton Rapids.

Coach Clarke said that despite the defeat by Northwest "Chelsea looked good." Northwest scored 23 to the Bulldogs 32.

Against Eaton Rapids, the Bulldogs marked up a 19-point victory, scoring 20 to that team's 39. Phil Frame took first place for the meet breaking the school record with a time of 16:07.

The following Chelsea runners ran their all-time bests: 3rd, John Storey, 16:15; 4th, Morris Johnson, 16:40; 5th, Rick Haller, 16:46; 7th, Bill Rademacher, 17:11; 8th, Scott Beyer, 17:24; 11th, Chris Minic, 17:24; 12th, Mark Bucholz, 17:56 and 13th, Jeff Sweet, 18:04.

Coach Clarke attributed the excellent times to the flat course. "I knew if they ever ran on a flat course they would take off and they did!"

OCTOBER SPECIALS:

LITTLE ROOSTER RESTAURANT

Phone 426-8668

11485 N. Territorial Rd.

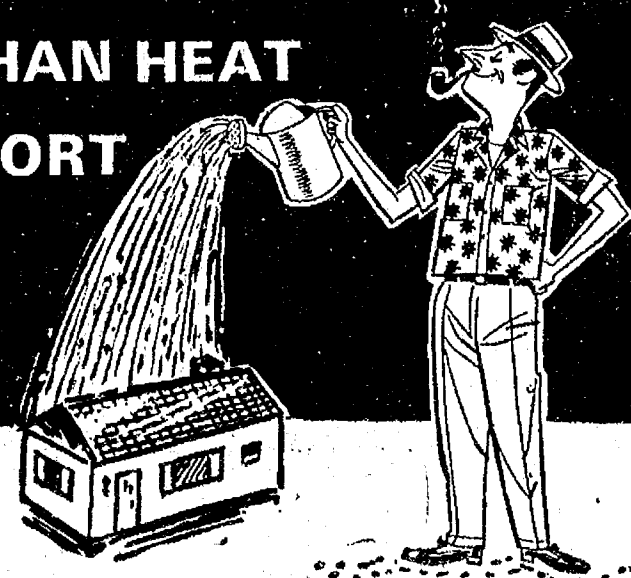
THURSDAY, 5 to 9 p.m. - SPAGHETTI DINNER
ALL YOU CAN EAT - \$2.35 per person

FRIDAY, 5 to 9 p.m. - OCEAN PERCH DINNER
All the Perch You Can Eat - \$2.45 per person

In addition to our regular menu, we are now serving our own
HOME-MADE PIZZAS after 5 p.m.

Open Tues., Wed. & Thurs., 4 to 10 p.m.
Fri., Sat. & Sun., 11 a.m. to 10 p.m. Closed Mondays

**YOU NEED MORE THAN HEAT
FOR WINTER COMFORT
YOU ALSO NEED
HUMIDITY**



Coolerator HUMIDIFIER

\$84⁹⁵

With properly humidified air you feel comfortable with less heat—so you save on fuel. You also feel better, sleep better, awake refreshed. Your home and furnishings don't dry out.

- Automatic humidistat • Water level indicator • 2-Speed operation • Easy to fill, 7.5 gal. reservoir
- Easy to clean • AHAM Certified Evaporative Capacity—8 gallons of water a day • Automatic shut-off

HEYDLAUFF'S

113 N. Main St.

Ph. 475-1221

School Board Briefs

At a regular meeting of the Chelsea School Board Monday, Oct. 6 present were Schafer, Daniels, Tobin, Irwin, Haselschwardt, Hodgson, Supt. Cameron, Business Manager Mills, Principals Lane, Conklin, Wojcik and Benedict. Several guests also attended the meeting.

The minutes of Sept. 8 and Sept. 15 were approved as presented.

The special education contract with the Rackham School in Ypsilanti was approved.

Martin Tobin, Robert Schafer, Tom Balistrere and Supt. Cameron will attend a meeting on Community Education to be held at EMU on Oct. 21.

Jerry Cullimore of Construction Co-ordinators, Inc., reported on the building program.

South—Occupancy this week except cafeteria and kitchen.

North—Kindergarten rooms this week. Remainder of the building on Oct. 20 except cafeteria and kitchen.

High School—Some areas by Oct. 8, remainder Nov. 20.

Beach School—Locker room areas Nov. 19.

Service Building—Nov. 24.

The 1975-76 athletic budget of \$18,300 was approved.

The budget hearing for the 1975-76 operating budget is to be held at 7 p.m., Oct. 30, in the High school cafeteria.

The board approved the purchase of band instruments totaling \$6,100.

The board approved the purchase of 1.5 acres on Ivey Rd. for

\$4,000 for construction of the Building Trades house.

Meeting adjourned at 11:55 p.m.

Still Openings In Children's Rec. Classes

Despite the fact that children's classes offered through the Chelsea Recreation Council began last Saturday, openings for all three classes remain.

Children interested in learning puppet making and sculpture may register through the instructor, Judy Parker at 475-1445. Sculpture classes are offered Saturdays in the high school art room from 10:30 a.m. to noon. Only children 10 years and older may register. Puppet making class will meet from 9 to 10:30. The class is designed for children ages 6 to 8.

Cheerleaders at Chelsea High school have drummed up some enthusiasm for their course in cheerleading. Students in the course will have an opportunity to try out to cheer with the cheerleaders at one of Chelsea's toughest games of the season to be played Oct. 31 with Saline on the home field.

Taught by five varsity cheerleaders, the class meets from 10:30 a.m. to noon for youngsters ages 6 to 9. Youngsters 10 years old and up will meet from 9 to 10:30 a.m.

Holly Porter, recreation director, said that persons interested in registering may also call her at 475-9315. Fee for each course is \$3.



QUARTERBACK RANDY GUENTHER (far left), looks for a hole after a broken play, while teammate Tony Roberts (33) tries to block the Brighton quarterback, Bob Schmidt. The Bulldogs won Friday night's contest, 26-20.

Golf Team Nosed Out in Dexter Tournament

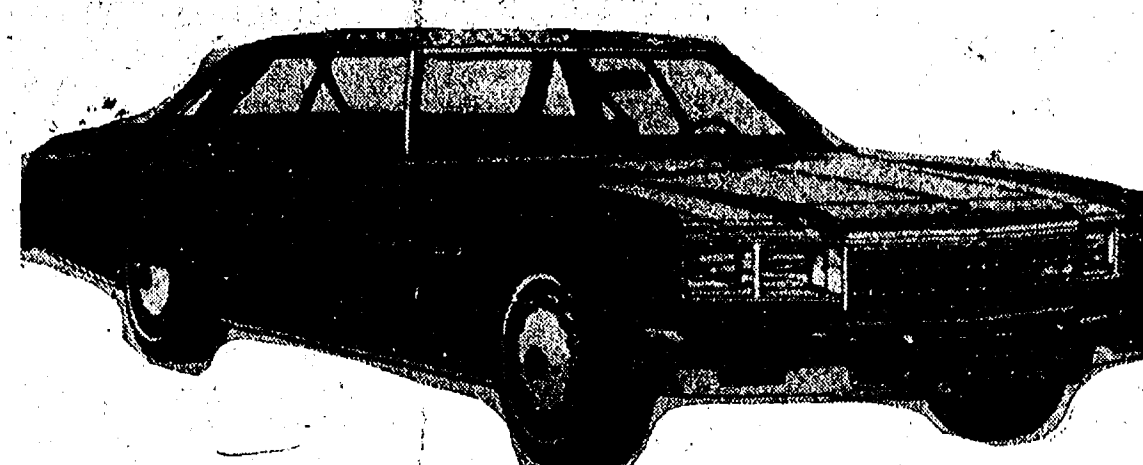
Chelsea's varsity golfers now stand at 10-4 in the league and 12-4 over-all after a week of golf matches with St. Thomas, Novi, Lincoln, Saline, Dexter teams that participated in the Dexter Invitational.

Wednesday, Oct. 1 the golfers met St. Thomas, defeating them 159-189. Their winning strokes continued through Thursday when they played a dual match with Novi and Lincoln. The scores were 167-182, respectively.

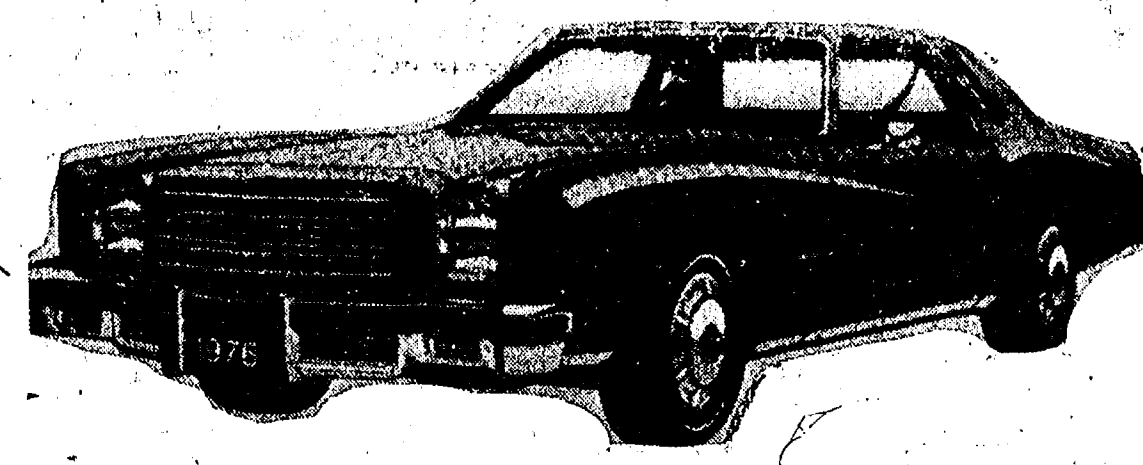
Unfortunately the Bulldogs were upset Friday when they played in the Dexter Invitational. Chelsea finished sixth with Milan golfers taking a first for the tourney.

Monday, the Bulldogs met both Saline and Dexter for a win and a loss. They managed to defeat Saline by one stroke, 187-188, but could not overcome Dexter golfers losing, 187-178.

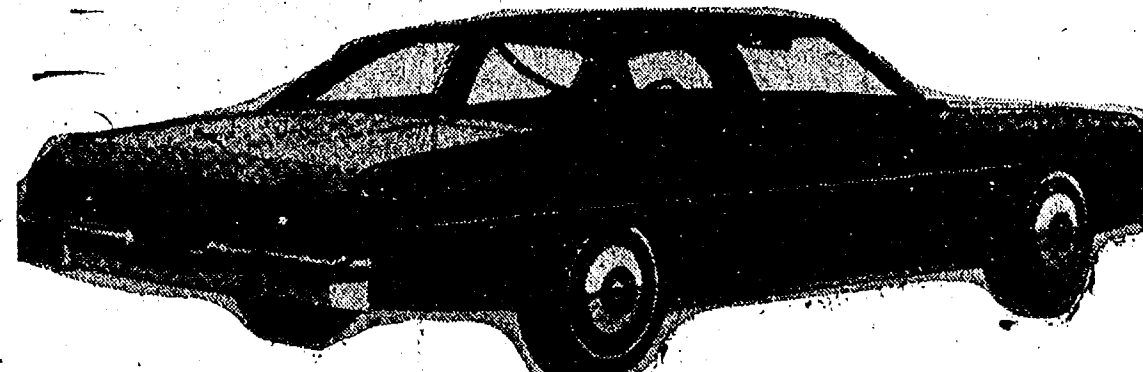
NOW SHOWING THE ECONOMICAL 1976 CHEVROLET CARS & TRUCKS



CAPRICE CLASSIC SPORT SEDAN



MONTE CARLO COUPE



IMPALA CUSTOM COUPE



ELDORADO FLEETSIDE PICKUP

**For improved gas mileage at low prices
see the '76 Chevrolets at the
"INFLATION FIGHTERS"**

LLOYD BRIDGES

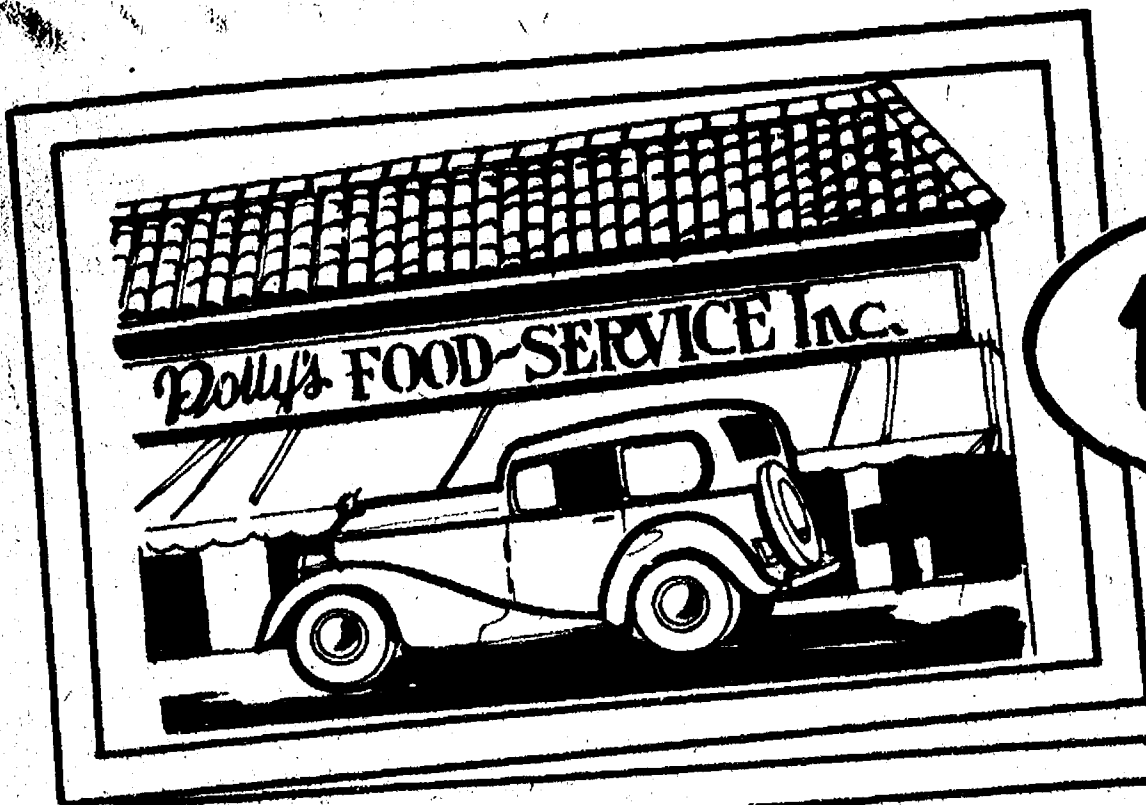
CHEVROLET TRUCKS

"For Quality, Service and Price"

SALES HOURS:

Monday 8 a.m. to 8:30 p.m.
Tuesday thru Friday 8 a.m. to 6:00 p.m.
Saturday 8 a.m. to 5:00 p.m.

475-1373
CHELSEA



1934

**SIX
CONVENIENT
LOCATIONS**
201 PARK AVENUE, V.L.
1821 SPRING ARBOR RD.
115 W. PROSPECT
960 N. WEST AVE.
1809 E. MICHIGAN AVE.
1101 M-52, CHELSEA

SAVE UP TO \$14*
WITH THESE BONUS
COUPONS & POLLY'S
IN-STORE COUPONS



GOVERNMENT INSPECTED
WHOLE

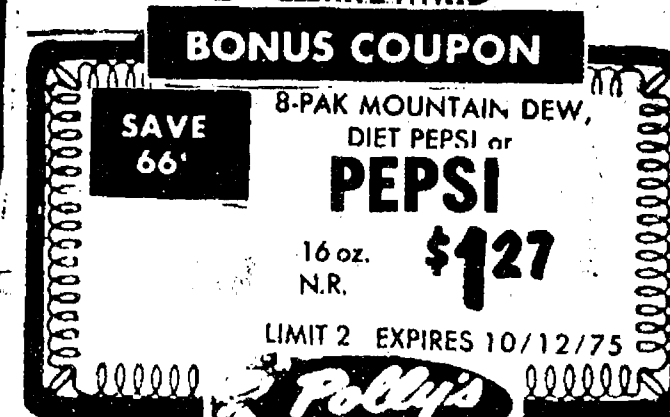
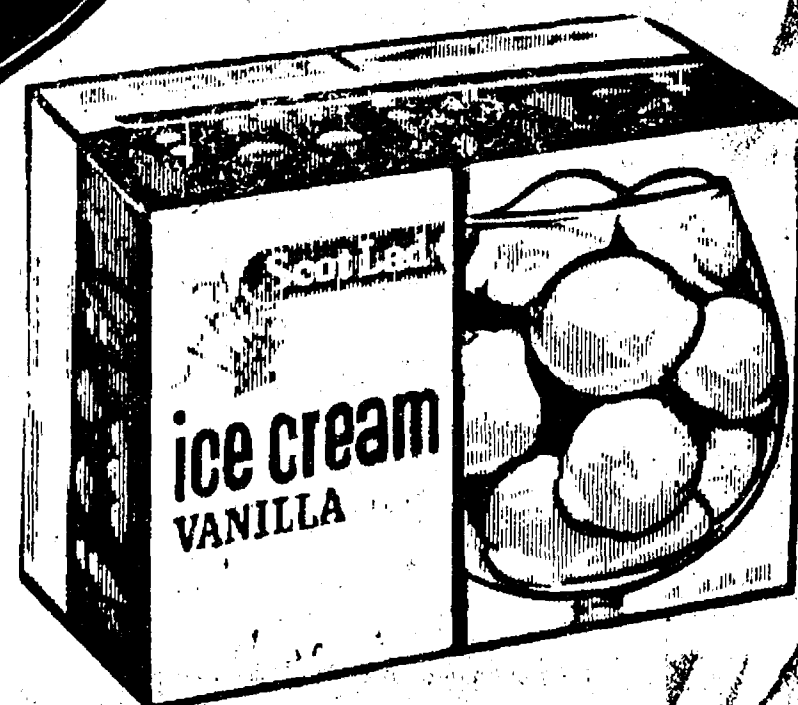
FRYERS

49¢
LB.

Polly's

41st

**ANNIVERSARY
SALE!!**



**SAVE 40¢
W/IN-STORE
COUPON**
POLLY'S QUALITY
WHITE BREAD
King-
Size **399¢**
24-oz.
Loaves

**SAVE 20¢
W/IN-STORE
COUPON**
POLLY'S GRADE A
LARGE EGGS
Dozen **59¢**

1975

Polly's

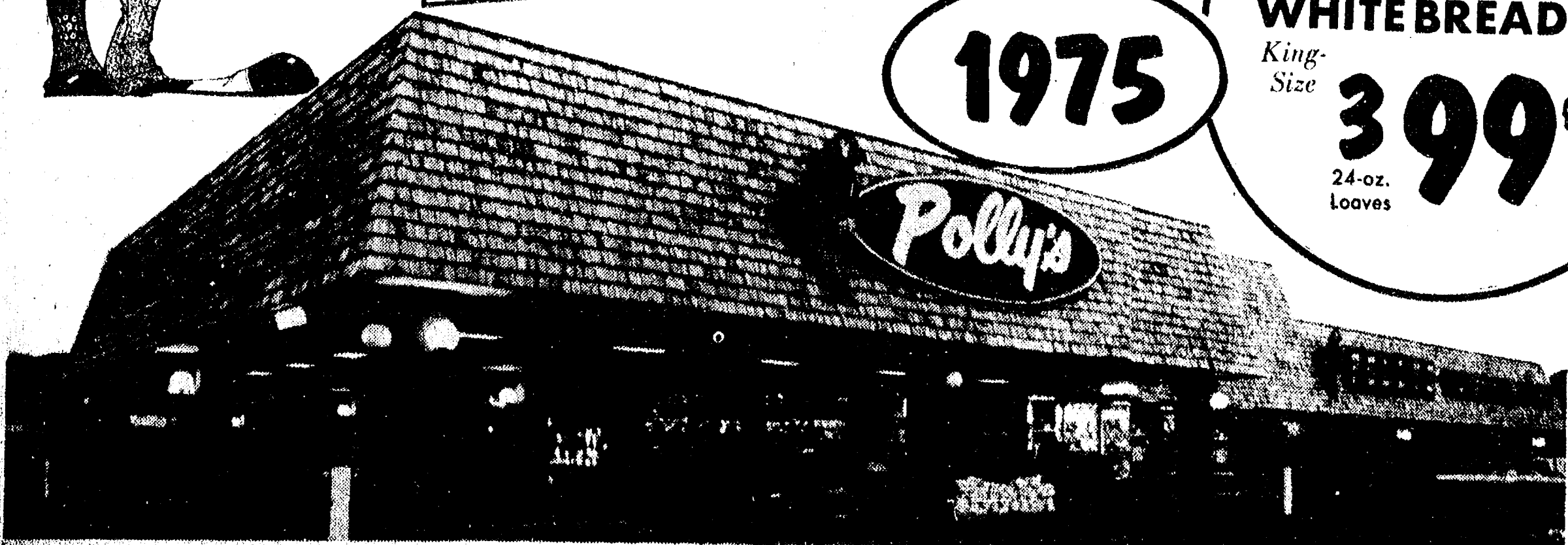
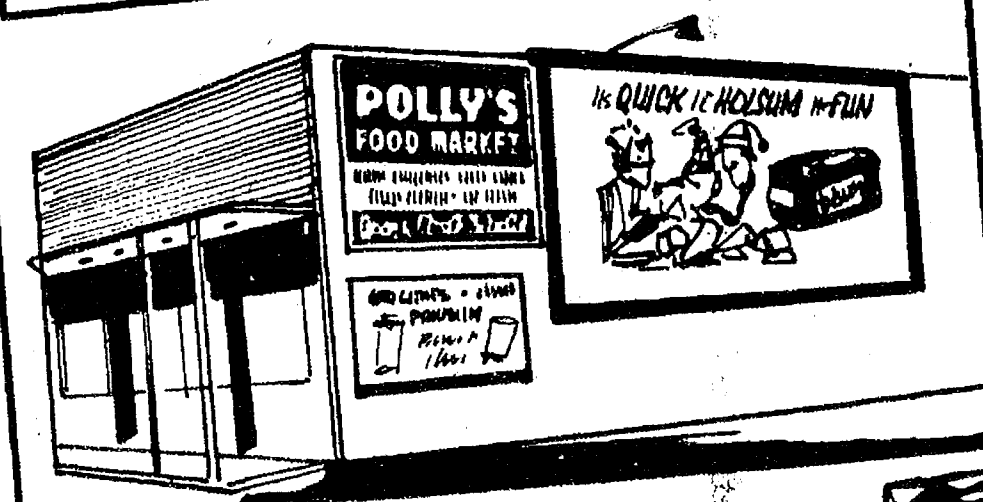
**ANNIVERSARY
CAKE CUTTING
SATURDAY, OCTOBER 11
AT 11 A.M.
OVER \$600.00 WORTH
OF PRIZES IN
CAKE CAPSULES**

**326 WINNERS
WITH PRIZES
TOTALING
\$3750.00
DURING OUR
TWO WEEK SALE**

**72 FOOD
BASKETS WORTH
\$30.00 TO BE
GIVEN AWAY
OCTOBER 11, 1975**

**COME
REGISTER
&
JOIN THE
FUN**

**GRAND
PRIZE
DRAWING
OCTOBER 11, 1975
AT POLLY'S
ON SPRING
ARBOR RD.**



41st

ANNIVERSARY SALE

2ND BIG WEEK OF

GRADE A WHOLE

Fryers

49[¢]
LB.

WE RESERVE
THE RIGHT
TO LIMIT
QUANTITIES



GOVERNMENT INSPECTED WHOLE
CUT-UP FRYERS 55[¢] lb.
GOVERNMENT INSPECTED QUARTERED
CHICKEN LEGS 69[¢] lb.
GOVERNMENT INSPECTED QUARTERED
CHICKEN BREAST ... 75[¢] lb.
GOVERNMENT INSPECTED
CHICKEN LIVERS 79[¢] lb.

POLLY'S PRIDE QUALITY CUBED
PORK CUTLETS 1⁶⁹
POLLY'S PRIDE QUALITY PORK
CITY CHICKEN 1⁶⁹

POLLY'S PRIDE QUALITY CENTER CUT
RIB PORK CHOPS 1⁶⁹ lb.

POLLY'S PRIDE QUALITY CENTER CUT
LOIN PORK CHOPS 1⁷⁹ lb.



QUARTER PORK LOIN MIXED Ends & Centers
PORK CHOPS 1⁴⁹ lb.
POLLY'S PRIDE QUALITY RIB-HALF
PORK ROAST 1⁵⁹ lb.
POLLY'S PRIDE QUALITY LOIN-HALF
PORK ROAST 1⁶⁹ lb.

ALL ABOUT FOOD



F.A. KENNEDY

Four out of ten shoppers usually make price comparisons before they go shopping, according to a survey by the Bureau of Advertising, American Newspaper Publishers Association.

Most information on prices is obtained through advertising, but instore promotion and personal observation was cited by twenty percent of respondents as a source of price information.

Why price comparisons? Well, these are the times that try men's wallets. An average American worker spends two hours and 39 minutes of his 8-hour work day earning money to pay Federal, state and local taxes, says the National Live Stock and Meat Board.

Earning enough to buy a day's supply of food and beverage however requires only 58 minutes of work, while earning your clothing takes 25 minutes; recreation, 18 minutes; and housing, one hour. The remaining one hour and 37 minutes pays for all other categories.

Several factors influence how much the consumer pays at the supermarket, including weather, imports, cost of harvesting, government price supports, higher interest rates to farmers and even subdivisions, which are taking farm land.

Food prices have risen like other prices. And they are subject to the same inflationary pressures as everything else in our economy. There cannot be continued wage increases, higher costs of transportation, higher taxes, and higher costs of everything else in our economy without it having an effect on food prices.

On the brighter side...today's supermarket grows bigger and better every day. Of course, what matters most to you isn't the size of the store, but the size of the values. And that's where we shine at Polly's.

POLLY'S PRIDE QUALITY
GROUND BEEF CHUCK 3 lbs. or more 79[¢] lb.
POLLY'S PRIDE QUALITY
CUBE STEAK lb. 1⁵⁹
POLLY'S PRIDE QUALITY ROUND OF
RUMP ROAST lb. 1⁴⁹
POLLY'S PRIDE QUALITY
BONELESS BEEF STEW lb. 1³⁹
POLLY'S PRIDE QUALITY
BEEF SHORT RIBS lb. 79[¢]
ECKRICH REGULAR or
BEEF FUN FRANKS lb. 1⁰⁹
ECKRICH
SLICED BOLOGNA lb. 1³⁹
ECKRICH
SMORGAS PAK lb. 1⁴⁹
POLLY'S PRIDE QUALITY BULK
BREAKFAST SAUSAGE lb. 99[¢]
HICKORY SMOKED
HAM SLICE lb. 1⁸⁹
HICKORY SMOKED
SEASONING HAM lb. 1³⁹
SWIFT PREMIUM
SLICED BEEF LIVER lb. 79[¢]
POLLY'S PRIDE QUALITY
CHINESE SPARE RIBS lb. 1⁶⁹
FARMER PEET CHUNK
BRAUNSWEIGER lb. 69[¢]
FARMER PEET CHUNK
BOLOGNA lb. 89[¢]
BOB EVANS PORK
ROLL SAUSAGE lb. 1⁶⁹

WIN A YEARS SUPPLY
of **ECKRICH HOT DOGS!**
DRAWING OCTOBER 11TH, 1975

DELI

PRODUCE

WASHINGTON
GOLDEN or RED DELICIOUS APPLES 3 lbs. For \$1

CALIFORNIA
HEAD LETTUCE 3 Heads \$1 For
GARDEN FRESH
GREEN PEPPERS 3 for 39[¢]
GARDEN FRESH
CUCUMBERS 3 for 39[¢]
FRESH
CRANBERRIES lb. 39[¢]
FRESH
GREEN HUBBARD SQUASH lb. 8[¢]

NEW CROP FLORIDA 40 SIZE
PINK or WHITE GRAPEFRUIT 5 for 77[¢]

SUNMAID
SWEETREAT
RAISINS
14 1/2 oz. pgs. 59[¢]

ECKRICH
SLICING BOLOGNA 1²⁹ lb.

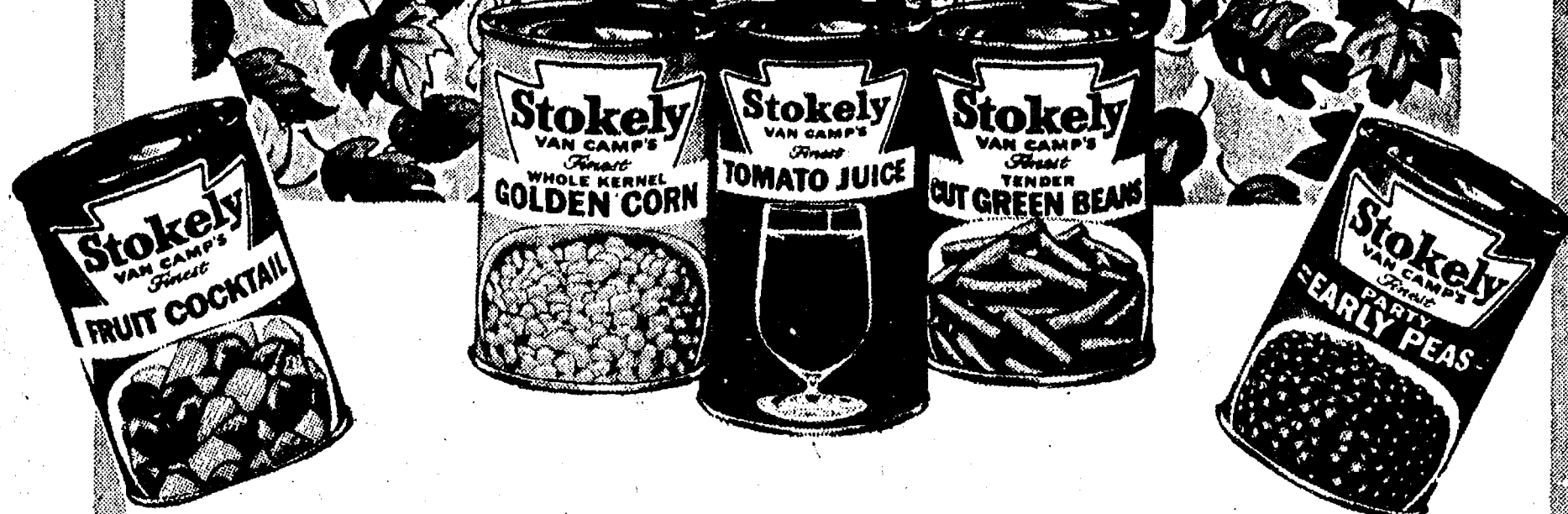
FARMER PEET BULK
SLICED BACON ... lb. 1⁶⁹
HERRUD
COOKED HAM ... lb. 2⁶⁹
POLLY'S HOMESTYLE
SANDWICH SPREAD lb. 79[¢]
FRESH HOMESTYLE
POTATO SALAD ... lb. 69[¢]

KENT RING
BOLOGNA ... lb. 99[¢]
KENT
METTWEURST lb. 1²⁹
KENT
POLISH SAUSAGE lb. 1²⁹
KENT ROASTED
SMOKED SAUSAGE ... lb. 1²⁹

SAVINGS...AT POLLYS

41st
ANNIVERSARY
SALE

Fall Festival of savings



SAVE 35% Stokely SLICED CARROTS 5 16-oz. cans \$1.00	SAVE 16% Stokely CUT GREEN BEANS 4 16-oz. cans \$1.00
SAVE 17% Stokely TOMATO JUICE 2 46-oz. cans 89¢	SAVE 16% Stokely FRENCH GREEN BEANS 4 16-oz. cans \$1.00
SAVE 26% Stokely WHOLE KERNEL CORN 3 16-oz. cans 79¢	SAVE 40% Stokely CUT WAX BEANS 4 16-oz. cans \$1.00
SAVE 26% Stokely CREAM STYLE CORN 3 16-oz. cans 79¢	SAVE 16% Stokely SHELL BEANS 4 16-oz. cans \$1.00
SAVE 32% Stokely VACUUM PAK CORN 3 12-oz. cans 79¢	SAVE 16% Stokely Dark Red KIDNEY BEANS 4 16-oz. cans \$1.00
SAVE 17% Stokely PARTY PEAS 3 16-oz. cans \$1.00	SAVE 24% Stokely BAVARIAN KRAUT 4 16-oz. cans \$1.00
SAVE 11% Stokely EARLY JUNE PEAS 3 16-oz. cans \$1.00	SAVE 25% Stokely Small WHOLE POTATOES 5 16-oz. cans \$1.00

SAVE 35%

PILLSBURY FLOUR

10-lb. **\$1.28**

Pillsbury's BEST XXX FLOUR
idea recipes inside!!!

SAVE 26% W/IN-STORE COUPON

PUREMAID ONION CHIP DIP
16-oz. **29¢**

SAVE 30%

BANQUET BUFFET SUPPERS

2-lb. **\$1.19**

Banquet Buffet Dinners

SAVE 28%

SCOT LAD APPLESAUCE

50-oz. **77¢**

Banquet Buffet Supper
giblet gravy & sliced turkey

SAVE-A-LOT PHARMACY
Good Only at Polly's on W. Ave. & Spring Arbor

PALS CHEWABLE VITAMINS
60 ct. **\$1.47**
W/IN-STORE COUPON

SUDAFED SYRUP
4-oz. **89¢**
W/IN-STORE COUPON

CEPACOL THROAT LOZENGES
24-ct. **49¢**
W/IN-STORE COUPON

SAVE 18% W/IN-STORE COUPON

KRAFT MIRACLE WHIP
Salad Dressing

32-oz. **79¢**

SAVE 60%...6-Pak VERNORS GINGERALE 12-oz. cans 89¢
SAVE 16%...5 Varieties Kraft JAMS or JELLIES 18-oz. 59¢
SAVE 10%...Kraft MACARONI DINNER 14-oz. 57¢
SAVE 41%...NEW FAMILY SIZE CASCADE 65-oz. \$1.38
SAVE 12% BANQUET FROZEN FRUIT PIES 8-lb. 59¢
SAVE 48%...SEALTEST LIGHT 'N LIVELY YOGURT 4 8-oz. \$1

CHECK & COMPARE...POLLY'S SAVES YOU MORE ON YOUR TOTAL FOOD BILL!

Cheerios 10 1/2 oz. 63¢	Golden Griddle Pancake Syrup 24 oz. 1.09	Scott Lad Trash Can Liners 10 ct. 95¢
Wheaties 18 oz. 85¢	Hormel Chili with Beans 24 oz. 89¢	Swift's Prem Luncheon Meat 12 oz. 89¢
Morton Ex Course Rock Salt 60 lb. 1.89	Van Camp Pork 'n Beans 29 oz. 53¢	Ragu Spaghetti Sauce 32 oz. 1.15
Pillsbury Pancake Mix 2 lb. 76¢	Hunts Tomato Paste 6 oz. 25¢	Del Monte Stewed Tomatoes 16 oz. 39¢
Pillsbury Cake Mixes 19 oz. 59¢	Hungry Jack Instant Potatoes 2 lb. 1.49	Domino Powdered Sugar 1 lb. 39¢
Scott Lad Salad Oil 24 oz. 89¢	V-8 Vegetable Juice Cocktail 46 oz. 69¢	Camay Complexion Bars reg. 21¢
Salada Tea Bags 100 ct. 1.49	Shasta Pop Diet & Reg. 12 oz. can 16¢	Derby Tamales 14 oz. 59¢
Pet Condensed Milk 16 oz. 29¢	Musselman's Applesauce 34 oz. 69¢	Formula 409 22 oz. 95¢

MOM MOM LOVE THE SMELL OF THAT POLLY'S ALPINE BAKEHAUS FRESH BREAD & SWEET GOODS...BAKED FRESH DAILY!



Fresh DINNER ROLLS Doz. 59¢	Fresh PEANUT BUTTER COOKIES Doz. 79¢	Fresh PECAN KRISPIES 10¢ ea.	CAKES FOR ALL OCCASIONS
--	---	--	--------------------------------



BEVERAGE SERVER W/COVER

This Weeks Featured Item
SAVE \$3.00
WITH IN-STORE COUPON



\$12.99

save \$2
when you buy
with \$100 Refund

save \$1.40 4 pack

HEALTH & BEAUTY AIDS

ANACIN

FAST PAIN RELIEF

100 Tablets
\$1.91 Value
\$1.29

ON 60's + 30 TABLETS FREE SIZE

FLINTSTONES
MULTIVITAMIN SUPPLEMENT
REGULAR OR WITH IRON

SAVE 52%

\$1.39
WITH IN-STORE COUPON

BAYER CHILDREN'S COLD TABLETS

30 Tablets **49¢** 85¢ Value

GERITOL TABLETS
47's - \$3.49 Value **\$2.39**

SOMINEX TABLETS
32's - \$2.49 Value **\$1.69**

Clairol
Sunshine Harvest Shampoo
8 oz. - \$1.85 Value **\$1.19**

Summer's Eve Disposable Douche
Regular or Herbal
Single Pack 59¢ Value **39¢**
Twin Pack **69¢**
\$1.15 Value

LOOK FOR THIS Gillette WORLD-SERIES SWEEPSTAKES DISPLAY FEATURING...

TRAC II 9's
\$2.39 Value **\$1.79**

... PLUS ...
We Redeem all Gillette in-store Price off coupons

AQUA VELVA AFTER SHAVE
4 oz. **99¢** \$1.39 Value

BREACOL
COUGH MEDICATION
3 ounce **99¢** \$1.59 Value

JOHNSON'S
BABY POWDER **\$1.29**
14 oz. - \$1.75 Value
BABY SHAMPOO **\$1.19**
7 oz. - \$1.59 Value

BIRDS EYE FROZEN VEGETABLES 3 10-oz. 89¢	JENO ASSORTED SNACK TRAYS 6-oz. 89¢	SCOT FARM BISCUITS BUTTER MILK BAKING POWDER 4 8-oz. 49¢	BOOTH OCEAN PERCH FILLETS 16 oz. 99¢ W/IN-STORE COUPON
---	--	---	--

Thank You

FOR SHOPPING AT...



WHERE WE ARE
HAPPY TO.....

save YOU MONEY!